



Grupo Dinamizador
Rede Portuguesa de

turismo
industrial

industrial heritage guide

porto
and north

P TOURISM
NORTE
PORTUGAL
ORIGINS
AND ORIGINAL

INDEX

INTRODUCTION

MUNICIPALITY OF AROUCA

- Casa do Pão de Ló de Arouca 'A. Teixeira Pinto - Tiago & Isilda Brandão, Lda'
- Fábrica & Loja dos Doces Conventuais de Arouca

MUNICIPALITY OF BRAGA

- Bom Jesus de Braga Funicular

MUNICIPALITY OF CABECEIRAS DE BASTO

- Casa da Lã
- Arco de Baúlhe Railway Museum

MUNICIPALITY OF ESPOSENDE

- Junco Reed Interpretation Center
- Sargaço Museum
- Abelheira Mills Park

MUNICIPALITY OF FELGUEIRAS

- Atlanta
- Casa do Risco
- Criações Virgínia
- Fábrica do Pão de Ló de Margaride
- Felmini
- Hearts
- Jefar
- Leira Calçados
- Nobrand
- Quinta da Lixa
- Quinta da Palmeirinha
- Quinta de Maderne
- Rosa Sousa
- Terras de Felgueiras – Caves Felgueiras, CRL

MUNICIPALITY OF FREIXO DE ESPADA À CINTA

- Silk and Territory Museum
- The Silk from Freixo de Espada à Cinta

MUNICIPALITY OF GONDOMAR

- Gondomar Municipal Filigree Museum
- Route of the Filigree - ARPA
- Route of the Filigree - AC Filigranas
- Route of the Filigree - J. Monteiro de Sousa e Filhos Lda
- Route of the Filigree - Classic Silver
- Route of the Filigree - F. Ribeiro Lda
- Route of the Filigree - Só Ouro
- Route of the Filigree - CINDOR
- S. Pedro da Cova Mining Museum
- TOPÁZIO - Industrial Heritage of Silversmithing

MUNICIPALITY OF GUIMARÃES

- BELO INOX
- COELIMA
- FILASA
- JORDÃO
- LAMEIRINHO
- LASA

MUNICIPALITY OF MACEDO DE CAVALEIROS

- Murços Mines
- Real Filatório de Chacim | Macedo de Cavaleiros

MUNICIPALITY OF MARCO DE CANAVESES

- Duriense
- Stone Museum

MUNICIPALITY OF MATOSINHOS

- Pinhais Museu Factory
- Portugal Norte
- Ramirez
- Super Book - Casa da Cerveja
- TITAN

MUNICIPALITY OF MELGAÇO

- Queijaria Prados de Melgaço
- We Cherish Happy Goats

MUNICIPALITY OF OLIVEIRA DE AZEMÉIS

- Aspöck
- Atelier Paulo Neves
- Berço Vidreiro
- Colmol
- Fábrica Novarroz – Produtos Alimentares, S.A.
- Ferpinta
- Luis Onofre | Luxury Portuguese Designer
- Shoes & Accessories
- Molinological Theme Park
- Polisport
- Schmidt Light Metal Group
- Silamos
- Simoldes
- Vitorino Silva Coelho, Lda.

MUNICIPALITY OF PAREDES

- FENABEL
- LASKASAS
- MÓVEIS FIALHO
- CFPIMM - Centro de Formação profissional das indústrias da Madeira e do Mobiliário
- Wewwod – Portuguese Joinery

MUNICIPALITY OF PONTE DE LIMA

- Portuguese Toy Museum

MUNICIPALITY OF PORTO

- Alcino Silversmith Since 1902
- Claus Porto
- Museum of the Higher Institute of Engineering of Porto
- Museum of Transport and Communications
- Porto Customs Building
- NORTADA Craft Beer
- Peninsular – Papelaria & Artes Gráficas

MUNICIPALITY OF S. MARIA DA FEIRA

- Loios Convent Museum
- – An Adventure in Cork
- Santa Maria de Lamas Museum
- Terras de Santa Maria Paper Museum

MUNICIPALITY OF SANTO TIRSO

- Interpretive Centre of the Santo Thyrso Factory
- Singeverga Liqueur - production unit

MUNICIPALITY OF SÃO JOÃO DA MADEIRA

- Design and Footwear Academy
- Belcinto
- Bulhosas (Irmãos), SA
- CEI – Companhia Equipamentos Industriais
- Portuguese Footwear Technological Centre (CTCP)
- Cortadoria
- ERT – Textil Portugal
- Faurecia
- FEPSA
- Flexitex
- Heliotextil
- Mariano Shoes
- Hat Museum
- Footwear Museum
- Oliva Creative Factory
- Sleep8
- Oliva Tower
- Viarco

MUNICIPALITY OF VIANA DO CASTELO

- Azenha da Almerinda
- Moinho de Maré - Azenhas de D. Prior
- Gil Eannes Hospital Ship - Museum Ship
- Route of Ceramics - Telheiros Kilns

MUNICIPALITY OF VILA POUCA DE AGUIAR

- Mining Interpretive Centre of Jales
- Tresminas Mining Complex

Grupo Dinamizador
Rede Portuguesa de

turismo
industrial

INTRODUCTION

The Industrial Heritage Guide of Porto and North of Portugal provides an important framework for understanding both the aspects of Industrial Heritage and Living Industry, highlighting the relevance of converging, cross-referencing and systematically organising tourist information in a compelling and functional format in which visual and informative interfaces coexist harmoniously, contributing to the effective promotion of the region.

From Living Industry to Industrial Heritage and Archaeology, and to Science and Technology, we invite visitors to immerse themselves in authentic and original Factory Tours that foster greater interaction with communities and aspects of our region's identity: understanding the manufacturing process (ancestral or contemporary) of a particular product, grasping how machinery operates, experiencing the final product, interacting with the artisans who create these products, and participating in authentic and unique production processes are examples of distinctive and enjoyable Factory Tours offered throughout this guide.

These appealing projects invite visitors to become increasingly active participants who engage with the heritage and memory, transforming it into a genuinely meaningful cultural and tourism offering associated with Industrial Heritage.

We present a set of projects that invite visitors to create their own travel itineraries based on their motivations. Throughout the guide, we provide hyperlinks that direct you to each project's website to ensure you find information with a higher level of detail and always up-to-date.

An irresistible invitation for a renewed memory of sentimental journeys under the banner of Industrial Heritage, revealing the indelible cultural aspect of Porto and North of Portugal.

Porto and North of Portugal have that aesthetic charm and pleasant place where you always want to return!



Grupo Dinamizador
Rede Portuguesa de

**turismo
industrial**



AROUCA

Among the mountains, Arouca hides treasures of the history of planet Earth and Humanity. In this territory, classified as a UNESCO Global Geopark, we discover Earth's secrets in the Mining Complexes of Regoufe and Rio de Frades, among mine entrances and through their industrial heritage. Memories of World War II times when men ventured in search of 'black gold' - tungsten. While in the past Humanity ventured into mineral resource exploration, the appreciation of Natural and Cultural Heritage marks the new era of this geopark, with particular emphasis on living industry and new flavours:

Sweet Pumpkin or Chestnut Cakes, baked at Boroas&Companhia, enhancing and transforming the region's products; Pinguça Liqueurs, produced at the legendary Destilaria Eduardo de Noronha Dias; or Conventual and Regional Confectionery, from Casa dos Doces Conventuais, COME Sabores de Portugal, and/or A. Teixeira Pinto. The privileged location of this territory combines with science, marking the Costa da Castanheira Panoramic View geosite with the impressive tower of the Arouca Weather Radar, dedicated to meteorological surveillance and monitoring, which you can explore from its Panoramic Floor.

www.aroucageopark.pt

Arouca Sponge Cake

Adding a touch of elegance
to your table since 1840

Casa A. Teixeira Pinto, owned by Tiago and Isilda Brandão, preserves a heritage that includes the secret and art of preparing the finest and most ancient regional confectioneries.

1840 is the year that marks the beginning of this icon of Arouca's regional gastronomy, the renowned sponge cake.

The recipe was created within the Teixeira Pinto family, at a time when favours were repaid with kindness. Doctors, Abbots, Judges and Bishops were gifted with the delicious cake, created by a 'godmother', as a token of gratitude. Angelina was her name. 'Angelinha' to all those who loved her.

Being an important figure in the history of Sponge Cake, her memory is cherished with fondness and respect. She is represented in the logo, and her recipe is still kept a secret to this day.

This secret arises from the skill of handling the creamy dough without thinking of using yeast or additives/preservatives. The dough grows thanks to the love and dedication put into each step of the process.

The same sweet treat that expressed gratitude for favours soon became a Christmas and Easter favourite, gracing the table when cheerful guests gather.

So, this bakery inherited the treasure, the genuine recipe for each confectionery from the region. Come and learn about the challenge of staying true to customs and traditions in these times of industrial evolution.

INFORMATION ABOUT VISITS

Location:

Av. 25 de Abril, S/n Cimo do Burgo,
4540-204 Arouca

Booking:

Required, at least 5 days
in advance (subject to availability)

Booking contacts:

Casa do Pão de Ló de Arouca
'A. Teixeira Pinto - Tiago & Isilda
Brandão, Lda'
Tel.: (+351) 256 944 246 / 918 662 231
Email: paodelodearouca@sapo.pt

Visiting days:

Monday to Friday
(Public Holidays and Vacations on
request)

Number of visitors: Min. 15 - Max. 50

Languages: Portuguese and French

Duration of the visit: approx. 60 minutes

Shop: Yes

For more information, please visit:

www.paodelodearouca.pt



AROUCA

Adding a touch of elegance to your table since 1840

Fábrica & Loja dos Doces Conventuais de Arouca

Alexandre Herculano wrote about Arouca: 'We turn the hill, and the descent to the Arouca valley begins. The slope and the valley equal Sintra in beauty and surpass it in vastness.' This vast territory encompasses an inseparable part of Arouca's culture and history, its gastronomy, particularly its Conventual Confectionery. The Monastery and its experiences continue to leave an indelible mark on Arouca's culture and pride.

Fábrica & Loja dos Doces Conventuais de Arouca, run by Jorge Bastos, keeps the legacy passed down to his family by the last inhabitants of the Monastery alive, and aims to showcase this ancestral know-how through a comprehensive tour of the production area. Come and visit us, put on your uniform and 'get your hands dirty' to experience the secret we keep here.

INFORMATION ABOUT VISITS

Location:
Av. Reinaldo Noronha, 12
4540-105 Arouca

Booking:
Required, at least 5 days
in advance (subject to availability)

Booking contacts:
Tel.: +351 915 469 954
Email: jorgebastos@conventuais.pt

Visiting days:
Monday to Friday

Number of visitors: 20
Minimum age: 4+
Languages: Portuguese and French
Duration of the visit: 60 minutes
Shop: Yes

For more information, please visit:
www.conventuais.pt

AROUCA



The monastery's heritage...
In a family's story!
Get ready to experience the secret!





Grupo Dinamizador
Rede Portuguesa de

**turismo
industrial**



BRAGA

With over two thousand years of history, Braga is the oldest Portuguese city and one of the oldest Christian cities in the world. Integrated in the sphere of cultural tourism, industrial heritage is closely related to the identity and memory of a people. Braga's memory and identity are also linked to its Roman past. The first steam engine was invented in the Roman Empire, reportedly by Hero of Alexandria, in the 1st century, specifically in Egypt. Although there are no preserved traces of this invention, in Braga you may find other testimonies of technological innovations introduced by the Romans.

Indeed, Braga's long history is felt in its sites and monuments. Those who visit Braga have the opportunity to enjoy a diverse cultural and tourist programme, following a documented path from prehistory to modern times and experiencing the authentic culture of Minho, engraved in its rich heritage, ethnographic groups, festivals, fairs, and pilgrimages, as well as its craftsmanship. A young, cosmopolitan and colourful city, Braga confidently displays a wide range of successful and prosperous settings, extending its protective and entrepreneurial arms to vital areas such as culture, commerce, industry and services.

www.visitbraga.travel

Bom Jesus Funicular

There are three ways to reach the sanctuary: the road, the staircase (a symbol of ascension and transcendence towards the divine, the sacred route of the Way of the Cross), and the funicular. On the picturesque hill, where the painful steps of the Passion are ordered in the poem of Christ's sacrifice, stands the famous Bom Jesus Funicular, which ascends at a height of one hundred and sixteen metres along a sloping track of two hundred and sixty-seven metres. Operated by Confraria do Bom Jesus do Monte, it connects the lower part of the hill to the Sanctuary, next to the equestrian statue of St. Longinus. Being the first funicular built on the Iberian Peninsula, it is currently the oldest in the world still in service using the water counterbalance system.

This initiative was due to one of its most important benefactors, entrepreneur Manuel Joaquim Gomes, a businessman from Braga, a man who in the 19th century best understood what true progress was. The aim was to create an easier way to access the Sanctuary, avoiding the steep climb on foot. The project was designed by Swiss engineer Nikolaus Riggenbach, and the construction began in March 1880 with the technical collaboration of the Portuguese engineer of French descent Raul Mesnier du Ponsard, who supervised the work on site. It was inaugurated on 25 March 1882, and is now classified as a UNESCO World Heritage site, serving as an icon of 19th-century Portuguese engineering.

INFORMATION ABOUT VISITS

Location:
Bom Jesus do Monte
Nogueiró e Tenões - Braga

Booking:
Group bookings only

Booking contacts:
Confraria do Bom Jesus do Monte
Tel.: +351 253 676 636
Email: geral@bomjesus.pt

Visiting days:
Every day
Summer from 08.55 am to 7.55 pm
Winter from 08.55 am to 12.55 pm
and from 13.55 pm to 5.55 pm

Number of visitors:
Maximum - 35 per trip
Duration of the visit: 2.5 - 4 min.,
depending on the number of passengers
Shop: Yes (Casa das Estampas
- next to the Basilica)

For more information, please visit:
www.bomjesus.pt
www.visitbraga.travel



BRAGA

In Braga, experience the Magic of Movement



Grupo Dinamizador
Rede Portuguesa de

**turismo
industrial**



CABECEIRAS de BASTO

In the north of Portugal, district of Braga, in a territory that embraces the traditions of Minho and Trás-os-Montes, you'll find Cabeceiras de Basto, a municipality filled with potential, capable of providing its residents and visitors with a fusion of unique and enjoyable Factory Tours!

This is a municipality that preserves rural experiences with a rich natural and cultural heritage. A wealth of heritage that the Municipality of Cabeceiras de Basto is endeavouring to preserve, bringing together the testimonies of the past in a collective memory to be shared and enjoyed.

Cultural diversity bears witness to the life of this community, and naturally, the Industrial Heritage has its own identity space, safeguarded and preserved, constituting a value-adding factor of the territory.

Visit the Arco de Baúlhe Railway Museum and travel back in time to the railway heritage of the 19th and early 20th centuries.

Visit Casa da Lã, in Bucos, where you can observe and try your hand at the traditional craft of wool processing.

This tour of the municipality's industrial heritage can be complemented with visits to other cultural facilities, places showcasing traditions and customs, religious art, and sports activities.

You can also admire the lush green nature that surrounds the intense colours of the mountains, tinged by the abundant rivers and streams, and savour the delicious cuisine of this region.

Explore the Industrial Heritage and let yourself be enchanted on this journey through Cabeceiras de Basto!

www.visitcabeceiras.pt

Casa da Lã

On the edge of the Cabreira mountain, in the village of Bucos, municipality of Cabeceiras de Basto, men have been grazing flocks of sheep since time immemorial to get food and wool - a raw material that was once essential for protecting and warming the body. In the past, during the free time between tending to their fields and household chores, the women of Bucos were busy working with wool. Today, working with wool is no longer the daily task of women, but it remains an essential part of the village's identity and heritage, to be cherished and preserved, passed down from generation to generation. In this context, the Casa da Lã (House of Wool) was created in 2012. This project received significant support from the municipality of Cabeceiras de Basto, with the aim of preserving and promoting this art using traditional processes.

This cultural facility serves as an interpretation centre, featuring four looms and hosting an exhibition that explains the various stages of wool processing. It is also a meeting place for the Women of Bucos, a group of women who enjoy sharing the secrets of wool with visitors. Every Thursday afternoon, visitors can watch them perform various wool-related activities. Visitors can buy socks, blankets and bedspreads made in Bucos since time immemorial, but also more contemporary items such as scarves, jackets, gloves and more... Come and visit Casa da Lã and the extraordinary wool craftsmanship of the Women of Bucos.

INFORMATION ABOUT VISITS

Location:
Casa da Lã
Travessa da Escola, Bucos
4860-122 Bucos, Cabeceiras de Basto

Booking:
Booking
required, at least 5 days
in advance (subject to availability)

Booking contacts:
Casa da Lã
Tel.: +351 253 751 258
Email: casadala@cabeceirasdebasto.pt

Visiting days:
Monday to Friday:
9.00 am - 12.30 pm
(last visit at 12.00 pm)
and 2.00 pm - 5.30 pm
(last visit at 5.00 pm)
Saturday: booked visits
Sunday: 2.00 pm - 5.00 pm
Closed on Saturdays and public holidays

Number of visitors: Max. 50
Duration of the visit: 30 minutes
Shop: Yes

For more information, please visit:
Visit Cabeceiras



CABECEIRASdeBASTO

Wool craftsmanship, an ancestral know-how preserved by Casa da Lã

Arco de Baúlhe Railway Museum

At Cabeceiras de Basto, the town of Arco de Baúlhe is a must-visit, especially the old railway station, now transformed into the Arco de Baúlhe Railway Museum.

On 15 January 1949, the Arco de Baúlhe station was solemnly inaugurated, with music bands and fireworks. At the time, it was a highly significant project for this municipality. The railway brought improved mobility of people and goods to these lands. People used the train to travel to the fairs in Amarante, Celorico de Basto and Fermil de Basto, or to the festivals of Senhora da Graça and S. Gonçalo in Amarante. You left or arrived by train to sell, buy, go to the army, study, enjoy a leisurely ride, date...

With the closure of the Tâmega railway line between Amarante and Arco de Baúlhe in 1990, the facility was transformed into the Arco de Baúlhe Railway Museum, a heritage site that encompasses history,

the preservation of collective memory, and the identity of the people in this region. In 2000, the station premises and its buildings were transferred to the Cabeceiras de Basto City Council, which became responsible for its preservation and management.

This architectural complex consists of the station building, a goods loading and unloading platform, two stables, and a turntable. There are railway vehicles on display, including two saloon cars used by King Carlos and his wife, Queen Amélia. Near this complex there is a beautiful area where we can still find the narrow-gauge railway line.

Visit us and discover this wonderful historical heritage, local and national cultural legacy.

INFORMATION ABOUT VISITS

Location:

Terras de Basto Museum/
Arco de Baúlhe Railway Museum
Rua da Estação, Arco de Baúlhe
4860-068 Arco de Baúlhe

Booking:

Booking required, at least 5 days in advance (subject to availability)

Booking contacts:

Terras de Basto Museum/
Arco de Baúlhe Railway Museum
Tel.: +351 253 666 350
Email:
museuterrasdebasto@cabeceirasdebasto.pt

Visiting days:

Tuesday to Sunday: 9.00 am
(first visit at 09.15 am);
12.30 pm (last visit at 11.45 am);
2.00 pm (first visit at 2.15 pm); 5.30 pm
(last visit at 4.45 pm).
Closed Mondays, 1 January and 25 December.

Number of visitors: Max. 50

Duration of the visit: 45 minutes

Shop: Yes

For more information, please visit:

www.visitcabeceiras.pt



CABECEIRASdeBASTO



Grupo Dinamizador
Rede Portuguesa de

**turismo
industrial**



ESPOSENDE

The geographical setting of the municipality of Esposende is magnificent.

It is a place where the rivers Neiva and Cávado, the Atlantic Ocean, the countryside, and the mountains converge in perfect harmony, establishing this area as one of the most sought-after destinations on the northern coast of Portugal.

The longstanding history of settlement in Esposende reveals a legacy stretching back to Prehistory and continuing into the present day, offering a wealth of cultural heritage, monumental, artistic, and ethnographic resources.

Esposende is also rich in natural heritage throughout the entire municipality, with highlights like the North Coast Natural Park, including the coastline with its beaches, dunes,

and adjacent forest areas; fields situated between the sea and the fossil cliff; the entire fossil cliff between the Cávado and Neiva rivers and their estuaries; the Cávado River, ideal for water sports; and the Neiva River, with scenic views and several old watermills that have stood the test of time.

Living up to its nickname as the "Land of the Sea," Esposende invites you to visit at a leisurely pace, enjoying the pleasant blend of nature and nautical tourism, complemented by a healthy cuisine full of Atlantic flavors.

The development of Industrial and Creative Tourism is a core commitment, demonstrated by various initiatives at the Forjães Reed Interpretation Center, located in the Rodrigues de Faria Cultural Center; the Sargaço Museum in Apúlia; and the Abelheira Mills Park in Marinhas.

Esposende, a Taste for Life.

www.visitesposende.com/pt/fazer/turismo-industrial

Junco Reed Interpretation Center

The Junco Reed Interpretation Center is located on the lower floor of the Forjães Cultural Center, with walls covered in tile panels by painter and ceramicist Jorge Rey Colaço. The centerpiece of the exhibit is a centuries-old loom, displayed between the staircase of the building's old patio, which was originally built by the local benefactor António Rodrigues de Faria as an elementary school.

On the walls, a series of panels cover themes such as the History of Esteireiros, Junco Plant and Ecosystem, Junco Crafts and Trades, and its Commercialization. The exhibit also includes two smaller looms, as well as a range of baskets and artifacts associated with this sustainable, eco-friendly craft. This center has broadened horizons for new discoveries around this natural fiber (*Juncus maritimus*), enabling the development of initiatives in both handicrafts and industrial and creative tourism.

INFORMATION ABOUT VISITS

Location:

Forjães Cultural Center
Av.ª Santa Marinha, 12, Forjães
GPS: 41.60655795613642,
-8.741240683844664

Visiting Hours:

Monday to Friday
9:30 am - 5:00 pm
winter and summer hours

Group Visits:

Book at least one week in advance.
Contact: (+351) 253 877 430
juntadefreguesia@forjaes.pt

Group Size:

Minimum 10, maximum 25 participants
(group visits)

Minimum Age:

Under 18 must be accompanied
by an adult

Languages: Portuguese

Visit Duration: Self-guided - 1 hour /
Guided tour - 1.5 hours

Store: Yes

More information at:

<https://forjaes.pt/centro-interpretativo-do-junco/> ou <https://www.visites-posende.com/pt/fazer/monumentos/centro-interpretativo-do-junco>

ESPOSENDE



The Forjães Interpretation Center, more than a place of memory, propels us into a traditional and fascinating art, full of potential.



Sargaço Museum

Located in the former Areia Primary School in Apúlia, this museum revives the tradition of “seaweed harvesting,” which was, and remains, an important tradition for the people of Apúlia. The first floor houses the reception/welcome area, restrooms, a multipurpose room, and a storage area for exhibit materials and art restoration. The main exhibit is located on the upper floor.

Outside, there is a themed plaza dedicated to seaweed harvesting and an open-air “auditorium” that hosts lectures and events on seaweed harvesting and related exhibits.

INFORMATION ABOUT VISITS

Location:

Rua Fonte da Senhora da Guia, 6, Apúlia
GPS: 41°29'0.32"N; 8°46'23.63"W

Visiting Hours:

Tuesday to Sunday
Closed Mondays, Christmas,
New Year's Day, and Easter
Tuesdays to Fridays: 10:00 am - 1:00 pm
and 2:00 pm - 5:00 pm
Weekends and holidays: 2:00 pm - 5:00
pm; summer months until 6:00 pm

Group Visits:

Book at least one week in advance
Contact: (+351) 253 960169
museu.municipal@cm-esposende.pt

Group Size:

Minimum 10, maximum 25 participants
(group visits)

Minimum Age: Under 18 must
be accompanied by an adult

Languages: Portuguese, English

Visit Duration:

Self-guided - 30 mins /
Guided tour - 45 mins

Store: No

More information at:

<https://www.visitesposende.com/pt/fazer/monumentos/museu-do-sargaco>

ESPOSENDE



The Sargaço Museum aims to preserve, share, and promote the seaweed harvesting culture of the entire municipality of Esposende.



Abelheira Mills Park

In this unique exhibition journey, visitors are invited to explore and understand the technological and communal aspects of milling systems, focusing on the Bread Cycle. Set in a landscape infused with the scent of the sea and the texture of the earth, the experience begins with a traditional mill and its original mechanisms, where Wind plays an essential role. The journey continues with an exhibition centered on Bread, examined in its many material and intangible forms, evoking the primal and ancestral significance of this staple in human evolution. From territory to the concept of time, visitors explore the cyclical nature of the sun's path and its impact on traditions, material culture,

and immaterial values that shape the individual, family, and traditional community life. Esposende emerges as a place of belonging and identity, where Bread, a syncretic symbol, finds its full meaning. This integrative and interpretative journey highlights the cycles of corn and rye cultivation, emblematic grains of the region. Traditional technologies and unique elements like granaries, threshing floors, and ovens, along with traditional tools and equipment such as plows, harrows, ox carts, windmills, and water mills, reflect the customs and knowledge passed down through generations, celebrating the cultivation, milling, and baking of bread.

INFORMATION ABOUT VISITS

Location:
Rua da Abelheira, Marinhas
GPS: 41°33'59.58"N; 8°46'32.95"W

Visiting Hours:
Self-guided outdoor exhibit with informational panels;
Open at all times
Mill Interior Visits: Appointment required

Group Visits:
Book at least one week in advance
Contact: (+351) 253 960 100
turismo@cm-esposende.pt

Group Size:
Minimum 10, maximum 25 participants
Minimum Age: Under 18 must be accompanied by an adult
Languages: Portuguese, English
Visit Duration:
Self-guided – 1 hour /
Guided tour – 1.5 hours
Store: No

More information at:
<https://www.visitesposende.com/pt/fazer/monumentos/parque-dos-moinhos-dabelheira>



ESPOSENDE

The Abelheira Mills Park witnesses the 'intense, perpetual dialogue between land and sea.'



Grupo Dinamizador
Rede Portuguesa de

**turismo
industrial**



FELGUEIRAS

Felgueiras is experiencing rapid development and is recognised for its talent, unique vocation, and entrepreneurial skills.

The work of its people has allowed for the largest footwear cluster in the country to emerge. Most of its production is for export, making a significant impact on Felgueiras, the region and the country.

In Felgueiras you'll have the opportunity to see advanced entrepreneurship in the footwear, textile and agri-food industries, as well as pieces of art created by the skilled hands of embroiderers, alongside other traditions and crafts.

Exploring Industrial Heritage in Felgueiras will allow you to enjoy Factory Tours carried out in living industry or industrial heritage sites, related to products and production processes, or connected to their historical and cultural past.

The Business Tourism Route offers you the opportunity to explore and actively participate in the activities of renowned companies in the production of footwear, wines, kiwi fruit, biodynamic agriculture, confectionery and embroidery.

Come try, savour and feel...
Felgueiras!

<https://visitfelgueiras.com/turismo-industrial/>

Atlanta

Specialising in the development and production of soles for the footwear industry, Atlanta has its own facilities covering an area of around 8,000 m² and a production capacity of 20,000 soles/day. It stands out for the boldness, originality and design of its own collections, offering a wide range of sole models known for their technical complexity and quality.

INFORMATION ABOUT VISITS

Location:
R. do Marco de Simões, 1644
4615-414 Lixa, Felgueiras

Booking:
Required, 5 days in advance

Booking contacts:
Tel.: +351 255 490 350
Email: inovacao@atlantasteps.com

Visiting days:
Monday to Friday
(Closed in August and at Christmas)
Number of visitors: Min. 6 - Max. 12
Languages: Portuguese and English
Shop: No
Showroom: Yes
Accessibility for people with specific needs: Yes

For more information, please visit:
www.atlantasteps.com

FELGUEIRAS



The Marco de Canaveses Stone Museum is much more than meets the eye.



Casa do Risco

The mission of Casa do Risco, in Felgueiras, is to promote, produce and restore Terra de Sousa Embroidery and to protect and enhance the work of embroiderers, contributing to the consolidation of craftsmanship as a factor in entrepreneurship and as a driver of economic development in the region. Here you'll find magnificent linen work, embroidered by the magical hands of local embroiderers.

INFORMATION ABOUT VISITS

Location:
Avenida da Liberdade, 1285
Airães - Felgueiras

Booking:
Required, 3 days in advance

Booking contacts:
Tel.: +351 255 488 812
Email: casadorisco@casadorisco.pt

Visiting days:
Monday to Saturday

Number of visitors: Max. 25
Languages: Portuguese
Shop: Yes
Showroom: Yes
Accessibility for people with specific needs: Yes

For more information, please visit:
www.cm-felgueiras/casa-do-risco

FELGUEIRAS



Criações Virgínia

'CRIAÇÕES VIRGÍNIA' was established in 2003, the result of the extensive experience of its managing partner, Virgínia Correia, in the art of embroidery. Since then, we have invested in machines and accessories capable of producing quality products at a low cost. We work with the national and international markets. We are a small company with the motto 'QUALITY AND HONESTY'.

INFORMATION ABOUT VISITS

Location:
R. Marco de Simões, 431
4615-380 Lixa - Felgueiras

Booking:
Required, 7 days in advance

Booking contacts:
Tel.: +351 255 491 228
Email: virginiacorreia@msn.com

Visiting days:
Monday to Friday
(Closed from 15 to 30 August)

Number of visitors: Min. 4 - Max. 10
Minimum age: 4+
Languages: Portuguese + English
Shop: No
Showroom: Yes
Accessibility for people with specific needs: Yes

For more information, please visit:
visitfelgueiras.com

FELGUEIRAS



Margaride Sponge Cake Factory

The Margaride Sponge Cake is a delicious confectionery with about 300 years of tradition, and has been served at the table of the Portuguese Royal Family since the 19th century. Its recipe remains unchanged to this day. A visit to the Margaride Sponge Cake House Museum is a must, as you can watch or participate in the making, taste and buy this exquisite delicacy!

INFORMATION ABOUT VISITS

Location:
Praça da República, 304
4610-116 Felgueiras

Booking:
Required, 2 days in advance

Booking contacts:
Tel.: +351 255 312 121
Email: geral@paodelodemargaride.com

Visiting days:
Monday to Friday

Number of visitors: Min. 2 - Max. 50
Languages: Portuguese + English
Shop: Yes
Showroom: Yes

For more information, please visit:
www.paodelodemargaride.com

FELGUEIRAS



Felmini

With values such as passion, integrity and respect, we create original, captivating and cosmopolitan shoes. We work as a team with young, creative designers, dreamers who absorb all the information and translate it into unique, innovative products, full of life and joy, in a world full of colour! This is Felmini®. It's joy, it's a state of mind, it's an attitude that seeks the happiness of women with a perpetually youthful spirit. Felmini® is a Portuguese brand registered and produced by footwear factory J. Moreira SA.

INFORMATION ABOUT VISITS

Location:
R. Fonseca Moreira, 525
4610-311 Felgueiras

Booking:
Required, 8 days in advance

Booking contacts:
Tel.: +351 255 310 280
Email: administrativos@felmini.com.pt

Visiting days:
Monday to Friday

Number of visitors: Min. 4 - Max. 10
Languages: Portuguese
Shop: Yes
Showroom: Yes
Accessibility for people with specific needs: Yes
(Indicate upon booking)

For more information, please visit:
www.felmini.com.pt



FELGUEIRAS



Hearts

HEARTS is a company dedicated to the artisanal production of the wonderful and traditional embroidery of Terra de Sousa. At HEARTS, the richness of the embroidered textiles comes from the unique craftsmanship of the delicate hands of the embroiderers from Vale de Sousa, in the heart of the Route of the Romanesque, in the north of Portugal.

INFORMATION ABOUT VISITS

Location:
Edifício El Rei D. João
Av. Dr. Machado de Matos
4615-655 Lixa - Felgueiras

Booking:
Required, 3 days in advance

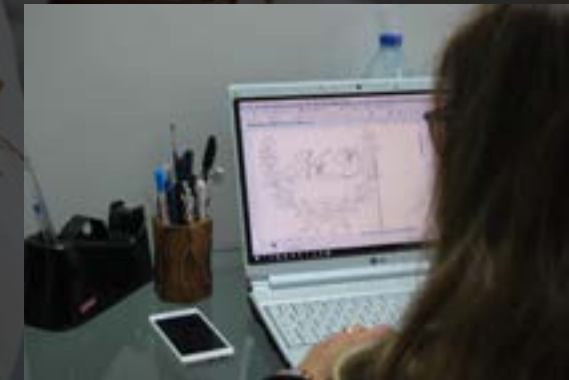
Booking contacts:
Tel.: +351 916 751 488
Email: info@hearts.pt

Visiting days:
Monday to Saturday

Number of visitors: Max. 20
Languages: Portuguese + English + French
Shop: Yes
Showroom: Yes
Accessibility for people with specific needs: Yes

For more information, please visit:
www.hearts.pt

FELGUEIRAS



Jefar

JEFAR produces footwear and owns the brands PRATIK and IMAGINI. Innovation, new technologies, fashion design, strict quality control, and a constant pursuit of specific benefits for the well-being of consumers' feet are the strengths that contribute to the brand's recognition and the loyalty of demanding footwear consumers.

INFORMATION ABOUT VISITS

Location:
R. do Outeiro, 63
4815-621 Regilde

Booking:
Required, 7 days in advance

Booking contacts:
Tel.: +351 253 580 100
Email: pratik@jefar.pt

Visiting days:
Wednesday

Number of visitors: Min. 15 - Max. 20
Minimum age: 12+
Languages: Portuguese + English
Shop: Yes
Showroom: Yes

For more information, please visit:
www.pratikshoes.com

FELGUEIRAS



Leira Calçados

Over the past 30 years, Leira has been engaged in footwear manufacturing. Established in the early 1980s, the company has evolved and is now a stable and healthy SME, built on strong foundations for the future. Leira Calçados owns the brands Playmotives and Walking to Fly.

INFORMATION ABOUT VISITS

Location:
R. da Leira, 494
4610- 423 Felgueiras

Booking:
Required, 8 days in advance

Booking contacts:
Tel.: +351 255 923 480
Email: geral@leira.pt

Visiting days:
Monday to Friday

Number of visitors: Min. 5 - Max. 20

Minimum age: 10+

Languages: Portuguese + English

Shop: Yes

Showroom: Yes

Accessibility for people with specific needs: Yes

For more information, please visit:
www.leira.pt



Nobrand

Established in 1988, Nobrand became famous for its timeless commitment to redefining technology from day one. This effort has played a pivotal role in transforming the traditional Portuguese footwear manufacturing style - a concept that is increasingly gaining international recognition. The ability to constantly reinvent classics is one of our most important characteristics.

INFORMATION ABOUT VISITS

Location:
Zona Industrial Longra
4650-328 Longra

Booking:
Required, 2 days in advance

Booking contacts:
Tel.: +351 255 340 400
Email: info@nobrand.pt

Visiting days:
Monday to Friday
(Closes in the second fortnight of August and December)

Number of visitors: Min. 4 - Max. 10

Minimum age: 4

Languages: Portuguese + English

Shop: No

Showroom: Yes

Accessibility for people with specific needs: Yes

For more information, please visit:
www.nobrand.pt



Quinta da Lixa

Quinta da Lixa is the living testimony to the passion that the Meireles family has always had for Vinho Verde. Its wines have won awards in the most prestigious national and international competitions. It has excellent facilities for hosting groups, offering wine tours and tastings, as well as a shop.

INFORMATION ABOUT VISITS

Location:
Av. Dr Machado de Matos, 547
4615-658 Lixa, Felgueiras

Booking:
Required, 1 day in advance

Booking contacts:
Tel.: +351 255 490 590
Email: geral@monverde.pt

Visiting days:
Monday to Friday

Languages: Portuguese + English
Shop: Yes
Showroom: Yes
Accessibility for people with specific needs: Yes

For more information, please visit:
www.monverde.pt



FELGUEIRAS



Quinta da Palmirinha

Quinta da Palmirinha, spanning just three hectares and located in Borba de Godim, near the entrance to the city of Lixa, boasts a stunning view of the Marão and Alvão mountain ranges. Renowned for vine cultivation and certified by DEMETER, a leading global certifier in Biodynamic Agriculture, the estate produces grape and apple juice, along with wine.

INFORMATION ABOUT VISITS

Location:
Travessa de Bouça-Chã, 86
4615-307 Borba de Godim

Booking:
Required, 3 days in advance

Booking contacts:
Tel.: +351 962 785 717
Email: sumbi@sapo.pt

Visiting days:
Every day

Number of visitors: Max. 20
Minimum age: 10+
Languages: Portuguese + English + French
Shop: No
Showroom: Yes

For more information, please visit:
visitfelgueiras.com

FELGUEIRAS



Quinta de Maderne

Quinta de Maderne opens its doors to welcome you, offering unique conditions for you to enjoy nature with utmost comfort. Amenities at Quinta de Maderne include a swimming pool, a fitness trail in a beautiful forest setting, a wine bar for tasting their wines, and much more. Additionally, at the estate's shop, you can purchase their Vinho Verde, honey and seasonal vegetables. Discover the secrets of a wine that is truly one-of-a-kind in the world.

INFORMATION ABOUT VISITS

Location:
Quinta de Maderne
4610-815 Maderne- Felgueiras

Booking:
Required, 8 days in advance

Booking contacts:
Tel.: +351 919 888 343
Email: geral@quintademaderne.com

Visiting days:
Monday to Saturday

Number of visitors: Min. 5 - Max. 30
Minimum age: 10+
Languages: Portuguese + English
Shop: Yes
Showroom: Yes
Accessibility for people with specific needs: Yes

For more information, please visit:
www.quintademaderne.com



FELGUEIRAS



Rosa Sousa

A company with its own manufacturing since 1974, dedicated to blending knowledge and flavours by reinventing traditional recipes and creating unique products. Iconic products: Margaride Sponge Cake, Cavaquinhas de Margaride, Cavaquinhas da Serra (exclusive product), Abade de Priscos pudding - Margaride sponge cake semi-freddo, Doce do Foral.

INFORMATION ABOUT VISITS

Location:
Praceta do Foral, 84
4610-124 Felgueiras

Booking:
Required, 3 days in advance

Booking contacts:
Tel.: +351 961 403 574
Email: ze.mario.s@hotmail.com

Visiting days:
Monday to Friday

Number of visitors: Min. 2 - Max. 12
Minimum age: 10+
Languages: Portuguese + English + French
+ German
Shop: Yes
Showroom: Yes
Accessibility for people with specific needs: Yes

For more information, please visit:
visitfelgueiras.com

FELGUEIRAS



Terras de Felgueiras Caves Felgueiras, C.R.L.

The Felgueiras Agricultural Cooperative was founded in 1957. This institution is based on three main pillars: wine-growing, fruit-growing (kiwifruit), and the sale of production factors both to its members and to the general public. It recently became the first institution of its kind to be recognised by the Portuguese Standard for Social Responsibility.

INFORMATION ABOUT VISITS

Location:
R. Tenente Coronel António Emídio
Moreira Peixoto, 1258
4610-213 Felgueiras

Booking:
Required, 2 days in advance

Booking contacts:
Tel.: +351 255 312 666
Email: geral@coopfelgueiras.pt

Visiting days:
Monday to Friday

Number of visitors: Min. 2 - Max. 50

Languages: Portuguese + English

Shop: Yes

Showroom: Yes

**Accessibility for people
with specific needs:** Yes

For more information, please visit:
www.coopfelgueiras.pt



FELGUEIRAS





Grupo Dinamizador
Rede Portuguesa de

**turismo
industrial**



FREIXO de ESPADA à CINTA

Freixo is History... written in its stones, at a time when the land was sacred, and animals were deities. Freixo is Douro... a Douro that carved nature, and Man its slopes, always standing firm at the forefront of defending a centuries-old nation, opening its heart to its neighbouring brethren. Freixo is Trás-os-Montes. Strong, ingenious, moulded in the land, and intertwined with the soul of its people. Looking at it is contemplating the borders of a territory, lost, conquered, where time belongs to neither the past nor the future... - It's ours!

A territory with many peculiarities, where valleys and plateaus intersect with deep gorges carved by the Douro, enclosing unique ecosystems with an impressive variety of fauna and flora.

Freixo is the dawn of the landscape... Its the line on the horizon... Its the longings of a desire... It's devotion and need... Passion and emotion... It's a way of living and feeling... It's a territory that captivates and dazzles. It shows the magic of the land we are... and which reflects in magnificent and unmistakable landscapes, simple rarities, where the sun marks the day and the medieval tower bell marks the hours.

A sweet and innocent yet always unsettling mysticism runs through this place that sanctifies not only divine and artistic time, where each of us ultimately see ourselves in personal and collective faith, but above all as a landmark of Christianity in a contiguous territory where every rock, every tree, every prayer and every story takes on a solemn gravity. Its people perpetuate the traditions, the know-how in various forms of life, as, in their hands, devotion and history are the hallmarks of their roots.

Pure silk work is vibrant and alive. More than an attempt to respond to the uniqueness of the landscape, it is a centuries-old commitment between work, materials and beauty, showing grandeur and humility, opulence and simplicity, reality and imagination. Here, ancestral talents in silk work still culminate today in the dream of a butterfly. From the cocoon to silk, there is a thread that guides us, uniting us to the ingenuity and skill of those who inherited a knowledge that insists on not being forgotten.

The knowledge of Freixo is genius and identity, nature and culture, land and hand, inscribed in the Soul of a People.

www.cm-freixoespadacinta.pt

Silk and Territory Museum

Just like now, agriculture was, for centuries, the livelihood of a significant portion of the people of Freixo. However, and simultaneously, there were other activities that, due to their social and economic importance, deserve to be highlighted: silks manufacturing, hat making, and trade with Spain. In 1793, six hat production units annually manufactured 1,150 units, and there were 16 factories with 73 looms in operation in Freixo de Espada à Cinta. Those employed 71 weavers in the production of carpets, fabrics, ties, ribbons, and sieve cloths. Currently, there is still a small artisanal variant of silk manufacturing and its by-products in this town, so Freixo de Espada à Cinta can take pride in being the custodian of a unique traditional art in the country and virtually unparalleled in Europe: the breeding of silkworms and its extraction using ancestral and artisanal processes.

Considering silk production a true ex-libris of Freixo de Espada à Cinta, and with the tenacity that characterises the inhabitants of this region of Trás-os-Montes, a new impetus was given to this art with the inclusion of the processes and materials used in the artisanal extraction of silk in the Silk and Territory Museum of Freixo de Espada à Cinta. In this exceptional place, the entire process of artisanal silk production is recreated, from the blooming of mulberry trees (whose leaves are the essential food for silkworms) to the preparation of the cocoons, extraction of the silk thread, spinning, treatment, and manual weaving work by the magical hands of the weavers.

INFORMATION ABOUT VISITS

Location:
Silk and Territory Museum
Largo do Outeiro, 13
5180-118 Freixo de Espada à Cinta

Booking:
Required, at least 48 hours
in advance

Booking contacts:
Silk and Territory Museum
Tel.: +351 279 658 163
Email: museu.seda@cm-fec.pt

Visiting days:
Tuesday to Sunday
(closed on Mondays, for weekly rest)

Number of visitors: Min. 6 - Max. 20
Duration of the visit: approx. 45 minutes
Shop: Yes

For more information, please visit:
[WEBSITE](#)

FREIXO de ESPADA à CINTA



Freixo de Espada à Cinta
land of living heritage and culture





Grupo Dinamizador
Rede Portuguesa de

**turismo
industrial**



GONDOMAR

Gondomar is known as the 'Capital of Goldsmithery' in Portugal. Filigree holds a prominent place among the creations of local goldsmiths. Crafted in small-scale, family-run workshops, it is produced using techniques passed down from generation to generation.

The Route of the Filigree allows you to visit traditional workshops, meet genuine goldsmiths from Gondomar, and explore the entire artisanal production process. The visit begins at the Gondomar Municipal Filigree Museum, which brings together a diverse collection of tools and machinery donated by local goldsmiths who aim to share and showcase their craft to the general public. The museum also features a valuable collection of unique pieces, including the 'World's Largest Filigree Heart' and the 'Filigree Dress by Micaela Oliveira', as well as the most iconic pieces of traditional Portuguese filigree.

www.rotadafiligrana.pt

<https://visitgondomar.cm-gondomar.pt/ver-e-fazer/descobrir-a-rota-da-filigrana/a-filigrana>

Gondomar Municipal Filigree Museum

The municipality of Gondomar is currently the largest jewellery production centre in the country, earning it the epithet 'Capital of Goldsmithery.' Among the various techniques associated with the art of goldsmithery, filigree was the most popular. From the 18th century onwards the activity flourished, and by the early 20th century, Gondomar was already recognised in Portugal for its artisanal filigree production, with several family generations and an extraordinary concentration of skilled labour engaged in this craft. In 1940, the filigree heart became part of the municipality's Coat of Arms, becoming an identity element of the territory's collective memory, representing not only the economic but also the socio-cultural impact that this activity has on the community.

In 2016, the municipality of Gondomar structured the tourist product 'Route of the Filigree' based on the most iconic economic activity in the region. It allows visitors to explore six traditional workshops, workspaces that, for the first time, opened their doors to the public to showcase their art. The Factory Tour is enriched with an introductory Filigree workshop at CINDOR, the only Vocational Training Centre for the Goldsmithery Industry in the country, specialising in education within this sector. Here, visitors are invited to create a piece, learning some of the ancestral techniques of working with filigree. The Gondomar Municipal Filigree Museum was inaugurated in 2022, serving as the Welcome Centre for the Route of the Filigree, the starting point for discovering this art and its legacy, followed by visits to traditional workshops.

INFORMATION ABOUT VISITS

Location:
Travessa da Convenção de Gramido, 41
4420-416 Valbom

Booking:
Visits to traditional workshops
require booking 3 working days in advance.
Booking at:
[https://visitgondomar.cm-gondomar.pt/
ver-e-fazer/descobrir-a-rota-da-filigrana/
marcacao-de-visitas/](https://visitgondomar.cm-gondomar.pt/ver-e-fazer/descobrir-a-rota-da-filigrana/marcacao-de-visitas/)
or turismo@cm-gondomar.pt

Booking contacts:
Tourism Division / Gondomar Municipal
Museum of the Route of the Filigree
Tel.: +351 932 006 341
+351 932 003 358
Email: turismo@cm-gondomar.pt

Visiting days:
Gondomar Municipal Museum of the Route
of the Filigree: Tuesday to Saturday:
10.00 am - 1.00 pm / 2.00 pm - 6.00 pm
Public holidays on request.
CINDOR: Closed on weekends, public holidays
and August.

Number of visitors: Min. 4 - Max. 50
Languages: Portuguese + English + French
Duration of the visit: Museum - 40 min.
Workshop - 50 min.

Shop: Yes

For more information, please visit:
www.rotadafiligrana.pt



GONDOMAR



Route of the Filigree

ARPA

The Route of the Filigree consists of the Gondomar Municipal Filigree Museum, six traditional workshops, and CINDOR.

ARPA - Artigos de Ourivesaria, Lda. is a workshop affiliated with the Route of the Filigree and holds the 'Filigree of Portugal - Certified Artisanal Product' certification.

The company was established in 1986, and its founder and current manager, António Rodrigo Pinto de Almeida, began his apprenticeship in the art of goldsmithery at the young age of 14.

ARPA began its activity with traditional products, focusing on the production of filigree and cutlery. Over the years, it expanded its product range to include personal items and decorative products.



INFORMATION ABOUT VISITS

Location:
Travessa da Convenção de Gramido, 41
4420-416 Valbom

Booking:
Visits to traditional workshops require booking 3 working days in advance.
Booking at:
<https://visitgondomar.cm-gondomar.pt/ver-e-fazer/descobrir-a-rota-da-filigrana/marcacao-de-visitas/>
or turismo@cm-gondomar.pt

Booking contacts:
Tourism Division / Gondomar Municipal Museum of the Route of the Filigree
Tel.: +351 932 006 341
+351 932 003 358
Email: turismo@cm-gondomar.pt

Visiting days:
Gondomar Municipal Museum of the Route of the Filigree: Tuesday to Saturday:
10.00 am - 1.00 pm / 2.00 pm - 6.00 pm
Public holidays on request.
CINDOR: Closed on weekends, public holidays and August.

Number of visitors: Min. 4 - Max. 50
Languages: Portuguese + English + French
Duration of the visit: Museum - 40 min.
Workshop - 50 min.
Shop: Yes

For more information, please visit:
www.rotadafiligrana.pt



GONDOMAR

Route of the Filigree, discover the craftsmanship behind a luxury item



Route of the Filigree

AC Filigranas

The Route of the Filigree consists of the Gondomar Municipal Filigree Museum, six traditional workshops, and CINDOR.

AC Filigranas is a workshop affiliated with the Route of the Filigree and holds the 'Filigree of Portugal - Certified Artisanal Product' certification.

The traditional filigree workshop was founded in 1970, initially by António Oliveira Cardoso's father. Since 1990, the company has been run by António Cardoso and his wife, Rosa Cardoso.

The brand AC Filigranas was created in 2014, at a time when the work of filigree artisans gained international recognition, after actress Sharon Stone wore one of the filigree hearts produced in their workshop. After the actress showcased it in Los Angeles, the craftsman from Gondomar received numerous orders, giving a new impetus to the Goldsmithery Industry and Filigree in particular.



INFORMATION ABOUT VISITS

Location:
Travessa da Convenção de Gramido, 41
4420-416 Valbom

Booking:
Visits to traditional workshops require booking 3 working days in advance.
Booking at:
<https://visitgondomar.cm-gondomar.pt/ver-e-fazer/descobrir-a-rota-da-filigrana/marcacao-de-visitas/>
or turismo@cm-gondomar.pt

Booking contacts:
Tourism Division / Gondomar Municipal Museum of the Route of the Filigree
Tel.: +351 932 006 341
+351 932 003 358
Email: turismo@cm-gondomar.pt

Visiting days:
Gondomar Municipal Museum of the Route of the Filigree: Tuesday to Saturday:
10.00 am - 1.00 pm / 2.00 pm - 6.00 pm
Public holidays on request.
CINDOR: Closed on weekends, public holidays and August.

Number of visitors: Min. 4 - Max. 50
Languages: Portuguese + English + French
Duration of the visit: Museum - 40 min.
Workshop - 50 min.
Shop: Yes

For more information, please visit:
www.rotadafiligrana.pt



GONDOMAR

Route of the Filigree, discover the craftsmanship behind a luxury item

Route of the Filigree

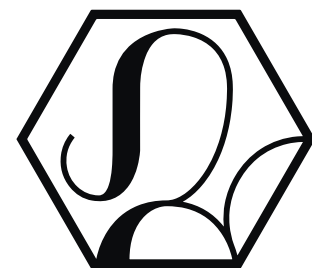
J. Monteiro de Sousa e Filhos, Lda

The Route of the Filigree consists of the Gondomar Municipal Filigree Museum, six traditional workshops, and CINDOR.

J. Monteiro de Sousa & Filhos, Lda. is a workshop affiliated with the Route of the Filigree and holds the 'Filigree of Portugal - Certified Artisanal Product' certification.

JMS was established in 1953 by Joaquim Monteiro. Filigree production is undoubtedly its main strength, but the company passionately and wholeheartedly produces all types of gold or silver jewellery.

It has all kinds of machinery and technology for mass production, as well as the talent and precision to create



100% handmade pieces. As the sector is directly linked to the fashion industry, the need for innovation and experimentation is constant. With motivation, complete openness and dedication, it faces all kinds of challenges proposed by brands and designers.

INFORMATION ABOUT VISITS

Location:
Travessa da Convenção de Gramido, 41
4420-416 Valbom

Booking:
Visits to traditional workshops require booking 3 working days in advance.
Booking at:
<https://visitgondomar.cm-gondomar.pt/ver-e-fazer/descobrir-a-rota-da-filigrana/marcacao-de-visitas/>
or turismo@cm-gondomar.pt

Booking contacts:
Tourism Division / Gondomar Municipal Museum of the Route of the Filigree
Tel.: +351 932 006 341
+351 932 003 358
Email: turismo@cm-gondomar.pt

Visiting days:
Gondomar Municipal Museum of the Route of the Filigree: Tuesday to Saturday:
10.00 am - 1.00 pm / 2.00 pm - 6.00 pm
Public holidays on request.
CINDOR: Closed on weekends, public holidays and August.

Number of visitors: Min. 4 - Max. 50
Languages: Portuguese + English + French
Duration of the visit: Museum - 40 min.
Workshop - 50 min.
Shop: Yes

For more information, please visit:
www.rotadafiligrana.pt

GONDOMAR



Route of the Filigree, discover the craftsmanship behind a luxury item



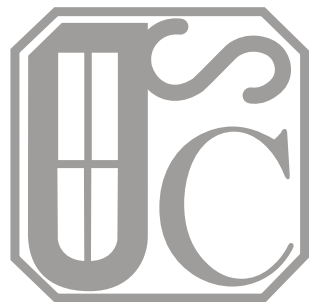
Route of the Filigree

Classic Silver

The Route of the Filigree consists of the Gondomar Municipal Filigree Museum, six traditional workshops, and CINDOR.

Classic Silver Unipessoal, Lda. is a workshop affiliated with the Route of the Filigree and holds the 'Filigree of Portugal - Certified Artisanal Product' certification.

The company was established in 2012 by Tiago Emanuel Pereira, who represents the third generation of goldsmiths, following the tradition of his paternal family from Gondomar (parish of Jovim). He learned from his father, Eduardo Manuel Martins Pereira, the company's manager, and his grandfather Ernesto Ribeiro Pereira.



Classic Silver specialises in the manufacturing of jewellery items, with a particular focus on the production of filigree pieces. As a micro-enterprise, it relies on skilled and experienced workers who ensure the quality of each product.

INFORMATION ABOUT VISITS

Location:
Travessa da Convenção de Gramido, 41
4420-416 Valbom

Booking:
Visits to traditional workshops require booking 3 working days in advance.
Booking at:
<https://visitgondomar.cm-gondomar.pt/ver-e-fazer/descobrir-a-rota-da-filigrana/marcacao-de-visitas/>
or turismo@cm-gondomar.pt

Booking contacts:
Tourism Division / Gondomar Municipal Museum of the Route of the Filigree
Tel.: +351 932 006 341
+351 932 003 358
Email: turismo@cm-gondomar.pt

Visiting days:
Gondomar Municipal Museum of the Route of the Filigree: Tuesday to Saturday:
10.00 am - 1.00 pm / 2.00 pm - 6.00 pm
Public holidays on request.
CINDOR: Closed on weekends, public holidays and August.

Number of visitors: Min. 4 - Max. 50
Languages: Portuguese + English + French
Duration of the visit: Museum - 40 min.
Workshop - 50 min.
Shop: Yes

For more information, please visit:
www.rotadafiligrana.pt



GONDOMAR

Route of the Filigree, discover the craftsmanship behind a luxury item



Route of the Filigree

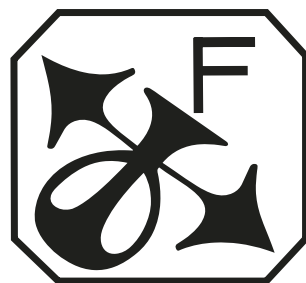
F. Ribeiro, Lda

The Route of the Filigree consists of the Gondomar Municipal Filigree Museum, six traditional workshops, and CINDOR.

F. Ribeiro, Lda. is a workshop affiliated with the Route of the Filigree and holds the 'Filigree of Portugal - Certified Artisanal Product' certification.

Since 1981, F. Ribeiro, Lda has been creating jewellery pieces, exclusively in gold, unique and adapted to new fashion trends, while respecting Portuguese tradition. In 2002, the company incorporated as a society, changed its premises, and shifted its paradigm.

With an identity and a long history in the ancient art of filigree, F. Ribeiro has transformed into a flexible, creative and innovative jewellery design company.



Filigree is an exclusively manual art, requiring artisans to work very meticulously, imaginatively, and with great dexterity.

The Amo Joias Portugal brand exists to make our customers' dreams come true: our secret? A young and motivated team working on personalised projects that our goldsmiths transform into authentic works of art.

INFORMATION ABOUT VISITS

Location:
Travessa da Convenção de Gramido, 41
4420-416 Valbom

Booking:
Visits to traditional workshops require booking 3 working days in advance.
Booking at:
<https://visitgondomar.cm-gondomar.pt/ver-e-fazer/descobrir-a-rota-da-filigrana/marcacao-de-visitas/>
or turismo@cm-gondomar.pt

Booking contacts:
Tourism Division / Gondomar Municipal Museum of the Route of the Filigree
Tel.: +351 932 006 341
+351 932 003 358
Email: turismo@cm-gondomar.pt

Visiting days:
Gondomar Municipal Museum of the Route of the Filigree: Tuesday to Saturday:
10.00 am - 1.00 pm / 2.00 pm - 6.00 pm
Public holidays on request.
CINDOR: Closed on weekends, public holidays and August.

Number of visitors: Min. 4 - Max. 50
Languages: Portuguese + English + French
Duration of the visit: Museum - 40 min.
Workshop - 50 min.
Shop: Yes

For more information, please visit:
www.rotadafiligrana.pt



GONDOMAR

Route of the Filigree, discover the craftsmanship behind a luxury item



Route of the Filigree

Só Ouro

The Route of the Filigree consists of the Gondomar Municipal Filigree Museum, six traditional workshops, and CINDOR.

Só Ouro is a workshop affiliated with the Route of the Filigree and holds the 'Filigree of Portugal - Certified Artisanal Product' certification.

A charismatic family-run business with over 30 years, and a strong connection to the city of Gondomar and its goldsmithery.

It is dedicated to the production and sale of all types of jewellery, with a special focus on creating and producing unique and exclusive pieces tailored to each customer. It has always sought to achieve a fusion between the wisdom of tradition and the boldness of innovation. An example of this is one of its most recognised collections, which combines the art of traditional filigree with cork.



INFORMATION ABOUT VISITS

Location:
Travessa da Convenção de Gramido, 41
4420-416 Valbom

Booking:
Visits to traditional workshops require booking 3 working days in advance.
Booking at:
<https://visitgondomar.cm-gondomar.pt/ver-e-fazer/descobrir-a-rota-da-filigrana/marcacao-de-visitas/>
or turismo@cm-gondomar.pt

Booking contacts:
Tourism Division / Gondomar Municipal Museum of the Route of the Filigree
Tel.: +351 932 006 341
+351 932 003 358
Email: turismo@cm-gondomar.pt

Visiting days:
Gondomar Municipal Museum of the Route of the Filigree: Tuesday to Saturday:
10.00 am - 1.00 pm / 2.00 pm - 6.00 pm
Public holidays on request.
CINDOR: Closed on weekends, public holidays and August.

Number of visitors: Min. 4 - Max. 50
Languages: Portuguese + English + French
Duration of the visit: Museum - 40 min.
Workshop - 50 min.
Shop: Yes

For more information, please visit:
www.rotadafiligrana.pt

GONDOMAR



Route of the Filigree, discover the craftsmanship behind a luxury item



Route of the Filigree

CINDOR

Established on 26 December 1984, it is the only vocational training centre in Portugal specifically dedicated to the goldsmithery and watchmaking sector. In addition to training activities, the school welcomes visitors as part of the Route of the Filigree, offering filigree and chiselling workshops. Visitors are invited to create their own piece under the supervision of specialised trainers. The final piece is given as a gift to the visitor. Groups of 10 people.

CENTRO DE
FORMAÇÃO
PROFISSIONAL
OURIVESARIA
E RELOJOARIA

CINDOR



INFORMATION ABOUT VISITS

Location:
Travessa da Convenção de Gramido, 41
4420-416 Valbom

Booking:
Visits to traditional workshops
require booking 3 working days in advance.
Booking at:
[https://visitgondomar.cm-gondomar.pt/
ver-e-fazer/descobrir-a-rota-da-filigrana/
marcacao-de-visitas/](https://visitgondomar.cm-gondomar.pt/ver-e-fazer/descobrir-a-rota-da-filigrana/marcacao-de-visitas/)
or turismo@cm-gondomar.pt

Booking contacts:
Tourism Division / Gondomar Municipal
Museum of the Route of the Filigree
Tel.: +351 932 006 341
+351 932 003 358
Email: turismo@cm-gondomar.pt

Visiting days:
Gondomar Municipal Museum of the
Route of the Filigree: Tuesday to Saturday:
10.00 am - 1.00 pm / 2.00 pm - 6.00 pm
Public holidays on request.
CINDOR: Closed on weekends, public
holidays and August.

Number of visitors: Min. 4 - Max. 50
Languages: Portuguese + English + French
Duration of the visit: Museum - 40 min.
Workshop - 50 min
Shop: Yes

For more information, please visit:
www.rotadafiligrana.pt

GONDOMAR



Route of the Filigree, discover the craftsmanship behind a luxury item

S. Pedro da Cova Mining Museum

The São Pedro da Cova Mining Museum, the only one focused on coal mining in Portugal, opened its doors in 1989. It reopened to the public on 17 December 2022, with an adapted museological discourse aimed at better communication between the museum and its audience. It also provides resources for educational purposes as well as entertainment.

When you visit the Mining Museum, you'll discover a history that is around 500 million years old: trilobite fossils that take us back to pre-existing seas, and plant fossils to tropical forests, whose vegetation led to the formation of coal, an ore that was exploited in São Pedro da Cova for over 170 years (1793-1970).

'Zé do Passal' welcomes visitors and shares his day-to-day work underground, inviting us to explore the recreation of the underground gallery, thus experiencing an environment close to that of the underground.

As the mine also relies on female labour, the work done by women in the coal treatment process is also portrayed.

There are various regular and on-going initiatives for educational purposes. They are available to all audiences and lead visitors to experience new sensations and emotions, based on the permanent exhibition that covers geological and mining issues.

There is a lot more to see, hear and experience during a visit to the São Pedro da Cova Mining Museum.

INFORMATION ABOUT VISITS

Location:
Rua de Vila Verde, 253
4510-457 São Pedro da Cova

Booking:
Guided tours must be booked in advance at:
www.fanzeres-saopedrodacova.pt/index.php/mm/atuais
Required, at least 3 days in advance (subject to availability)

Booking contacts:
São Pedro da Cova Mining Museum
Tel.: +351 935 663 998
+351 227 666 192
Email: museu.mineiro@fanzeres-saopedrodacova.pt

Visiting days:
Tuesday to Saturday,
from 10.00 am to 12.30 pm
and from 2.00 pm to 5.30 pm.
Closed: Sundays, Mondays,
and public holidays.

Number of Visitors: Min. 3 - Max. 25

Languages: Portuguese + English

Duration of the visit: 45 min.

If you're looking for additional activities, the duration varies depending on the activity

Shop: Yes

For more information, please visit:
www.fanzeres-saopedrodacova.pt/index.php/mm/visita-me



GONDOMAR



TOPÁZIO Industrial Heritage of Silversmithing

Ferreira Marques & Irmão is a Portuguese company with 150 years of history in the art of creating and producing silver pieces. The factory, located in Gondomar, spans a total area of 8,000 m² and has the capacity to produce around 30,000 pieces per year, covering all phases of development and artisanal production under one roof.

Every piece that leaves the Topázio factory tells a story. It starts as an idea, is captured in a sketch, and then embarks on a journey through the hands of skilled artisans. From a noble but raw silver sheet, each piece is shaped, soldered, chiseled, and meticulously finished with passion, care, and precision, resulting in true works of art. Topázio is a premium brand of silver and silver-plated objects.

The Topázio collection, with thousands of preserved molds, reflects the soul of over 147 years of heritage without compromising its roots. With an eye toward the future, this centenary brand integrates today's trends with traditional forms and techniques, combining the know-how of its artisans passed down from generation to generation with innovation in equipment and processes, such as 3D digitization and prototyping, laser engraving, controlled galvanic processes, and anti-oxidation coating, creating unique pieces across all product categories. The creation of pieces with undeniable symbolic and artistic value transforms each object into a witness of unique, memorable moments that span generations.

INFORMATION ABOUT VISITS

Location:
Rua Capela da Lagoa, 463
4420-402 Valbom - Gondomar

Visit Scheduling:
Mandatory with a minimum of 5 days' notice (subject to availability)

Contact for scheduling:
Topázio - Ferreira Marques & Irmão
Phone: (+351) 969347124
- Vânia Nogueira
Email: vania.nogueira@topazio.pt

Visiting days:
Tuesday to Friday (except holidays and vacation periods)

Hours: 10:30 AM - 12:30 PM /
2:00 PM - 4:00 PM
Closing time: 6:00 PM

Number of visitors: Min. 10 visitors
- Max. 50 visitors

Minimum age: Not applicable

Languages: Portuguese

Visit duration: 1 hour

Store: Yes

For more information, please visit:
www.topazio1874.com



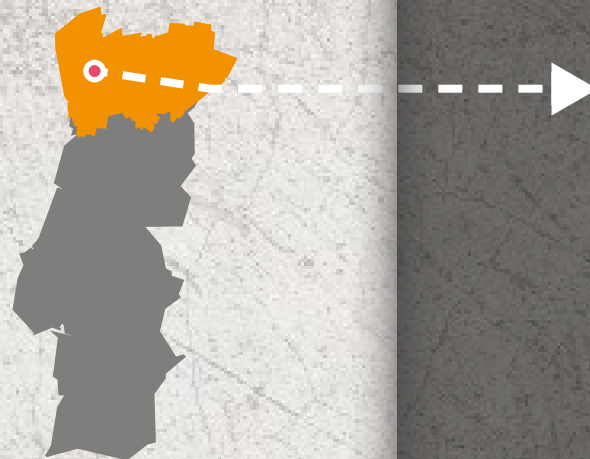
GONDOMAR

Topázio, Tradition in Modern Times.



Grupo Dinamizador
Rede Portuguesa de

**turismo
industrial**



GUIMARÃES

Guimarães is defined by its historical past and the construction of its future, grounded in the work, dedication, and entrepreneurship of dreamers who now achieve milestones that carry our name beyond borders.

A strong, robust industry, built by resilient and visionary people with values rooted in quality, innovation, and trust, attracting other visionaries and dreamers in search of inspiration so that they, too, can add chapters to their own stories and to ours.

The history of the textile industry in Guimarães fades into the threads of time, anchored in an ancient and industrious tradition of flax processing, which generated a commercial dynamic in which Guimarães and Porto were key centers in a geographically expansive trade network.

The existence of fertile lands, a hardworking population, and abundant water resources made the Guimarães region an ideal location for the rise of an industry that remains one of the region's most important today. Spinning and weaving, linked to the self-sufficiency of rural life, emerged as natural complements to agriculture in the region, largely as female-driven work that took advantage of downtime in farming cycles to process flax or wool.

Guimarães holds a prominent place as the center of national cutlery. References to the cutlers of Guimarães appear in the 15th and 16th centuries, and a "Price and Wage Regulation" from Guimarães in 1552 attests to the prosperity of this industry in the city. The cutlers' charter only emerged in 1778, mentioning the types of objects produced at the time.

FEEL THE BEAT OF GUIMARÃES' INDUSTRY
- SEE HOW IT'S DONE... WELL DONE!

www.visitguimaraes.travel/turismo-industrial

BELO INOX

Belo Inox, one of the most prestigious Portuguese table cutlery factories, is headquartered in the capital of Portuguese Cutlery, Caldas das Taipas – Guimarães.

With over 70 years of experience and 100% Portuguese capital, Belo INOX has always guided its path by quality, innovation, and artistry in the crafting of its products. Using only premium raw materials (18/10 STAINLESS STEEL), Belo Inox takes pride in its collection, which includes models from classic mid-to high-range designs to the most avant-garde and stylized, always employing its own designs and/or strategic partnerships with renowned Portuguese and European stylists and designers.

High-gloss, brushed, silver, gold, and “titanium” finishes are among the available options in an industry proud to offer customers a product 100% made in Portugal.

Endowed with skilled human resources, whose knowledge and experience are applied in the pursuit of perfection, the company combines this expertise with modern and versatile facilities and the continuous selection and renewal of production equipment to effectively respond to client demands.

With a dedication to quality in every item manufactured, Belo Inox relentlessly pursues excellence in its sector. The pursuit of broader horizons, the recognized merit of its brand, and constant commitment to its clients are the reasons Belo Inox earnestly seeks trust from consumers.

INFORMATION ABOUT VISITS

Location:
Gandra Industrial Zone – Barco S. Cláudio
4805-017 Guimarães
GPS: 41°30'28.0"N 8°19'54.8"W

Visit Scheduling:
5 days in advance and subject to availability

Contact for scheduling
Tel.: (+351) 253 576 165
Email: geral@beloinox.pt | mariajoao@beloinox.pt | isabelfreitas@beloinox.pt

Visiting Days: Monday to Thursday
Schedule: By appointment

Number of visitors:
Min. 4 | Max. 15 people
Languages: Portuguese and English
Visit Duration: 30 to 45 minutes
Factory Store: No, but visitors can place orders to be delivered to a specified address
Showroom: Yes
Accessible for people with specific needs:
No

Website for more information:
www.beloinox.pt



GUIMARÃES



COELIMA

Since 1922, Coelima has marked the history of the national textile industry from its very beginnings. Through the high quality of its raw materials and commitment to values such as quality, respect for people and the environment, trust, integrity, innovation, and design, Coelima has earned a prominent position in the market.

With over 100 years of experience, Coelima is an example of tradition combined with modernity. The company blends ancestral techniques with the latest technologies to create superior quality products that meet the needs of its customers worldwide.

Coelima is more than a textile company; it is a trusted brand representing the best of Portuguese textile industry. Its dedication to quality, innovation, and sustainability ensures that its products are appreciated across generations.

INFORMATION ABOUT VISITS

Location:
Rua do Trabalhador Têxtil, 436
4835-360 Guimarães
GPS: 41°25'31.6"N 8°21'36.9"W

Visit Scheduling:
5 days in advance and subject to availability

Contact for Scheduling:
Tel.: (+351) 969 395 041
Email: isalia.alves@mabera

Visiting Days:
By appointment
Number of Visitors:
Min. 10 | Max. 15 people
Languages:
Portuguese, English, Spanish, and French
Visit Duration: 1 hour
Factory Store: Yes
Showroom: Yes
Accessible for People with Specific Needs:
No

Website for More Information:
www.coelimastore.pt | www.mabera.pt

GUIMARÃES



FILASA

Founded in 1986, Filasa quickly became a major reference in the spinning sector, both nationally and across Europe. A synonym for quality in products and services, FILASA centers its entire strategy on its clients, developing tailored solutions that enable them to create value and continuously innovate in response to the demands of today's textile market.

As part of the Lasa Group, one of Europe's leading textile groups, Filasa operates within a 30,000m² industrial area that encompasses multiple capabilities, including spinning, twisting, dyeing, yarn printing, logistics warehousing, energy cogeneration, and wastewater treatment.

INFORMATION ABOUT VISITS

Location:
Rua da Madalena, nº1957
4835-511 Nespereira
GPS: 41°24'00.9"N 8°19'08.6"W

Visit Scheduling:
7 days in advance and subject to availability

Contact for Scheduling:
Tel.: (+351) 253 560 700
Email: lasa.geral@lasanet.pt

Visiting Days:
By appointment
Number of Visitors:
Min. 5 | Max. 15 people
Languages:
Portuguese
Visit Duration: 1 hour
Factory Store: No
Showroom: Yes
Accessible for People with Specific Needs:
No

Website for More Information:
www.filasa.pt

GUIMARÃES



JORDÃO

Founded in 1982, JORDAO® is a leading brand in the design and production of food preservation and display equipment, both refrigerated and heated, for commercial spaces of various sizes. Specializing in standard and customized equipment for the Food Retail and Horeca channels, JORDAO serves everything from supermarkets and convenience stores to cafes, ice cream parlors, and restaurants.

With a mission to create solutions that blend innovation, optimal product presentation, and low energy consumption, JORDAO's philosophy is to evolve by identifying market trends and leading in the application of advanced technologies and materials for superior performance, sustainability, and captivating aesthetics.

In 2019, the company launched the JORDAO INNOVCOOL® brand, which pushes the boundaries of creativity and innovation. Utilizing cutting-edge technology and artificial intelligence, this brand develops solutions aimed at enhancing in-store experiences, advancing sales operations, driving digital transformation, and promoting sustainability and energy efficiency. Since 1982, JORDAO® has developed innovative display and preservation solutions for globally recognized brands, meeting the unique specifications of each business, enhancing the buyer experience, and improving business operational efficiency.

INFORMATION ABOUT VISITS

Location:
Parque Industrial, Pav. E1
4805-661 Guimarães
GPS: 41° 27' 50" N | 8° 20' 10" W

Visit Scheduling:
Prior booking required,
subject to availability

Contact for Scheduling:
Email: cool@jordao.com

Visiting Days:
By appointment

Number of Visitors:
Min. 6 | Max. 12 people

Languages:
Portuguese, Spanish, English, and French
Visit Duration:
Between 45 and 60 minutes
Factory Store: No
Showroom: Yes
Accessible for People with Specific Needs:
No

Website for More Information:
www.jordao.com



GUIMARÃES



How cool are you?

LAMEIRINHO

LAMEIRINHO is a Portuguese, family-owned company founded in 1948. With over 75 years of knowledge, experience, and recognition in the home textile sector, it has become a prominent name. Established by Joaquim Martins Coelho Lima, the father of the current Chairman of the Board, the company has benefited from the strong dedication and commitment of the Coelho Lima family, one of the most traditional textile families in Portugal. LAMEIRINHO stands out in the home textiles sector both nationally and internationally.

INFORMATION ABOUT VISITS

Location:
Rua do Lameirinho, nº710
Selho S. Jorge (Pevidém)
4835-326 Guimarães
GPS: 41°25'11.7"N 8°21'33.3"W

Visit Scheduling:
10 days in advance and subject to availability

Contact for Scheduling:
Tel.: (+351) 253 422 200
Email: paula.costa@lameirinho.pt

Visiting Days:
Tuesday to Thursday from 9:30 am–12:30 pm and 2:00 pm–5:00 pm (excluding July, August, and September)

Number of Visitors:
Min. 5 | Max. 20 people
Languages: Portuguese and English
Visit Duration: 1 hour 30 minutes
Factory Store: Yes
Showroom: Yes
Accessible for People with Specific Needs: Yes

Website for More Information:
www.lameirinho.pt

GUIMARÃES



LASA

Founded by Armando da Silva Antunes in 1971, Lasa initially focused on selling handkerchiefs and kitchen cloths. By 1980, the company specialized exclusively in producing bath towels. Over the last 50 years, Lasa has acquired and established additional companies, further consolidating its operations. All LASA Group subsidiaries are located in northern Portugal, in Guimarães, the heart of the textile industry. We continually invest in technology, methods, and training for our 600+ employees who work within an approximately 40,000 m² area. The sustainable growth of each subsidiary has contributed significantly to the success of the LASA Group.

INFORMATION ABOUT VISITS

Location:
Estrada Nacional 105, Nº 3344
4835-517 Nespereira
GPS: 41°23'59.6"N 8°19'24.7"W

Visit Scheduling:
7 days in advance and subject to availability

Contact for Scheduling:
Tel.: (+351) 253 560 700
Email: lasa.geral@lasanet.pt

Visiting Days: By appointment

Number of Visitors:
Min. 5 | Max. 15 people
Languages: Portuguese
Visit Duration: 1 hour 30 minutes
Factory Store: Yes
Showroom: Yes
Accessible for People with Specific Needs:
No

Website for More Information:
www.lasa-group.com

GUIMARÃES





Grupo Dinamizador
Rede Portuguesa de

**turismo
industrial**



MACEDO de CAVALEIROS

The municipality of Macedo de Cavaleiros has been recognised by UNESCO three times. The 'Caretos' of Podence, the Terras de Cavaleiros Geopark, and the Transboundary Biosphere Reserve of the Iberian Plateau are three distinctive symbols of the municipality, showcasing its extensive natural and cultural richness. The distinctions awarded by UNESCO are just another way of acknowledging the town's rich heritage. Besides contributing to the development of the territory and the local economy - particularly by attracting more visitors and enhancing the tourism activities, they carry with them the responsibility of protecting, preserving and promoting heritage, ensuring it for future generations.

Focusing on Real Filatório de Chacim and the Murçós Mines, this territory aims to increase and diversify the number of museums linked to former industrial complexes. This initiative provides visitors with Factory Tours related to production processes or connected to its historical and cultural past. Explore your senses and visit us!

www.cm-macedodecavaleiros.pt/pages/218

Murçós Mines

The former Murçós mining area is located in the parish of Murçós, municipality of Macedo de Cavaleiros and district of Bragança, about 1.5 kilometres southwest of the village of Murçós.

The Murçós Mining Complex covers about 30 hectares and holds a heritage consisting of several open-pit mining fronts, a mining gallery, and buildings to support the mine's operation and washing facilities. In times past, these facilities were used for ore separation.

In Murçós, mining activity was mainly associated with the extraction of tungsten, a metal of great significance for the production of weaponry during World War II. The extraction of tungsten in the region dates back to 1940, but was suspended between 1976 and 1981.

INFORMATION ABOUT VISITS

Location:

Access via an unpaved road from the EM535-1, the road connecting Ferreira to Murçós.

Booking:

Required, at least 2 days in advance (subject to availability)

Booking contacts:

Location name
Largo da Estação s/n
5340-215 Macedo de Cavaleiros
Terras de Cavaleiros Geopark
Tel.: (+351) 278428101
Email: geral@geoparkterrasdecavaleiros.com

Visiting days:

Monday to Friday:
9.00 am - 5.00 pm (Advance booking)
Weekends and Public holidays (on request)

Number of visitors: Min. 10 (40 Max.)

Minimum age: 10+

Languages: Portuguese and English

Duration of the visit: 60 to 90 minutes

Shop: No

For more information, please visit:

<https://geoparkterrasdecavaleiros.pt/gloc/141/17>



MACEDO de CAVALEIROS



Real Filatório de Chacim

Built in 1788 by decree of Queen Maria I, the Real Filatório de Chacim was an attempt to revolutionise the silk industry, not only in the region of Trás-os-Montes but throughout the country. The Chacim factory was part of the plan by D. Rodrigo de Sousa Coutinho, 1st Count of Linhares, to boost silk production in Portugal. To achieve this, he invited the Arnaud family, silk merchants in Piedmont, to introduce an innovative technology at the time - the round silk mill.

The innovative nature of this industrial venture lay in the Piedmontese silk mill, which consisted of a complex machine for spinning silk thread.

The round silk mill, originating from the Italian city of Lucca and documented since the 13th century, produced high-quality twisted silk threads with hundreds of spindles in a short amount of time.

That year, the Arnaud family settled in Chacim, where, under their guidance, they developed the Real Filatório and introduced the Piedmontese method in silk manufacturing.

In the 1820s, the Filatório de Chacim fell into decay, and the Arnaud family eventually abandoned the project.

The Interpretive Centre keeps material remains of that silk mill. The Filatório de Chacim is, therefore, the monument that brings the history of the silk industry to life, depicting the transition from old methods to more modern ones practiced in Europe.

In the 1990s, the Filatório de Chacim became part of the Silk Route along with the regions of Como (Italy), Nîmes (France), Bursa (Turkey), Barcelona (Spain), Macclesfield (Great Britain), and Soufli (Greece).

INFORMATION ABOUT VISITS

Location:

Real Filatório de Chacim
Interpretive Centre and Ruins
of the Real Filatório de Chacim
Rua do Bairrinho
Chacim, Macedo de Cavaleiros
41°28'11.8"N 6°54'12.3"W

Booking:

Required, at least 1 day
in advance (subject to availability)

Booking contacts:

Macedo de Cavaleiros
Municipal Museum Network
Tel.: (+351 278097875)
Email: museu@cm-macedodecavaleiros.pt
Tourist Office
Tel.: (+351 278099166)

Visiting days:

Visits booked in advance

Number of visitors: Min. 1 - Max.

Minimum age: not applicable

Languages: Portuguese and English

Duration of the visit: 60 minutes

Shop: No

For more information, please visit:

<https://www.cm-macedodecavaleiros.pt/pages/217>



MACEDO de CAVALEIROS





Grupo Dinamizador
Rede Portuguesa de

**turismo
industrial**



MARCOdeCANAVESES

The Industrial Heritage offer in Marco de Canaveses inevitably involves the extractive industry. A visit to the Stone Museum allows you to delve into the history of the local men connected to the extraction and trading of granite and its derivatives. These men, with chisel in hand, sculpt an entire artistic universe. This is a vital resource for the economic and social sustainability of the territory, as well as for the enhancement of the business fabric, making a decisive contribution to its expansion. Here, you will wander through various colours and shapes, along cobbled streets, sunny houses, fountains, alongside numerous monuments that showcase the skilled art of working with stone.

However, this journey into the past won't be complete without first discovering the unique story behind the delicious cookies of Fábrica Duriense, an authentic experience that will surely delight your taste buds. A venture that has already crossed borders, with its recipes being savoured on other continents. A business and a legacy that Mariana and João inherited from their grandparents and have been able to value, with a profound respect for authenticity and quality. From an early stage, they welcomed visitors, always with a warm and enthusiastic hospitality. Yes, they stand out in the region and are a valuable attraction, a living industry that deserves recognition.

The industrial heritage offer in Marco will be more comprehensive in the future, including other sectors that will complement the sites of this tourist destination, bringing together everything you've always dreamed of. Visit us and see for yourself!

<https://visit.marcodecanaveses.pt/>

Duriense

Fábrica Duriense - Indústria de Biscoitos, Lda. was founded in 1956 by the couple Joaquim Ribeiro and Elisa Coutinho, making a significant contribution to employment and the economic dynamics of the agri-food sector in Marco de Canaveses. Deliciously irresistible and crunchy, these regional biscuits are produced with the utmost precision, quality, and hygiene, values that have prevailed from day one and accompany the brand to this day. A visit to the manufacturing process, focused on the sustainability of resources, reveals a well-preserved legacy that is now in its third generation.

Originally made by hand in wood-fired ovens, Chocolate Pinecones, Coconut Rings, Orange Tongues, and Lemon Biscuits are now joined by new recipes, blending traditional craftsmanship with modern production methods to meet market demands.

Mariana and João promise to continue this beautiful love story, inviting you on a journey back in time to savour the aroma of freshly baked cookies with chocolate or port wine and cinnamon. The values of their grandparents endure over time, a commitment upheld to ensure that the experience will always be sweet and unforgettable. A visit to Fábrica Duriense brings you into contact with the best Industrial Heritage in our region, a memorable living Factory Tours that can be complemented with a visit to the Church of Soalhães, probably the most beautiful church in Portugal.

INFORMATION ABOUT VISITS

Location:
Rua de Eiró, 503
4634-738 Soalhães, Marco de Canaveses

Booking:
Required, at least 8 days
in advance (subject to availability)

Booking contacts:
Fábrica Duriense
Tel.: +351 255 531 187
Email: geral@fabricaduriense.pt

Visiting days:
Summer:
7.30 am to 12.30 pm - 2.00 pm to 6.30 pm
Closed: Friday, Saturday and Sunday
Winter:
7.30 am to 12.30 pm - 2.00 pm to 6.30 pm
Closed: Friday, Saturday and Sunday
(public holidays and vacations on request)

Number of visitors: Min. 5 - Max. 15
Duration of the visit: 30 min.
Languages: Portuguese + Spanish + English
Shop: Yes

For more information, please visit:
www.duriense.com

MARCOdeCANAVESES



Taste the best regional confectionery at Duriense



Stone Museum

The Stone Museum is a municipal museum located in Alpendorada - Marco de Canaveses, close to the granite extraction, transformation and trading industries. It is housed in a beautiful building - a school from the 'Estado Novo' era, where stone engages in a vibrant dialogue: through its long-standing relationship with humans; serving as a tool for the arts and as the foundation of local wealth. It was inaugurated on 6 September 2009, and celebrates granite and the work of the people who, since time immemorial, have made the extraction, transformation and trade of stone the guarantor of their economic sustainability and one of the main development drivers in Marco de Canaveses, especially in the lower part of the municipality. Visitors will find three different sections, developed in a lively dialogue: 'Man and Stone', 'Stone in Arts', and 'Stone and Local Development'.

It's worth noting that the Marco de Canaveses Stone Museum is integrated into the 'Route of Mines and Points of Mining and Geological Interest of Portugal.' A collaborative, promotional and inspiring project that brings together Museums, Foundations, Living Science Centres, Geoparks and Universities, following an 'open museum' logic. Here, the stone celebrated by so many poets engages in a vibrant dialogue: through its long-standing relationship with humans; serving as a tool for the arts; and as the foundation of local wealth. Here, the stone that flows in the veins of this town and municipality is a monument to culture. So that everyone can claim it as their own. And to foster a collective sense of belonging. In stone and culture.

INFORMATION ABOUT VISITS

Location:
Avenida de São João, 900
4575-029 Alpendorada, Várzea e Torrão

Booking:
Required for a guided tour,
at least 5 days in advance
(subject to availability)

Booking contacts:
Email:
museudapedra@cm-marco-canaveses.pt

Visiting days:
Monday to Saturday:
9.00 am-12.00 pm / 2.00 pm-5.00 pm
Saturday, Sunday, and Public Holidays
booked in advance

Number of visitors: Min. 1 Max. 25

For more information, please visit:
<https://roteirodeminas.dgeg.gov.pt/>
visit.marcodecanaveses.pt

MARCO de CANAVESES



The Marco de Canaveses Stone Museum is much more than meets the eye.





Grupo Dinamizador
Rede Portuguesa de

**turismo
industrial**



MATOSINHOS

The Municipality of Matosinhos has been working to diversify its tourist offer by investing in new tourism products.

Alongside gastronomy, architecture and water sports, the municipality is now investing in Industrial Heritage, highlighting the historical and cultural heritage generated by the construction and development of the Port of Leixões in the industry, particularly the canning industry, in line with the National Tourism Strategy 2027.

In Matosinhos, the institutional partners participating in this Industrial Heritage project are: The Ramirez, Portugal Norte and Pinhais canneries, the Douro, Leixões and Viana do Castelo Port Authority, with Titan, and Superbock with Casa da Cerveja.

From the Titan of the Port of Leixões, which served as a lever for industrial development and a catalyst for the installation of all kinds of manufacturing units, to the *ex-libris* of the finest fish canning and beer production at both the national and international levels, Matosinhos now offers a qualified Industrial Heritage experience.

When visiting us, you can explore and understand the current and past manufacturing processes of these products, learn about the operation of the machinery used, and even taste various sampling options. These experiences reveal authenticity and enhance the identity of our heritage.

All of them are tourist attractions, contributing to the preservation of the city's memory and identity, as well as to the tourist and economic development of the municipality.

www.cm-matosinhos.pt/conhecer/turismo-industrial
www.matosinhoswbf.pt/p/turismoindustrial

Conservas Portugal Norte

Founded in 1912, Conservas Portugal Norte is a family-owned business with a long tradition in the production and sale of canned fish, namely sardines, tuna, mackerel and others, in a wide variety of sauces and presentations.

A tour of the Conservas Portugal Norte factory is a dive into the world of canned goods and a unique gastronomic experience!

This Factory Tour begins at the Companhia das Conservas shop, where you can learn all about the canning process, from the arrival of the fish and its preparation and seasoning to its cooking in the ovens, the filling of the cans with sauces, and employees skilfully wrapping the cans with paper.

At the end, you'll have the opportunity to taste our recreations of snacks made with the canned products available on the shop shelves, accompanied by a glass of wine or juice.

To top it all off, take the opportunity to seal a can with a pedal crimping machine from the 1940s.

INFORMATION ABOUT VISITS

Location:
Rua Sousa Aroso, 610
4450-287 Matosinhos

Booking:
Required for groups of 10 people or more

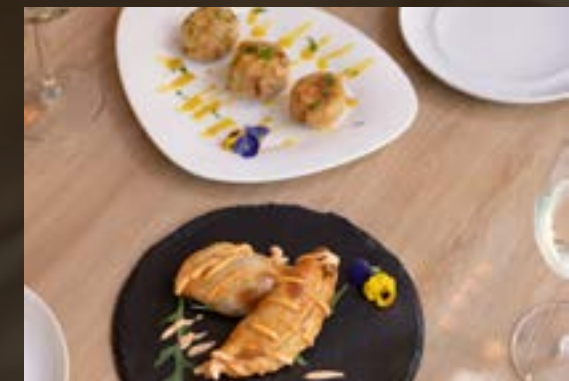
Booking contacts:
Tel.: +351 223 263 282
Email: visitas@portugalnorte.com

Visiting days:
Monday to Friday:
10.30 am - 11.30 am
and 2.30 pm - 4.00 pm
(subject to seasonal availability)

Number of visitors: Max. 15
Languages: Portuguese + English
Duration of the visit: 30/45 min.
Shop: Yes

For more information, please visit:
www.facebook.com/cpnportugalnorte/

MATOSINHOS



Conservas Ramirez

In Matosinhos, you can explore the history and taste the 'flavours' produced in the world's oldest operating fish cannery - Ramirez & C^o (Filhos), SA.

Founded in 1853 in the Algarve, it has been operating in Matosinhos since the late 1920s and relocated its headquarters to this municipality in 1950.

In addition to being at the forefront of technology, its innovative production unit, 'Ramirez 1853', includes a shop, an important museum area and an auditorium, all geared towards industrial heritage. You can't miss this tour Factory Tour, which can include a tasting or the opportunity to operate a can sealing machine.

At Ramirez, visitors embark on a journey and are amazed by an ocean of epic history filled with flavour: a five-generation family business; an industry that revolutionised the concepts of fish preservation, from the time when fish was salted, long before refrigerators were invented, to today's innovative techniques; an extensive and unique range of canned fish; a dozen century-old brands, and undeniable contributions to the development of the sector, such as the introduction of the easy-open ring.

INFORMATION ABOUT VISITS

Location:
Rua do Passadouro, 135
4455-953 Lavra

Booking: Not required except for pack 3, which must be booked 2 weeks in advance.

Booking contacts:
Tel.: +351 229 997 878
Email: ramirez@ramirez.pt

Visiting days:
Monday to Friday
(9.30 am - 12.30 pm / 3.00 pm - 5.30 pm),
no visits in August, public holidays
and maintenance periods.

Number of visitors: Min. 5 - Max. 25
pack 3 with a minimum of 15 visitors
Languages: Portuguese + English
+ French + Spanish

Duration of the visit:
pack 1 - 1h15 // pack 2 - 1h30
pack 3 - 2h00
Shop: Yes

For more information, please visit:
<https://ramirez.pt/>



MATOSINHOS

Conservas Pinhais

Located in the heart of Matosinhos, Pinhais & C^a has been a key company in the Portuguese canned fish industry since 1920 and is a global reference in the sector, particularly known for its expertise in sardine preserves, focusing on the vision and goal of offering the best canned sardines in the world.

Differentiation comes from production according to the traditional method: selecting and buying only the best fish, the freshness of its ingredients, homemade and secret recipes perfected over generations, and of course, the small - yet significant - details that only the dedicated employees, who are now part of the Pinhais 'family', know from handling the product for decades.

The Conservas Pinhais Living Museum Factory Tour begins with the transition from its typical façade to the building's beautiful entrance hall (and its surprising staircase), initiating a cycle of sensory experiences

that make this visit an immersive experience. The possibility of seeing the factory from the inside, accessing the production area where it is possible to observe the traditional working method, which is preserved as a legacy to this day, takes us back to 1920. After the packaging process, you can wrap your own tin, finishing with a unique tasting experience for your palate, featuring the iconic Pinhais and Nuri sardines.

With limited production, each can of the Pinhais and Nuri brands represents a special and unique masterpiece. Everything converges in a preserve of incomparable quality, which in some countries has become a cult product, symbolising the best moments in life.

Get to know the Pinhais family and witness all the care and dedication with which they have been working for over 100 years to offer what their customers call 'the best sardines in the world.'

INFORMATION ABOUT VISITS

Location:

Avenida Menéres, 700
4450-189 Matosinhos

Booking:

Not required, except in the case of events (corporate, educational and social)
Book in advance and save up to €2 on the ticket price. Save €2 by booking more than 30 days in advance. Save €1 by booking between 30 days and 2 days in advance.

Booking contacts:

Tel.: +351 222 434 275
+351 229 380 042

Email: factorytour@pinhais.pt
booking@pinhais.pt/comercial@pinhais.pt

Visiting days:

Monday to Sunday,
9.00 am to 6.00 pm

Visitors should arrive 15 minutes before the scheduled start of the tour.

Number of visitors:

Max. 15

Languages: Portuguese, English, French and Spanish (German with booking)

Duration of the visit: 90 min.

Shop: Yes

For more information, please visit:

<https://www.conservaspinhais.com/visitar-pinhais>



MATOSINHOS



Super Bock Casa da Cerveja

Super Bock Casa da Cerveja is a tour circuit open to the public, located within the Super Bock Group's Production Centre in Leça do Balio - Matosinhos.

Throughout this immersive experience into the world of beer, you'll learn all about the brewing process, from the raw materials that give rise to it to the production of the wort, through fermentation, and ending with the filling where you can hear the bottles clink.

There is also room to discover the history, highlights and curiosities of the Super Bock brand, one of the most renowned national brands. Highlights include a visit to the emblematic Copper Room, which was the first manufacturing room of this Production Centre, with its iconic copper boilers.

The senses are especially challenged in the final part of the tour, with the tasting of 2 types of beer paired with small delicacies.

INFORMATION ABOUT VISITS

Location:
Rua do Mosteiro
4466-955 Leça do Balio

Booking:
Required

Booking contacts:
Tel.: +351 932 642 120
+351 223 203 160
Email: info@superbockcasadacerveja.pt
reservas@superbockcasadacerveja.pt

Visiting days:
From Wednesday to Sunday,
at 10.30 am and 3.00 pm

Number of visitors: Max. 30
Minimum age: 18+
Languages: Portuguese + English + French
+ Spanish
Duration of the visit: 120 min.
Shop: Yes

For more information, please visit:
www.superbockcasadacerveja.pt

MATOSINHOS



Titan do Porto de Leixões

The Port of Leixões is made up of generations that, year after year, have shaped its history with cargoes coming and going, and passengers arriving and departing. Its origin is intertwined with the people of Matosinhos and their stories, both offshore and on the high seas, but also, inevitably, with our giant 'Titan.'

This colossus of engineering and industry, a symbol of the strength and power of this port and a driving force behind the urban growth of the port area, continues to live up to its past as a symbol of the splendour and centuries-old history of Leixões. The 'Titans' of the Port of Leixões are, undoubtedly, great pillars of the history of Matosinhos. Unique in the world, the 'Titans' are monumental cranes that uniquely document the era of iron and steam-powered engineering and architecture. The 'Titans' were crucial in the construction of the Port

of Leixões, the largest engineering project undertaken in Portugal in the 19th century. For a big problem, only a 'titanic' solution will do.

The construction company, 'Dauderni & Duparchi', commissioned two gigantic and powerful cranes from the famous French workshop 'Fives', in Lille. With their almost 69 metres in length, weighing 420 tonnes, and towering up to about 17 meters in height, their designation as 'Titans' was well justified.

The 'Titans' are all the more important due to their value as privileged witnesses of the industrial age and iron architecture/engineering, and they are unique in the world.

The 'Titan' on the south side of the Port of Leixões has been rebuilt, featuring many of its original components, especially the mechanical parts. It can now be visited along its nearly 69 metres in length and 17 metres in height.

INFORMATION ABOUT VISITS

Location:

Titan de Leixões
APDL - Porto de Leixões
Molhe Sul do Porto de Leixões

Booking:

Not required

Booking contacts:

Tel.: +351 229 990 700
Email: correio@apdl.pt

Visiting days:

Fridays, Saturdays and Sundays:
visits start at 10.00 am
every hour at the hour
until 5.00 pm, except at
lunch time, 1.00 pm

Number of visitors: Max. 25

Minimum age: 10+

(if not accompanied by an adult)

Languages: Portuguese + English

Duration of the visit: 30 min.

Shop: No

For more information, please visit:

<https://titan-apdl.pt/>



MATOSINHOS





Grupo Dinamizador
Rede Portuguesa de

**turismo
industrial**



MELGAÇO

Melgaço, Portugal's northernmost municipality, is located on the border with Galicia and is less than two hours from Porto. Part of its territory is included in the Peneda-Gerês National Park, classified as a World Biosphere Reserve by UNESCO.

A lush green region typical of Minho, with strong and fertile vegetation, Melgaço takes pride in its beautiful historical, cultural and architectural heritage, nestled within the marvellous Peneda-Gerês National Park. Melgaço's natural resources, such as the Minho River, the Laboureiro River and the surrounding nature, invite you to engage in sports activities scattered throughout several places of rare beauty. It is a land rich in traditions, stories, legends and testimonies of past experiences, and offers a rich and tasty gastronomy.

It is also renowned for the excellence of the Alvarinho wine produced here, which once again reveals the close connection between the territory and the people who have inhabited it over time. They have always sought to extract the best values while unequivocally preserving it, maintaining some of the most beautiful landscapes in Portugal intact. The Minho River, its fishing grounds, its mountains, its historic villages, and so many other things you can see and do, will make your visit to Melgaço unforgettable!

Melgaço is one of the few municipalities in Portugal certified as a sustainable tourist destination. Nature, relaxation, history, heritage, gastronomy and adrenaline are some of the reasons to visit. Melgaço is one of those places that remain in your memory... Discover Melgaço.

www.discovermelgaco.pt

Queijaria Prados de Melgaço - We Cherish Happy Goats

Established where Portugal begins, and taking advantage of its privileged location, Prados de Melgaço draws inspiration from the heritage of the Portuguese cheese-making tradition, creating an authentic, original and unique goat cheese to enrich the variety of products from the region.

In Prados de Melgaço's goat farm, music plays all day long. Verónica Solheiro and Marco Sousa argue that only with calm and happy animals can one obtain quality milk to make the best cheese. The couple left the city to return to their hometown, and in 2015 they founded the first cheese factory in the region.

The 500 or so goats listen to oriental-inspired music and are massaged by a brush that rotates non-stop, as if they were in a Spa. This relaxation encourages milk production, resulting in high-quality goat cheese.

The visit to the cheese factory provides an opportunity to witness the milking process, interact with the goats, and tour the facility, tasting its delicious cheeses.

INFORMATION ABOUT VISITS

Location:
Quinta do Moinho,
Lugar de Malhagrilos
Prado - Melgaço
GPS: 42°06'10.8"N 8°15'38.5"W

Booking:
Required (24 hours in advance)
Booking contacts:
Tel.: +351 251414093
Email: geral@pradosdemelgaco.pt

Visiting days:
Monday to Sunday
Times to be agreed

Number of visitors: Max. 25
Languages: Portuguese + English
+ Spanish
Duration of the visit: 45 min.
Shop: Yes

For more information, please visit:
www.pradosdemelgaco.pt



MELGAÇO



Grupo Dinamizador
Rede Portuguesa de

**turismo
industrial**



OLIVEIRA de AZEMÉIS

Oliveira de Azeméis is a predominantly industrial municipality, hosting nationally and globally renowned companies in various sectors such as metalworks, moulds and plastic injection, footwear, the agri-food industry, among others.

In this context, Industrial Heritage is a way of promoting the AZEMEIS brand and its industrial heritage, providing visitors with a first hand experience of 'seeing doing' through interaction with the production techniques of the visited companies.

More than just a visit, Industrial Heritage in Oliveira de Azeméis aims to provide visitors with a comprehensive Factory Tour whenever possible, showcasing the entire value chain, from raw materials to the final product.

www.cm-oaz.pt/turismo.356/oaz_turismo_industrial.2473.html

Aspöck

Aspöck Systems is Europe's leading manufacturer of prefabricated lighting systems for all types of towed vehicles. From the concept to a ready-to-assemble product, Aspöck develops lighting solutions for trailers, agricultural machinery, automobiles, motorbikes and caravans.

INFORMATION ABOUT VISITS

Location:
Rua do Paraíso
Zona Industrial Rebordões - Apt. 131
3721-908 Vila de Cucujães
Oliveira de Azeméis

Booking:
Required, at least 5 days
in advance (subject to availability)

Booking contacts:
Oliveira de Azeméis Tourist Office
Tel.: +351 256 674 463
Email: turismo@cm-oaz.pt

Visiting days:
Monday to Friday (on request)

Number of visitors: Min. 5 - Max. 20
Minimum age: 12+
Languages: Portuguese
Duration of the visit: 60 min.
Shop: No

For more information, please visit:
www.aspoeck.com

OLIVEIRA de AZEMÉIS



Aspöck Systems, Illuminating roads for 45 years!



Atelier Paulo Neves

Born in Cucujães, Oliveira de Azeméis, Paulo Neves has always maintained a strong connection with nature through his work. He creates compositions using wood, stone, iron and various materials like plastics and synthetics, making him one of the best artists of his generation.

When he was seven years old and carved a piece of wood, and something resembling the moon emerged, he began to think that when he grew up, he would become a sculptor. The dream came true, and today, Paulo Neves is one of the most renowned names in contemporary Portuguese sculpture, with representation in various national and international collections.

The visit takes place in the sculptor's two workshops - the stone workshop in Santiago de Riba-Ul and the wood workshop in Cucujães.

INFORMATION ABOUT VISITS

Location:
Atelier: Quinta Neves
Rua António Francisco das Neves, 64
3720-773 Cucujães

Booking:
Required, at least 10 days
In advance (subject to availability)

Booking contacts:
Oliveira de Azeméis Tourist Office
Tel.: +351 256 674 463
Email: turismo@cm-oaz.pt

Visiting days:
Monday to Friday
(Public Holidays and Vacations on request)

Number of visitors: Min. 5 - Max. 20
Minimum age: Not applicable
Languages: Portuguese
Duration of the visit: 2 hours
Shop: Yes

For more information, please visit:
www.paulonevesescultor.com

OLIVEIRA de AZEMÉIS



One of the greatest names in contemporary Portuguese sculpture!



Berço Vidreiro

Oliveira de Azeméis has a long-standing significance in the glass industry. The moulds industry and the motivation to bring this historical heritage to life in the present culminated in the creation and revitalisation of 'Berço Vidreiro.' From the 16th century until the 1990s, the Covo Glass Factory and all the others that flourished here, notably Centro Vidreiro do Norte de Portugal, stood as a hub for significant production activities, bringing glass of great perfection and utility to all parts of the country. In 2007, driven by a collective desire to revive part of the history of glass and its narrative in Portugal, 'Berço Vidreiro' was set up in Casa das Heras, located in La Salette Park. The process is lengthy. It requires patience. And tolerance to heat. Here, temperature must be high, otherwise the glass will crack. Precision is an attribute of gesture. How many shapes, with a myriad of colours

inside, can a fireball take? And what can it be used for? Glass was once the driving force behind the city's economy, and the desire to 'resurrect' that historical heritage laid the foundation for the creation of this thematic museum. Visitors can witness, in loco, the birth of glass objects. The temperature, the raw materials, and the tools with which they're crafted. This demonstration is led by individuals connected to the artisanal craft of glassmaking. And visitors can buy the pieces that they just saw coming to life by the hands of the artisans. A must-visit destination that unveils the centuries-old process of glass production, the techniques employed, and the significance of this activity in the municipality.

INFORMATION ABOUT VISITS

Location:

Berço Vidreiro | Casa das Heras
Parque de La Salette
3720-291 Oliveira de Azeméis

Booking:

Required, at least 2 days
in advance (subject to availability)

Booking contacts:

Oliveira de Azeméis Tourist Office
Tel.: +351 256 674 463
Email: turismo@cm-oaz.pt

Visiting days:

Wednesday to Sunday, from 10.00 am
to 12.30 pm and from 2.30 pm to 6.00 pm
(Public Holidays and Vacations on request)

Number of visitors: Min. 1 - Max. 25

Minimum age: Not applicable

Languages: Portuguese, English and Spanish

Duration of the visit: approx. 30 min.

Shop: Yes

For more information, please visit:

https://www.cm-oaz.pt/oliveira_de_azeméis.1/berço_vidreiro.1579/berço_vidreiro.a318.html



OLIVEIRA de AZEMÉIS

The Berço Vidreiro workshop creates original and unique glass pieces!

Colmol

Colmol is a second-generation company established in 1972, which manufactures innovative, high-performance and comfortable sleep systems. Focused on innovation and the environment, all products from this brand are manufactured using organic components and without petrochemicals.

Every night, thousands of people around the world enjoy the restorative benefits of a good night's sleep, thanks to its innovative mattresses. From Europe and America to Asia, Colmol collaborates with the most demanding partners who share a commitment to provide consumers with the best possible value with the least environmental impact.

INFORMATION ABOUT VISITS

Location:
Zona Industrial das Cavadas,
Rua do Progresso, 281
3720-354 Oliveira de Azeméis

Booking:
Required, at least 5 days
in advance (subject to availability)

Booking contacts:
Oliveira de Azeméis Tourist Office
Tel.: +351 256 674 463
Email: turismo@cm-oaz.pt

Visiting days:
Monday to Friday (on request)

Number of visitors: Min. 5 - Max. 20
Minimum age: 12+
Languages: Portuguese, English
Duration of the visit: 60 min.
Shop: No

For more information, please visit:
<https://colmol.pt>



Colmol - The Best Mattress
for Our Rest!



Fábrica Novarroz Produtos Alimentares, S.A.

Novarroz is a Portuguese family-owned company, founded in 1979. However, the family's history in the rice business began a few years earlier, in the 1960s, in a small water mill located by the river, with a traditional and rudimentary production process. The strategy of continuous growth and improvement, along with various investments made over the past decades, positions Novarroz today as one of the leading rice producers in Europe, both in terms of production volumes and the quality of the manufacturing process.

Novarroz's ambition is to continue expanding its business, both by consolidating its markets and by developing new products to meet various trends, namely healthy eating, sustainability and convenience. Novarroz is deeply committed to enhancing the quality of life of its employees, not only within the corporate environment but also through support to the community, aiming for an improvement in personal well-being. This includes policies supporting charitable and sports institutions, health benefits, and other protocols for employees' families.

INFORMATION ABOUT VISITS

Location:
Rua da Moura, 43 - Adães
3720 - 581 UI | Oliveira de Azeméis

Booking:
Required, at least 5 days
in advance (subject to availability)

Booking contacts:
Oliveira de Azeméis Tourist Office
Tel.: +351 256 674 463
Email: turismo@cm-oaz.pt

Visiting days:
Monday to Friday (on request)

Number of visitors: Min. 5 - Max. 20
Minimum age: 12+
Languages: Portuguese, English
Duration of the visit: 60 min.
Shop: No

For more information, please visit:
www.novarroz.pt

OLIVEIRA de AZEMÉIS



RICE - Our passion, our world!



Ferpinta

Conceived with ambition, the FERPINTA Group was born 50 years ago in Portugal, in 1972, established as a limited company, FERPINTA S.A..

This is one of Portugal's largest and most versatile business groups. With initial investment in the steel sector, it grew and consolidated its international presence, becoming the largest Iberian manufacturer of steel pipes. The diversification of investments has always been a key strategy of its entrepreneurial management and, today, its areas of expertise encompass the Agricultural Equipment and Tourism sectors.

The Group is internationalised in over 50 countries, with direct investment in Spain, Angola, Mozambique, Guinea-Bissau, Ivory Coast, and the Democratic Republic of Congo. Employing more than 1,200 people, it is considered one of the most dynamic players in the Portuguese business landscape.

INFORMATION ABOUT VISITS

Location:

Rua 13 de Julho, 295
3720-011 Carregosa
Oliveira de Azeméis

Booking:

Required, at least 5 days
in advance (subject to availability)

Booking contacts:

Oliveira de Azeméis Tourist Office
Tel.: +351 256 674 463
Email: turismo@cm-oaz.pt

Visiting days:

Monday to Friday (on request)

Number of visitors: Min. 5 - Max. 10

Minimum age: 12+

Languages: Portuguese, English

Duration of the visit: 60 min.

Shop: No

For more information, please visit:

www.ferpinta.pt



OLIVEIRA de AZEMÉIS

The largest Iberian manufacturer of steel pipes!

Luis Onofre Luxury Portuguese Designer Shoes & Accessories

Luis Onofre is the creator who lends his name to the brand launched in 1999, but his family already had a history in the footwear industry since 1939.

Refined taste, a strong emphasis on details, and the use of the most exclusive and high-quality materials, have propelled the brand to become an icon in the realm of luxury brands. Each model is unique and exquisitely crafted to suit the most solemn occasions or simply everyday life.

The Luis Onofre brand is renowned worldwide, being present in all continents. The proof of this recognition is in the consistent presence in top-tier stores and being the choice of numerous celebrities and public figures around the world, such as Michelle Obama or Penelope Cruz.

INFORMATION ABOUT VISITS

Location:
Rua da Indústria, 77 - Lote 2
3720-251 Oliveira de Azeméis

Booking:
Required, at least 10 days
in advance (subject to availability)

Booking contacts:
Oliveira de Azeméis Tourist Office
Tel.: +351 256 674 463
Email: turismo@cm-oaz.pt

Visiting days:
Monday to Friday (on request)

Number of visitors: Min. 5 - Max. 10

Minimum age: 12+

Languages: Portuguese, English

Duration of the visit: 60 min.

Shop: No

For more information, please visit:
<https://luisonofre.com>

OLIVEIRA de AZEMÉIS



Molinological Theme Park

The Molinological Theme Park is a project dreamed up since 2000 which became a living museum in 2009. The region's cultural, patrimonial and landscape heritage demanded it, given the high number of water mills (around 300) throughout the municipality of Oliveira de Azeméis. Due to the industrialisation of milling and its subsequent abandonment, they were gradually falling into a state of disrepair. With profound interventions in the existing built heritage, including the restoration of machinery, houses, weirs and channels, it was possible to turn the MTP into a reality. Occupying an area of 30 hectares, the MTP is located in the parishes of UI, Travanca and Loureiro, along the UI and Antuã rivers. Located in the Portuguese Village of UI, a land of millers and bakers, a visit to the Mill and Bread Museum will allow you to see the milling of cereals and experience the atmosphere of

the water mills along the UI River up close. These handmade mills are a significant representation of the people of Oliveira, integrating their collective memory. Here, you can also learn about one of the activities that is deeply rooted in the parish, with over 200 years of history - the artisanal production of the UI Bread, one of the municipality's greatest gastronomic references. Within the MTP area there are two hiking trails that connect the groups of mills that make up the park, offering visitors a journey into the past. In addition to the customs and traditions linked to the parish's trades, you can enjoy magnificent landscapes and explore the vast fauna and flora along the trails.

INFORMATION ABOUT VISITS

Location:

Rua da Ponte da Igreja
3720-604 UI | Oliveira de Azeméis

Booking:

Required, at least 3 days
in advance (subject to availability)

Booking contacts:

Oliveira de Azeméis Tourist Office
Tel.: +351 256 674 463
Email: turismo@cm-oaz.pt

Visiting days:

Tuesday to Sunday
(Public Holidays and Vacations on request)

Number of visitors: Min. 5 - Max. 20

Minimum age: Not applicable

Languages: Portuguese and English

Duration of the visit: 45 to 60 min.

Shop: Yes

For more information, please visit:

https://www.cm-oaz.pt/turismo.356/o_que_fazer.510/parques_e_jardins.1377/parque_tematico_molinologico.1601/a5263.html



OLIVEIRA de AZEMÉIS

Water mills, millers and bakers gathered in a unique place!

Polisport

The Polisport Group, founded in 1978, was born out of the passion of its CEO, Pedro Araújo, for the world of two-wheelers. Presently, the Polisport Group has a strong presence in the manufacturing market of products related to the two-wheeler industry. Focused on internationalisation, innovation and quality customer service, the group has expanded its portfolio of customers and markets, and is now present in more than 72 countries around the world.

The Polisport Group is a global leader in baby carriers, specialising in bicycle and motorbike accessories, and has established itself as a market leader with a growing international presence. The Group exports 97% of its production and its portfolio includes 9 brands. It currently has 530 employees spread across 5 companies that cover, for the most part, the entire production process of the Group - Polisport

Plásticos S.A, Polinter Plásticos S.A, Polisport Molds, Lda, Polisport Brasil, and Polipromotion.

In addition to its strong investment in its own brands, its capacity for innovation has been recognised with several awards, including a Red Dot. The quality of service and technical expertise have enabled Polisport to attract important customers, fostering long and stable partnerships in the field of original equipment and private label manufacturing. In the motorcycle industry, they collaborate with prestigious brands such as KTM, Husqvarna, Triumph, Gas Gas, Yamaha and Wunderlich. In the bicycle and automotive products sector, we highlight the brands BeSafe, Burley and DECATHLON.

INFORMATION ABOUT VISITS

Location:
Rua Comendador António da Silva Rodrigues, 100
3720 Oliveira de Azeméis

Booking:
Required, at least 5 days in advance (subject to availability)

Booking contacts:
Oliveira de Azeméis Tourist Office
Tel.: +351 256 674 463
Email: turismo@cm-oaz.pt

Visiting days:
Monday to Friday (on request)

Number of visitors: Min. 5 - Max. 20
Minimum age: 12+
Languages: Portuguese, English
Duration of the visit: 60 min.
Shop: No

For more information, please visit:
www.polisport.com/pt



OLIVEIRA de AZEMÉIS



Passion for the two-wheelers world!



reddot award 2017
best of the best

Schmidt Light Metal Group

Founded in 1989, the Schmidt Light Metal Group specialises in aluminium die-casting, producing components for engines, gearboxes, differentials and chassis in the automotive industry. Approximately 20% of all cars produced in Europe each year have components manufactured by SLM.

INFORMATION ABOUT VISITS

Location:
Rua Manuel da Costa Correia Júnior, 541
3720-502 Santiago de Riba-UI
Oliveira de Azeméis

Booking:
Required, at least 5 days
in advance (subject to availability)

Booking contacts:
Oliveira de Azeméis Tourist Office
Tel.: +351 256 674 463
Email: turismo@cm-oaz.pt

Visiting days:
Monday to Friday (on request)

Number of visitors: Min. 5 - Max. 20
Minimum age: 16+
Languages: Portuguese, English
Duration of the visit: 60 min.
Shop: No

For more information, please visit:
<http://www.performing.solutions/>

OLIVEIRAdeAZEMÉIS



We produce parts for fantastic cars!



Silampos

Silampos was founded in 1951 in Cesar, in the municipality of Oliveira de Azeméis. It manufactures stainless steel tableware for the kitchen and table, catering to both the domestic and HORECA sectors. Its flagship products are pressure cookers, the ex-libris of the company. It was Silampos that, in the 1960s, introduced the first pressure cooker in Portugal. Some still remember the TV advert featuring Carochinha and João Ratão. The stainless steel kitchenware was introduced by the brand to the domestic market in the 1970s, and the HORECA range was designed in 2004 to meet the needs of chefs. In 2005 it introduced Multidisc cookware, an advanced technology.

It leads the Portuguese market and exports to around 50 countries. Quality is a core concept throughout the Silampos organisation, present from the creation of its products to the support given to customers/consumers, as evidenced by the certification of its Quality, Environment and Energy system. Market recognition and an emphasis on design have earned the company several awards from official entities.

Visitors will have the opportunity to witness various stages of the production process at the factory, from raw materials processing to product packaging for the market, ending with a visit to the showroom.

INFORMATION ABOUT VISITS

Location:
Rua das Cortinhas, 301
3700-605 Cesar | Oliveira de Azeméis

Booking:
Required, at least 30 days
in advance (subject to availability)

Booking contacts:
Oliveira de Azeméis Tourist Office
Tel.: +351 256 674 463
Email: turismo@cm-oaz.pt

Visiting days:
Working days from Monday to Friday

Number of visitors: Min. 10 - Max. 16

Minimum age: 12+

Languages: Portuguese and English

Duration of the visit: 2 hours (estimated)

Shop: No

For more information, please visit:
www.silampos.pt



Silampos, for Life!

Simoldes

A unique Factory Tour inviting you to explore the secrets of moulds manufacturing, from its inception to the latest additive technologies, as well as the injection and processing of plastic parts under serial conditions for major automotive brands, among others...

Discovering the history of Simoldes
Since its foundation in 1959, Simoldes has been a pioneer in the moulding and thermoplastic injection industry. Its history is one of perseverance, dedication and innovation, which you'll have the opportunity to explore during your visit.

Processes that Turn Ideas into Reality
Discover how experts transform conceptual designs into tangible reality, using cutting-edge technology and the latest production practices. Visitors will have the opportunity to take a close look at each stage of the process, from the initial design to the final product.

Innovation, Sustainability, and Tradition

It's not just a company with decades of tradition, but also one that is committed to innovation and sustainability. Throughout the visit, you will discover how Simoldes embraces cutting-edge technologies to improve efficiency and reduce environmental impact, while collaborating on various research and innovation projects with its customers and partners. Its efforts to achieve more sustainable practices form an integral part of its present actions and its vision for the future. Join in on this exciting journey to uncover the secrets of the Simoldes universe in Portugal and around the world, where history and sustainability meet innovation.

INFORMATION ABOUT VISITS

Location:

Rua Comendador Aº Silva Rodrigues, 100
3720-502 Santiago de Riba-Ul
Oliveira de Azeméis
N 40º 51.08.83' - W 08º 28.48.42'

Booking:

Required, at least 5 days
in advance (subject to availability)

Booking contacts:

Oliveira de Azeméis Tourist Office
Tel.: +351 256 674 463
Email: turismo@cm-oaz.pt

Visiting days:

2 times a month, from Tuesday to
Thursday

Number of visitors:

Min. 10 - Max. 20
(larger groups can be divided
into subgroups)

Minimum age:

14+
Languages: Portuguese and English
(with support material also in other
languages, such as Spanish, French,
Polish, Czech, and German)

Duration of the visit:

1h30

Shop:

No

For more information, please visit:

www.simoldestoosl.com



OLIVEIRAdeAZEMÉIS

Where History and Innovation meet!

Vitorino Silva Coelho, Lda.

A family-owned footwear company with 40 years of existence. It relies on experience and the latest technology, enabling the manufacturing of various types of footwear, always with the highest quality. It currently has two separate production lines, one equipped with machines designed to manufacture more refined/elegant/feminine products, and another dedicated to more practical/sporty/comfortable footwear.

The company is physically divided into two spaces totalling around 4,000 m², each with a separate production line. The older facility has been in existence since 2008, and the newer one since 2016. These units are about 500 metres apart, allowing them to maintain the characteristics that differentiate them and the necessary specialisation for the production of different types of products, while also ensuring control and easy access to each of them.

INFORMATION ABOUT VISITS

Location:
Rua da Boavista, 207
3720-502 Oliveira de Azeméis

Booking:
Required, at least 10 days
In advance (subject to availability)

Booking contacts:
Oliveira de Azeméis Tourist Office
Tel.: +351 256 674 463
Email: turismo@cm-oaz.pt

Visiting days:
Monday to Friday (on request)

Number of visitors: Min. 5 - Max. 10
Minimum age: 12+
Languages: Portuguese, English
Duration of the visit: 120 min.
Shop: No

For more information, please visit:
www.vitorinocoelho.com

OLIVEIRA de AZEMÉIS





Grupo Dinamizador
Rede Portuguesa de

**turismo
industrial**



PAREDES

Paredes is a municipality with a strong tradition in woodworking dating back centuries. At the end of the 19th century, woodworking began to take its first steps in Paredes, and by the 20th century—especially from the 1940s to the 1980s—it had truly developed. This evolution has left us a rich heritage that we aim to preserve and promote, showcasing the diverse skills and craftsmanship involved in woodworking.

The art of woodworking requires passion, creativity, patience, and dedication—values embodied by the people of Paredes. Today, woodworking continues as the main economic activity of the municipality.

Our proposal is to give the general public, schools, and professionals an opportunity to discover the various forms of woodworking, along with the tools, techniques, and evolution of this art. We also aim to show the growth of the furniture industry, now the country's leading production center.

Paredes is home to large companies producing high-quality furniture for the world. We propose guided tours with different focuses: one to explore the origins of this trade through visits to small workshops specializing in carving, joinery, carpentry, sculpture, gilding, marquetry, turning, sawing, and weaving; and another to large industries such as CFPIMM. These tours offer visitors unique, hands-on experiences of each phase of the woodworking process.

All senses are engaged during these visits: Hearing – the sound of wood being cut; Sight – the transformation from log to chair; Smell – the scents of wood, glue, varnish, and solvent...; Touch – the warmth of wood. The art of woodworking awaits you. Come and discover it with us!

<https://festivaldeartesemmadeiradeparedes.pt/>

FENABEL

Fenabel specializes in crafting chairs—fascinating pieces of furniture with intricate designs.

A family business with roots in the early 20th century, Fenabel was born from the passion of two men, Abel Leite and Elías Dias, who produced chairs by hand in their home workshops. Originally competitors, they later united when their children, Mário Leite and Rosa Dias, married and continued the family legacy.

Fenabel was founded as a brand in 1992 by Mário Leite to pursue international markets.

In 2003, Fenabel entered a new era, launching the “FENABEL – The Heart of Seating” brand, which reflected the company’s dedication to chair-making and its core values.

Over three generations, Fenabel has established itself in both national and international markets, showcasing its products at fairs in Paris, Milan, Shanghai, Cologne, New York, and Las Vegas.

Today, Fenabel operates a new 12,000-square-meter production unit equipped with state-of-the-art machinery. The company continues to embody the family spirit, unity, and innovation instilled by its founders.

INFORMATION ABOUT VISITS

Location:

Via Rota dos Móveis 1, 624
4585-850 Rebordosa

Booking:

Minimum of 5 days in advance
(subject to availability)
Closed Periods:
August, Holidays, and Vacations
(by request)

Contact for Appointments:

Interactive Tourism Store of Paredes
Phone: (+351) 255788952
Email: turismo@cm-paredes.pt

Visiting Days:

Fridays during the day

Visitor Types: School Groups

Group Size: Min. 5 – Max. to be assessed

Minimum Age: 12 years

Languages: Portuguese, English, Spanish

Duration: Minimum 30 minutes (varies)

Store: No

Showroom: Yes

For more information, please visit:

<https://pt.fenabel.pt/>



PAREDES



LASKASAS

Laskasas is a company and brand with decades of experience, located in Porto, in northern Portugal, where time is dedicated to quality. They seek to combine a creative signature and high-quality design in everything they do, offering unique combinations of silhouettes and materials. Each piece is a journey through Portuguese craftsmanship, honoring the talent and skilled artistry of master artisans. They value the expertise poured into every piece, crafted with time and care, as what they cherish most is the uniqueness of handmade work.

INFORMATION ABOUT VISITS

Location:
Rua Alto do Facho, n.º 576
4585-831 Rebordosa | Paredes

Visit Scheduling:
Must be booked at least one week in advance (subject to availability)

Contact for Scheduling:
Contact Person: Veneranda Moreira
Phone: (+351) 224 153 558
Email: laskasas@laskasas.com

Visiting Days:
Monday to Friday

Number of Visitors: 1-20
Minimum Age: -
Languages: Portuguese and English
Visit Duration:
Between 50 minutes and one hour
Store: check the link: www.laskasas.com/pt/lojas_807.html

For more information, please visit:
www.laskasas.com/pt/

PAREDES



An Ode to Portuguese Talent!



MÓVEIS FIALHO

Sr. Fialho began his journey in woodworking at the age of 14 when his father asked if he wanted to be a “carver or a mechanic”. Choosing carving, he started his exploration of this craft at José Pereira’s company, where he learned from one of the best woodworkers of the time. His curiosity drove him to acquire art books from France, honing his skills to reach greater heights. He eventually established “Os Móveis Fialho” in 1980, initially focusing on carving and sculpture. From there, he moved on to another company, owned by Mr. J. Venda, and later continued on his own, freely pursuing his passion, interest, and drive to create.

His curiosity and desire to go further led him to acquire art books from France, which helped him develop his skills to a higher level. To this day, he continues to work independently, having founded the company “Os Móveis Fialho” in 1980. The company initially focused on carving and sculpture but later evolved, driven by experience and market demands, to produce styled furniture and restoration pieces in various types of wood, including rosewood. Currently, 98% of its production is destined for foreign markets, with exports throughout Europe, primarily to France and Spain.

INFORMAÇÕES PARA EFEITOS DE VISITAS

Localização:
Rua Quintã de Baixo, 117
4585-505 Rebordosa

Booking:
Minimum of 5 days in advance
(subject to availability)

Closed Periods:
August, Holidays, and Vacations
(by request)

Contact for Appointments:
Interactive Tourism Store of Paredes
Phone: (+351) 255788952
Email: turismo@cm-paredes.pt

Visiting Days:
Monday to Friday, once per month
(subject to availability)

Visitor Types: General Public
Group Size: Min. 4 – Max. 8
Minimum Age: 15 years
Languages: Portuguese, English
Visit Duration: 40 minutes (workshop only);
3 hours (workshop and carving atelier)
Store: No / **Showroom:** No

For more information, please visit:
<https://festivaldeartesemmadeiradeparedes.pt/>



Móveis Fialho - Where Hands of Skill and Knowledge Transform Wood!

PAREDES



CFPIMM

Center for Professional Training in the Wood and Furniture Industries

The CFPIMM is a public, non-profit institution established through an agreement between IEFP (Institute for Employment and Vocational Training) and AIMMP (Association of Wood and Furniture Industries of Portugal) to enhance human resources in the wood and furniture industries.

Endowed with a technical team with extensive training experience and supported by Trainers with pedagogical training and in-depth knowledge of the Industry, CFPIMM boasts high-quality facilities equipped with the most modern teaching tools and workshop equipment.

INFORMAÇÕES PARA EFEITOS DE VISITAS

Localização:
CFPIMM – Professional Training Center for the Wood and Furniture Industries
Rua Centro de Formação Profissional, 40
4580-806 Lordelo, Paredes, Portugal

Booking:
Minimum of 7 days in advance
(subject to availability)

Contact for Appointments:
Rafaela Cortez
Phone: (+351) 255 880 480
Email: rafaela.cortez@cfpimm.pt

Visiting Days:
Monday to Friday (weekdays)
Holidays and vacation periods subject to consultation, if applicable.

Group Size: Min. 1 – Max. 20
Minimum Age: Not applicable
Languages: Portuguese, English
Duration: 60 minutes
Store: No

For more information, please visit:
www.cfpimm.pt

PAREDES



CFPIMM – A story with a future!



Wewood Portuguese Joineryz

Wewood - Portuguese Joinery is a Portuguese brand specializing in the design, manufacturing, and export of timeless furniture, crafted to ensure aesthetics and functionality. Each piece is skillfully designed and made with love and meticulous attention to detail. The company's story began in 1964, when two brothers started working together in a small carpentry workshop in northern Portugal. Over the years, this workshop grew into the company Móveis Carlos Alfredo, which has specialized in the production and export of solid wood furniture for more than five decades.

The Wewood - Portuguese Joinery brand was established in 2012 by the second generation of the company's owners, following four years of dedicated effort to create a design house that honors its heritage. The brand is anchored in the principles of quality materials, durable construction, and timeless design.

INFORMAÇÕES PARA EFEITOS DE VISITAS

Localização:
Rua D. Afonso Henriques, 77
4585 - 322 Gandra, Portugal

Booking:
Minimum of one week in advance
(subject to availability)

Contact for Appointments:
Wewood - Portuguese Joinery
Phone: (+351) 224 114 050
Email: communication@wewood.eu

Visiting Days:
Monday to Friday

Group Size: 2 - 15
Minimum Age: Not applicable
Languages: Portuguese, English
Duration: 30 minutes to 1 hour
Store Location: Rua da Piedade n.º 80
4050-625 Porto, Portugal

For more information, please visit:
<https://festivaldeartesemmadeiradeparedes.pt/>

PAREDES



Furniture that Endures, Passing its Charm
from Generation to Generation!





Grupo Dinamizador
Rede Portuguesa de

**turismo
industrial**



PONTEdeLIMA

Located at the heart of Ribeira Lima, Ponte de Lima is one of the most typical towns in the Alto Minho region and is considered the oldest town in Portugal.

With a privileged and attractive geographical location, this municipality has a variety of resources and potential, surrounded by exceptional landscapes and featuring green nooks and spaces of unique, singular and harmonious beauty.

A land of poets, filled with history, it stands out for its rich culture and landscape, enhanced by the flavours of the local cuisine that bear witness to the heritage left by our ancestors throughout the centuries. The renowned 'Arroz de Sarrabulho à Moda de Ponte de Lima', harmonised with the excellence of its *Verde* wines, particularly the Loureiro and Vinhão varieties, which in this region attain world-class quality.

A legendary town, elevated by royal charter in 1125 by Queen Teresa, it was a crossing point for the Romans heading north of the Peninsula. Thousands of pilgrims passed and still pass through here, on their way to Santiago de Compostela, stopping off at the Pilgrims Hostel.

The seat of the municipality, it is embellished by the Lima River, the pride of the local people and a landmark in the tourism and environmental sectors. Its natural beauty is enhanced with the opulence of the manor houses and the historic centre that takes us back to its ancestry.

A land full of rusticity, between the river and the mountains, it influences the habits and customs of the population, also dedicated to local crafts, folklore, fairs, the stone industry, and the agri-food industry that ties us to industrial heritage. Also associated with this highly relevant type of tourism is the Portuguese Toy Museum, the only one of its kind in the country, featuring thousands of pieces that depict the history of toys manufactured in our country for 100 years. Representative of a certain social order and associated with historical and cultural factors, this space fosters and encourages learning and the (re)construction of knowledge in a playful and dynamic way, offering proposals rich in visual experiences and artistic creation. Leveraging projects related to the fundamental principle of stimulating play, it invites the public to visit this space of discovery and memory retrieval.

Come and discover this place filled with history, stories and memories of times gone by!

www.museuspontedelima.com
www.museuspontedelima.com/pages/1335

Portuguese Toy Museum of Ponte de Lima

Inaugurated in June 2012, the Portuguese Toy Museum is located in the noble building of Casa do Arnado, situated on the right bank of the Lima River, very close to Ponte de Lima's ex-libris - its Roman and medieval bridges.

This space offers various Factory Tours in a unique journey through the world of toys manufactured in Portugal, from the late 19th century to 1986. This chronological timeline was established based on the start of mass production of toys, i.e. industrial production, and ended on the date of Portugal's entry into the European Community. The itinerary begins with the permanent exhibition on the ground floor featuring 'Portuguese Manufacturers'.

This is followed by 'Portuguese Toy versus Foreign Toys', showcasing examples that highlight the dichotomy between foreign and Portuguese toys.

The narrative is only completed on the upper floor, following the evolutionary path of national manufacturing, trends, characteristics and functionalities.

The journey continues through the garden to the Model Room, the Playroom, the ARLO Room, and finally, the Temporary Exhibition Room.

The exit is through the shop where you'll find rare items and unique toys that you can take home with you.

The Portuguese Toy Museum thus asserts itself as a recipient, guardian and transmitter of a vast and valuable heritage. It also serves as a cultural space that promotes and encourages learning through the development of an educational service open to the entire community.

INFORMATION ABOUT VISITS

Location:
Casa do Arnado
Largo da Alegria, Arcozelo
4990-154 Ponte de Lima

Booking:
Required, at least 7 days
in advance (subject to availability)

Booking contacts:
Portuguese Toy Museum
Tel.: +351 258 240 210
Email:
mbp.geral@museuspontedelima.com

Visiting days:
Tuesday to Sunday, including public
holidays

Duration of the visit: variable
Languages: Portuguese + Spanish +
English + French
Shop: Yes

For more information, please visit:
www.visitepontedelima.pt/pt/turismo/museu-do-brinquedo-portugues/

PONTEdeLIMA

Portuguese Toy Museum of Ponte de Lima:
a journey into the world of industrial heritage.





Grupo Dinamizador
Rede Portuguesa de

**turismo
industrial**



PORTO

Used to seeing Porto as a city with an ancient commercial essence, open to the country and the world, especially since the 19th century, Porto has also asserted itself through its entrepreneurial and innovative side. These characteristics persist to the present day, highlighting its industrial nature.

From the design of blocks and streets, ruins or regenerated former factory facilities, old chimneys that remain standing in the city's profile, inscriptions on walls, ridges, manhole covers or fountains, there are many testimonies to the city's industrial activity, and even more so its memories, which are often reflected in the city's 19th-century layout as in its toponymy.

And the industrial activity developed in the city was quite diverse - textiles, metallurgy, milling, hat-making, pottery and ceramics, to name just a few - as were the areas in which it specialised over time.

Because history and heritage are built every day, this is an itinerary of Factory Tours through the multiple possibilities of visiting living spaces and active production facilities. It's a vast array of challenges that will take you to worlds as different as jewellery and printing, electric traction and transport, the beer and soap industries, as well as the scientific field. You'll find them everywhere, in the heartbeat of the city, ready to welcome you and share ancestral knowledge and traditions, full of originality, creativity and memories.

www.cm-porto.pt

Alcino Silversmith Since 1902

Art, tradition and quality are in our DNA. With 120 years of existence and already in our sixth generation, we have been rediscovering ourselves and projecting into the future with talent and creativity. We create decorative objects and silver jewellery collections inspired by elements of nature, which has always been our greatest source of inspiration. Join us on a journey into the world of silver art, where you can discover the jewellery, decorative pieces and significant symbols of sacred art, carefully crafted at the century-old Alcino factory, at the heart of Porto!

In this Factory Tour, you will be able to learn about the company's history, discover the workshop, interact with and watch our artisans in their creative process in loco, learn about various goldsmithery techniques (casting, silver rolling, moulding and chiselling), as well as visit the shop and showroom, where you can see the pieces on display in different environments, decorated with the goal of allowing visitors to build an idea of how the pieces would look in a room at their home.

INFORMATION ABOUT VISITS

Location:
Rua de Santos Pousada, 76
4000-478 Porto

Booking:
Required, at least 2 days
in advance (subject to availability)

Booking contacts:
Ourivesaria Alcino Silversmith
Since 1902
Tel.: +351 225 371 909
Email: store.alcino@alcino.com

Visiting days:
Working days: 10.00 am - 1.00 pm;
2.00 pm - 5.00 pm
(The workshop is closed on public
holidays and weekends. Annual vacation
periods will be announced in due time).

Number of visitors: Min. 1 - Max. 15
Duration of the visit: 30 to 45 min.
Languages: Portuguese + English
Shop: Yes

For more information, please visit:
<https://alcino.com/visitas-guiadas/>

PORTO



We create pieces of art that tell stories and eternalise moments



Nortada Craft Beer

Located in the centre of the iconic city of Porto, the Nortada craft brewery is one of the best-equipped in Europe. This is where we produce more than 500 thousand litres of beer every year, always with the finest ingredients.

Come and enjoy a beer lover's journey in one single spot! Learn all about the production process of this Portuguese craft beer and end your visit with a tasting of five refreshing beers. With or without dinner, come and enjoy a beer lover's experience in one single spot!

INFORMATION ABOUT VISITS

Location:
Rua de Sá da Bandeira, 210
4000-428 Porto
GPS: 41.14814, -8.60817

Booking:
<https://cervejanortada.pt/reservas/provas-tours/>
<https://feverup.com/m/104928>
Required, at least 2 days in advance (subject to availability)

Booking contacts:
Fábrica Nortada
Tel.: +351 910 213 693
Email: vitor.meirelles@fcportuense.pt

Visiting days:
Tuesdays, Thursdays and Fridays
Public Holidays and Vacations on request

Number of visitors: Min. 2 - Max. 20
Minimum age: 18+
Duration of the visit: 90 min.
Languages: Portuguese + English + Spanish
Shop: Yes

For more information, please visit:
<https://cervejanortada.pt/reservas/provas-tours/>
<https://feverup.com/m/104928>

PORTO



Beer that tastes like beer.



Museum of the Higher Institute of Engineering of Porto

The Museum of the Higher Institute of Engineering of Porto (ISEP) was created in 1999. This space was born out of a long-standing desire to bring together and display a precious collection of scientific and teaching instruments that clearly demonstrate the scientific and technical evolution of experimental teaching since the creation of the Industrial School of Porto, in 1852.

Here we can observe the significant technological advancements of the 19th century in various fields of knowledge.

In the field of Physics, we have instruments related to optics, electrostatics, hydrodynamics and acoustics, as well as Electrotechnics with electrical measuring devices, telegraphs and motors. In the field of Mining and Metallurgy, we highlight a German collection of furnace and equipment models associated with mine slags. In the field of Mechanics, there are models of steam engines and machine components, and in the Chemistry field we find precision scales and various laboratory utensils.

To explore this universe, the museum invites visitors to perform simple scientific experiments. We want it to be a fun and enriching moment, where you can learn a bit of science in a playful way, with the aim of better understanding the world around us.

INFORMATION ABOUT VISITS

Location:
Rua Dr Bernardino de Almeida, 431
4249-015 Porto

Booking:
Required, at least 5 days
in advance (subject to availability)

Booking contacts:
Museum of the Higher Institute
of Engineering of Porto
Tel.: +351 228 340 508
Email: museu@isep.ipp.pt

Visiting days:
Monday to Friday
09.30 am » 12.30 pm /
2.00 pm » 5.00 pm
Closed: Saturdays, Sundays and Public
Holidays or when its closure is
ordered by higher authority

Number of visitors: Min. 1 - Max. 20
Duration of the visit: 30 minutes (visit),
1h30 (visit + educational workshop)
Languages: Portuguese + English
Shop: No

For more information, please visit:
<https://www2.isep.ipp.pt/museu/>

PORTO

Playful hands
and scientific eyes



Porto Tram Museum

'Between the Lines - Reiventing a Place' is the exhibition that retells the history of trams in the city of Porto, starting from the history of the building that supported it.

The Massarelos Thermolectric Power Plant is a building with more than 100 years of history dedicated to the production and transformation of electricity. Its opening to the public aimed at enhancing this industrial and intangible heritage, turning it into the object of its interpretative discourse.

The exhibition calls for a careful visit to a space characterised by the perspective of its architecture, amidst the lines and marks that time has left behind. The new narrative presented to the public is divided into five different sections that use large-format images, maps and video archives which, in turn, interact with vehicles and machines that highlight the history of electric traction and this thermolectric power plant.

Among the sections, objects and spaces are presented chronologically, from the origins of public transport and the emergence of electric traction, to the evolution of the tram and its deployment in the city. Within the history of the tram, emphasis is also given to the work component, and the fifth and last exhibition area is entirely dedicated to the Massarelos Thermolectric Power Plant. Here, the aim is to present its history and the different phases that marked it, both in terms of electricity generation and as a unique example of a significant industrial heritage in the history of the evolution of electricity production.

INFORMATION ABOUT VISITS

Location:
Alameda Basílio Teles, 51
4150-127 PORTO

Booking:
Required, at least 5 days
in advance (subject to availability)

Booking contacts:
Porto Tram Museum/STCP
Tel.: +351 226 158 185
Email: museu@stcp.pt

Visiting days:
Tuesday to Sunday - from 10.00 am to
6.00 pm
Monday - 2.00 pm to 6.00 pm

Number of visitors: Min. 15 - Max. 40
Duration of the visit: 30 to 120 min.
Languages: Portuguese + English + French
Shop: Yes

For more information, please visit:
<https://www.museudocarroelectrico.pt/servicos-educativos/visitas-escolas.aspx>



PORTO

Beer that tastes like beer.

Mini Fábrica de Sabonetes Claus Porto

This workshop starts with a visit to the internally curated exhibition that marks the beginning of a journey through the history and heritage of Claus Porto. Visitors are invited to travel back in time with the help of period documents, photographs and objects relating to some of the most important moments of the last 136 years. Next, participants will be led to a reserved area where they'll discover a fully equipped 'mini soap factory' revealing how Claus Porto soaps are produced. Through a miniature version of our original production line, we invite you to discover why Claus Porto crafts the finest soaps in the world.

This workshop starts with a visit to the internally curated exhibition that marks the beginning of a journey through the history and heritage of Claus Porto. Visitors are invited to travel back in time with the help of period documents, photographs and objects relating to some of the most important moments of the last 136 years. Next, participants will be led to a reserved area where they'll discover a fully equipped 'mini soap factory' revealing how Claus Porto soaps are produced. Through a miniature version of our original production line, we invite you to discover why Claus Porto crafts the finest soaps in the world.

INFORMATION ABOUT VISITS

Location:
Rua das Flores, 22
4050-262 Porto

Booking:
Required, at least 15 days
in advance (subject to availability)

Booking contacts:
Flagship Store Claus Porto
Tel.: +351 225 371 909
Email: marta.marcelo@achbrito.com

Visiting days:
Monday to Friday (except public holidays)

Number of visitors: Min. 10 - Max. 15
Duration of the visit: 120 min.
Languages: Portuguese + English + Spanish
Shop: Yes

For more information, please visit:
www.clausporto.com

PORTO



Creating Art With Fragrance Since 1887.



Peninsular Papellaria & Artes Gráficas

We are a centenary company, founded in 1905, always in the same family and now in its 5th generation. We are located in the centre of Porto, in a 4-storey 19th-century building, divided into the various production sectors.

In this Factory Tour, you'll travel through time, from the days of letterpress printing with individual lead types to the more recent production methods. You'll have the opportunity to see our centuries-old machines in operation and learn a little about the history of one of Porto's most iconic businesses.

INFORMATION ABOUT VISITS

Location:
Rua Mouzinho da Silveira, 67-71
4050-415 Porto

Booking:

Required, at least 1 day
in advance (subject to availability)

Booking contacts:

Peninsular - Papellaria & Artes Gráficas
Tel.: +351 222 005 225
Email: comercial@peninsular.com.pt
Website: www.peninsular.com.pt

Visiting days:
Monday to Friday
(Session at 10.00 am + Session at 4.00 pm)

Number of visitors: Min. 2 - Max. 10
Minimum age: (not applicable)
Languages: Portuguese + Spanish + English
Duration of the visit: 30-45 min.
Shop: Yes

For more information, please visit:
www.peninsular.com.pt

PORTO



118 years and 5 generations dedicated
to Graphic Arts and Stationery



Transport and Communication Museum

Customs Building: (Re)connecting at Port(o)

The history of the New Porto Customs Building, built on Miragaia beach in 1859, is closely associated with the industrial memory of the city of Porto, the northern region, and the country.

On the one hand, it incorporated various materials produced by national and foreign industries in its construction; on the other hand, as a customs service, it served as a space for the entry and exit of raw materials and final products resulting from the global industrialisation process - a true gateway connecting Porto to the world.

A visit to the building reveals the spaces where various tasks of the customs process were carried out, such as stevedoring, opening and checking goods, weighing and counting, treasury operations and the careful safekeeping of money, archiving voluminous customs clearances, storing hazardous products... The cranes on the old river

and railway docks, the 'Giraffe' crane overlooking the river, the rails inside the building, the wagon, the bell signaling the end of the working day for employees, the Port wine ledgers in the Library, the scales, the stamps, the clocks... all bear witness to the old customs bustle.

After a period of near-abandonment, due to the relocation of many services to Leixões and areas near the airport, as well as new road and rail terminals, the building is once again bustling with people who come here to communicate, learn, experience, and feel the emotions associated with its new functions as a Museum and Congress Centre.

And the recent classification as a National Monument has precisely recognised the importance of this project in the national socio-cultural panorama.

Visit the New Customs Building and let yourself be enchanted by the memories of the place...

INFORMATION ABOUT VISITS

Location:
Edifício da Alfândega Nova do Porto
Rua Nova da Alfândega 4050-429
Porto - Portugal
+41° 8' 35.30", -8° 37' 17.69"

Booking:
Required, at least 7 days in advance (subject to availability)

Booking contacts:
Tel.: (+351) 22 340 3000
Email: museu@amtc.pt
Visiting days:
Tuesday to Friday at 3.30 pm
Saturdays, Sundays, and public holidays at 4.00 pm
(on request)

Number of visitors: Min. 10 - Max. 25
Minimum age: not applicable
Languages: Portuguese, English
Duration of the visit: 1h30
Shop: Yes

For more information, please visit:
www.amtc.pt/alfandega-percurso-interpretativo



PORTO

Visit the New Customs Building and let yourself be enchanted by the memories of the place...





Grupo Dinamizador
Rede Portuguesa de

**turismo
industrial**



S.taMARIAdaFEIRA

Santa Maria da Feira is home to Portugal's main cork industrial hub, the world's largest cork processing centre, with companies that not only explore the traditional potential of this sustainable material but also venture into various other areas where cork can surprise, from art to furniture, from fashion to cosmetics.

Here, tourists experience sensory Factory Tours inside active cork factories, uncovering a fascinating world of products where cork can be applied in various ways. To offer these tourism products, the City Council collaborates with APCOR - the Portuguese Cork Association - as a privileged partner. With the association's 'signature', the Cork Experience Tour provides a unique journey through the secrets and memories of the production process tailored to the profile of each group, and the Cork Welcome Centre serves as a knowledge hub and exhibition about the cork industry.

A visit to the Santa Maria de Lamas Museum, also known as 'Cork Museum,' complements this itinerary through the material and immaterial heritage associated with the cork industry, both in the Cork Room and in the permanent exhibition.

At the Terras de Santa Maria Paper Museum, visitors can also enjoy this symbiosis of knowledge, senses and emotions. Set up in two former 19th century paper mills, this unique museum space in the country aims to revive memories and paper making practices through a circuit of unparalleled Factory Tours at Engenho da Lourença (artisanal production) and Casa da Máquina (industrial production). The journey through the territory's history is enriched by a visit to the Convento dos Loios Museum, in the historic centre, and culminates at the iconic Castle of Feira, one of Portugal's most notable military monuments.

<http://visitfeira.travel/>

Santa Maria de Lamas Museum

Also known as 'Cork Museum', the Lamas Museum was founded in the 1950s by local cork industrialist and philanthropist Henrique Amorim (1902-1977).

In addition to its collections, this space is inseparable from cork, both due to the Founder's connection to the manufacturing industry and to the abundance of cork in the area where it is located. That was the reason that led Henrique Amorim, after amassing a vast collection of pieces from so many different areas, to include the raw material to which he dedicated his life in the exhibition on display at 'his Museum'. And he did so not only through industrial archaeology, but also through the association between cork and sculpture.

Renovated since 2004, this museum, a veritable repository of memories, is now seen as a very particular case study in the history of Portuguese collecting and museology during the Estado Novo period. Inside, thousands of objects ranging from sacred art and ethnography to statuary and natural sciences (in addition to its industrial collection) stand out. Its programming is wide-ranging, making it a socially active venue with great cultural and educational value.

Recognising the quality of its space and collection, the Lamas Museum was accredited by the Portuguese Museum Network in 2018. And in the last two editions (2022 and 2023) of the 'APOM Awards', given by the Portuguese Museology Association, it was awarded two prizes and an honourable mention.

INFORMATION ABOUT VISITS

Location:

Largo da Igreja, 90
Parque de Santa Maria de Lamas
4535-412 Santa Maria de Lamas
GPS: N 40°97'72,84" W 8°57'09,77"

Booking:

Required, at least 1 day in advance (subject to availability)

Booking contacts:

Santa Maria de Lamas Museum
Tel.: +351 227 447 468
Email: geral@museudelamas.pt

Visiting days:

Daily
9.30 am > 12.30 pm / 2.00 pm > 5.30 pm
Closed: Easter Sunday,
1 May, 1 November,
24 to 26 December, 31 December,
and 1 January.

Number of visitors: Guided Tour

Minimum of 10 participants
Admission: adult: €4, senior citizens and students: €3, and visit with workshop: €4
Languages: Portuguese + English + Spanish
Duration of the visit: guided tour with or without Educational Service workshop - approximate duration of 60 to 90 min.

Shop: Yes

For more information, please visit:
www.museudelamas.pt



S.taMARIAdaFEIRA



Visit us and feel surprised!
Enjoy a unique museum that combines future, tradition and memory.

Loios Convent Museum

An Adventure in Cork

A space dedicated to History and Heritage, the Loios Convent Museum aims to safeguard, enhance and disseminate the testimonies and memories of the historical and cultural heritage of the municipality and the region. It promotes various activities of clear interest for the understanding of cultural, regional and national diversity. The permanent exhibition features sections on Archaeology, History and Ethnography, explaining the origins of Humanity, evolution and development of a vast administrative territory once known as Terra de Santa Maria.

It was in this territory that, from the 18th century onwards, there was a substantial boost in the cork stoppers industry, thanks to the growth in wine production and exports, coupled with the relative geographical proximity of the municipality of Feira to the Douro wine region. Santa Maria da Feira is currently the largest cork processing centre.

That's why we invite you to participate in an Adventure in Cork, exploring the Cork Stoppers Industry section of the permanent exhibition at the Loios Convent Museum. Come and find out where cork comes from, how it becomes a cork stopper, and what it's used for... After that, we'll reuse cork stoppers, creating useful and personalised objects.

INFORMATION ABOUT VISITS

Location:
Largo da Igreja, 90
Praça Dr. Guilherme Alves Moreira 4520
Santa Maria da Feira

Booking:
Required, at least 2 days
in advance (subject to availability)

Booking contacts:
Loios Convent Museum
Tel.: +351 256 331 070
Email:
museuconventodosloios@cm-feira.pt

Visiting days:
Tuesday to Friday 9.30 am > 5.00 pm
Saturday and Sunday 2.30 pm > 5.30 pm
Closed on Mondays, public holidays,
Easter, Christmas and New Year

Number of visitors: Min. 10 - Max. 25

Languages: Portuguese + English
+ Sign Language
Duration of the visit: 50 minutes
Shop: Yes

For more information, please visit:
<https://musedosloios.cm-feira.pt/>

S.taMARIAdaFEIRA



Terras de Santa Maria Paper Museum

Set up in two former 19th-century paper mills, the Terras de Santa Maria Paper Museum is unique in the country. Its mission is to preserve memories of the history of paper, enhancing the historical, cultural, social and economic values of a paper region with three centuries of activity, maintaining a permanent commitment between the past and the present.

Positioning itself as an active industrial museum, it is dedicated to the history of paper manufacturing, from its handcrafted 'sheet by sheet' production phase to the continuous paper production that marked the industrial environment of the last century. It also explores the recent history of the paper industry in Portugal.

At the Paper Museum, voted Best Portuguese Museum in 2011, doors open to unique sensory Factory Tours in Engenho da Lourença (artisanal production) and Casa

da Máquina (industrial production), engaging visitors in the manufacturing processes, sharing memories, and internalising gestures often repeated by the workers who laboured there, thus reviving memories of paper manufacturing. Inaugurated on 26 October 2001, the Paper Museum is the first museum dedicated to the History of Paper in Portugal, highlighting the importance that the paper industry has had in the municipality of Santa Maria da Feira and in the vast region of Terras de Santa Maria since 1708.

The Paper Museum, in addition to its several buildings, showcases artifacts and machinery from the artisanal and industrial paper manufacturing processes originating from various paper-making centres in the country. Those artifacts date back to the 18th, 19th and 20th centuries. The museum also keeps a collection of watermarked papers.

INFORMATION ABOUT VISITS

Location:
Rua de Rio Maior, 338
4535-301 Paços de Brandão.
GPS: N 40°58'52,08" W -8°35'8,74"

Booking:
Required, at least 2 days
in advance (subject to availability)

Booking contacts:
Terras de Santa Maria Paper Museum
Tel.: +351 256 370 850
Email: museudopapel@cm-feira.pt

Visiting days:
Tuesday to Friday 9.30 am > 5.00 pm
Saturday and Sunday 2.30 pm > 5.30 pm
Closed on Mondays, public holidays,
Easter, Christmas and New Year
Number of visitors: Min. 10 - Max. 25
Languages: Portuguese + English + Sign
Language
Duration of the visit: 50 minutes
Shop: Yes

For more information, please visit:
<https://museudopapel.cm-feira.pt>



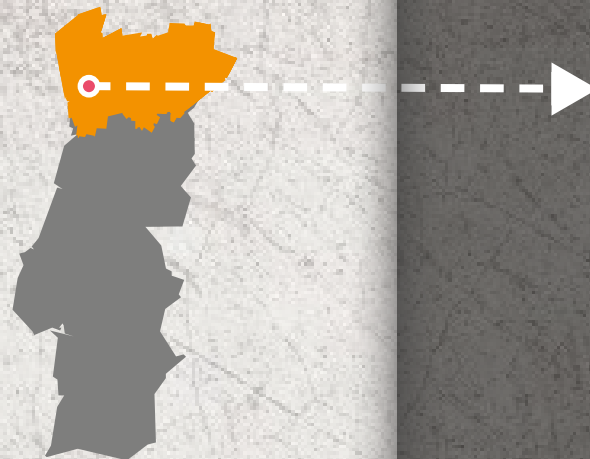
S.taMARIAdaFEIRA

Visit the Paper Museum and participate in its various workshops!



Grupo Dinamizador
Rede Portuguesa de

**turismo
industrial**



santoTIRSO

The municipality of Santo Tirso has an extremely interesting past from various perspectives.

Let's go back to the 19th century. Santo Tirso is nestled in the Ave Valley. This territory was a remarkable case in the context of the textile industry, with factories manufacturing and exporting globally. The wealth generated led to the development of working-class neighbourhoods and a unique socio-economic momentum. Entire families worked in the 'factory'. Social life was heavily conditioned by the factory whistle. This architectural element dominated the landscape and the hearts of the workers.

Women and men learned the art of weaving well on looms; the more creative ones provided suggestions for patterns/prints; apprentices picked up bobbins; orders were prepared in large warehouses; measurements and pieces were the responsibility of trusted men (calculations were done on paper without

calculators); the Employers were the Lords of the Land...!

This universe, filled with stories and knowledge, has been preserved in some places. Santo Tirso has the privilege of being part of the group of territories whose heritage has generated motivation for its preservation and enhancement. The Interpretive Centre of the Santo Thyrso Factory is a case in point. Today, industrial heritage coexists with living industry.

You can visit a monastery and learn about the production process of a monastic liqueur unique in Portugal. Antiquity added wisdom and ingenuity. The art of doing things well thrives on exotic ingredients and the talent to combine them, giving time the gift it deserves. Industrial Heritage facilitates this knowledge and makes it possible to create unique Factory Tours. Visit Santo Tirso..., come and discover our Industrial Heritage.

www.cm-stirso.pt/conhecer/visitar/turismo-industrial

Interpretive Centre of the Santo Thyrso Factory

Located on the left bank of the Ave River, and close to the city centre, the Santo Thyrso Spinning and Textile Factory was one of the most iconic companies in the Ave Valley, the heart of the Portuguese textile and clothing industry, since the construction of the Vizela River Factory in 1845. Founded in 1896, the Santo Thyrso Factory is an unavoidable reference in the collective memory of Santo Tirso and a fundamental space for understanding the development of the region and the textile industry.

The permanent exhibition reveals the history of this company and its connection to the textile industrialisation of the Ave Valley. The Interpretive Centre addresses also the new directions of the Textile and Clothing Industry, the challenges of the present, and the various aspects of the fashion industry. The Machine Room, a space for temporary exhibitions, recalls the great adventure of energy and marks the beginning of a journey through the most representative spaces of this industrial unit. Visit this important space and you'll have the opportunity to learn about how the memory of this company and its workers is valued.

INFORMATION ABOUT VISITS

Location:
Avenida da Fábrica de Santo Tirso, 88
4780-257 Santo Tirso

Booking:
Visits to the Interpretive Centre are free of charge. Booking required at least 2 days in advance.

Booking contacts:
Interpretive Centre
of the Santo Thyrso Factory
Tel.: +351 252 809 120
Email: museus@cm-stirso.pt

Visiting days:
Monday to Friday: 09.00 am to 5.30 pm
Saturday, Sunday and Public Holidays:
Closed

Number of visitors: Min. 5 - Max. 25
Duration of the visit: 30 to 60 min.
Languages: Portuguese + English +
Spanish + French
Shop: No

For more information, please visit:
www.cm-stirso.pt/viver/cultura/fabrica-santo-thyrso



santoTIRSO



polopiqué
CULTURA

Discover the textile heritage of the Ave Valley, its people, and their stories.

Singeverga Liqueur Production Unit

The Monastery of São Bento de Singeverga was founded in 1892 and elevated to the status of Abbey in 1938 - the only one still active in Portugal.

The Liqueur of the Singeverga Monastery is the only Portuguese monastic liqueur, produced using entirely artisanal methods by the monks of this Benedictine monastery, located in Roriz, municipality of Santo Tirso.

Following the Benedictine motto - Ora et labora - the monks of Singeverga engage in various agricultural activities that provide them with food and sustenance, but they also occupy their time with various arts, such as leather bookbinding, sculpture, and the manufacturing of liturgical wooden furniture both for their own use and for sale.

In 1935, after various experiments and fine-tuning, they also discovered a formula for a liqueur, which they named after the monastery and the

place where it stands - Singeverga. Since then, the secret formula has been passed down from monk to monk.

Requiring time, perseverance and meticulous work in its preparation, the liqueur undergoes two macerations with 12 spices and aromatic plants over about two weeks until it reaches a liqueur with body and volume, where the characteristic topaz colour stands out, mainly due to the saffron. The liqueur also includes cinnamon, sweet flag, angelica root, cloves, nutmeg, aromatic myrrh and vanilla, among others. The liqueur then rests in oak barrels that have been used for several years, giving it density and texture, but also elegance and smoothness.

A liqueur with a very fine aroma and delicate flavour, it is the only genuinely monastic liqueur in Portugal, crafted by monks through the direct distillation of spices and aromatic plants.

INFORMATION ABOUT VISITS

Location:

Provincia Portuguesa da Ordem Beneditina
Rua do Mosteiro de Singeverga, 200
4795-309 Roriz, Santo Tirso
GPS: 41.34475, -8.36819

Booking:

Required, at least 3 days
in advance (subject to availability)

Booking contacts:

Interactive Tourist Shop
of the Santo Tirso City Council
Tel.: +351 252 830 411
Email: turismo@cm-stirso.pt
Singeverga Monastery
Tel.: +351 252 941 176
Email:
abadia@mosteirodesingeverga.com //
licor@mosteirodesingeverga.com

Visiting days:

Monday to Friday 10.00 am » 12.00 pm
3.00 pm » 5.30 pm
Saturday, Public Holidays and Vacations:
on request // Sunday: closed

Number of visitors: Min. 5 - Max. 15

Minimum age: 18+

Duration of the visit: 60 min.

Languages: Portuguese + English
+ Spanish + French

Shop: Yes

For more information, please visit:

www.mosteirodesingeverga.com



santoTIRSO

A drink that lifts the spirit... and soothes the soul!



Grupo Dinamizador
Rede Portuguesa de

**turismo
industrial**



S. JOÃO da MADEIRA

Take a journey back in time to the century-old Viarco pencil factory, explore the history of hat-making workers whose creations adorn so many heads around the world, or discover the process of crafting the textile interiors of our automobiles - these are just a few of the Factory Tours offered by Industrial Heritage in S. João da Madeira. Industry and labour are hallmarks of S. João da Madeira, contributing to the enhancement of the territory. The Municipality has capitalised on these factors through an innovative and distinctive tourism programme. Since 2012, when the City Council of S. João da Madeira launched the Industrial Heritage programme, thousands of people have had the opportunity to visit factories in full swing and learn about their production processes first-hand.

These tourist circuits through the industrial heritage of the municipality, which also include museums and institutions related to business development, combine the preservation of industrial archaeology legacy with the promotion of traditional industries and new technological and creative industries. They serve as a showcase for both the place's historical memory and its future in the industry of S. João da Madeira. The starting point for this journey into the industrial world is the Welcome Centre, located in the iconic Oliva Tower which, in addition to serving as a booking centre, also serves as a welcoming space for all visitors.

<https://turismoindustrial.cm-sjm.pt>

Design and Footwear Academy

Established in 1965, the Vocational Training Centre for the Footwear Industry, as its name suggests, had as its main mission to provide workers with the skills they needed for industrial activities. Initially, it offered short-term courses related to footwear stitching, modelling and cutting. The current facilities were inaugurated in 1974, enabling it to meet the growth experienced by the Portuguese footwear industry during that decade. At the time, several training centres opened their doors across the country.

Later, especially from the 1980s onwards, it successfully addressed the challenges posed by new technologies and their growing importance in the business world. It currently pursues an educational policy where technical excellence blends with brand design and concept. Adapting the curricula to an increasingly demanding global market is a constant concern, resulting in high-quality education. Graduates stand out in international design and innovation competitions, benefiting from a facility equipped with state-of-the-art training resources at the forefront of the industry.

INFORMATION ABOUT VISITS

Location:
(Meeting Point)
Rua Oliveira Júnior, 591
3700-204 - S. João da Madeira

Booking:
Required, at least 5 days
in advance (subject to availability)

Booking contacts:
Welcome Centre of Industrial Heritage
of S. João da Madeira
Tel.: +351 256 200 204
Email: turismoindustrial@cm-sjm.pt

Visiting days:
Monday afternoon, Tuesday, Wednesday,
Thursday, and Friday morning.
August, Public Holidays and Vacations
(on request)

Number of visitors: Min. 5 - Max. 20
Minimum age: 6+
Duration of the visit: 60 min.
Languages: Portuguese + English
Shop: No

For more information, please visit:
<https://turismoindustrial.cm-sjm.pt/academia>

S. JOÃO da MADEIRA



We develop skills ranging from creative expression and technical knowledge to hands-on know-how.



Belcinto

Based in S. João da Madeira, Belcinto is a company dedicated to the design, production and sale of high-quality leather fashion accessories. It caters to customers seeking both sophistication and quality. Founded in 1961, Belcinto initially started manufacturing handcrafted leather belts using cowhide and calf leather. Earning prominence in the production of handmade leather belts, they expanded their product line to include school backpacks for children, men's travel bags, wallets, hats, and even women's purses and accessories, always specialised in leather. With a predominantly export-oriented focus, the company regularly participates in significant fashion industry events and collaborates with some of the world's top designers. Those designers recognise the assurance of quality raw materials coupled with the established craftsmanship cultiva-

ted over the years. Sustainability and environmental care are fundamental values for Belcinto, committed to using vegetable-tanned leather, aiming to offer products that can be passed down through generations. In addition to concerns with the environmental impact of raw materials, processes and facilities, in 2022 Belcinto launched the LeatherGoods project, which aims to produce exclusively from leftover raw materials from Belcinto's collections and productions, repurposing them entirely without generating new waste in the process. This project won the 1st edition of the SME EnterPRIZE | European Sustainability Award for SMEs.

INFORMATION ABOUT VISITS

Location:
(Meeting Point)
Rua Oliveira Júnior, 591
3700-204 - S. João da Madeira

Booking:
Required, at least 5 days
in advance (subject to availability)

Booking contacts:
Welcome Centre of Industrial Heritage
of S. João da Madeira
Tel.: +351 256 200 204
Email: turismoindustrial@cm-sjm.pt

Visiting days:
Monday afternoon, Tuesday, Wednesday,
Thursday, and Friday morning.
August, Public Holidays and Vacations
(on request)

Number of visitors: Min. 5 - Max. 20
Minimum age: 10+
Duration of the visit: 45 min.
Languages: Portuguese + English + French
Shop: No

For more information, please visit:
<https://turismoindustrial.cm-sjm.pt/belcinto>



S. JOÃO da MADEIRA

Leather Goods with Soul

Bulhosas [Irmãos], SA

Bulhosas, a company founded in São João da Madeira in 1935 by Alberto Rodrigues Bulhosa, is an exemplary case of adapting to the changing times in the city of São João da Madeira. Currently managed by the third generation of the family, this is a graphic arts company primarily focused on producing self-adhesive labels in sheet and roll format. They work with materials such as paper, cardboard, and adhesive paper and film. In addition to labels, they also produce injected plastic items like hangers, clips, coasters, and more, diversifying their product range to cater to various audiences.

Where the past blends with the most advanced technology in the graphic industry, visitors to Bulhosas learn about the company's history in its museum room, showcasing label machines and catalogues that have spanned generations. This is followed by a tour of the current facilities, where you can see the machines working and the production of labels and tags. Bulhosas is an example of great adaptability to its market, a benchmark both nationally and internationally, manufacturing products for renowned brands. The contrast between the past and present of the graphic industry in Portugal is just one of the significant features of a visit to Bulhosas.

INFORMATION ABOUT VISITS

Location:
(Meeting Point)
Rua Oliveira Júnior, 591
3700-204 - S. João da Madeira

Booking:
Required, at least 5 days
in advance (subject to availability)

Booking contacts:
Welcome Centre of Industrial Heritage
of S. João da Madeira
Tel.: +351 256 200 204
Email: turismoindustrial@cm-sjm.pt

Visiting days:
Monday afternoon, Tuesday, Wednesday,
Thursday and Friday morning.
August, Public Holidays and Vacations
(on request)

Number of visitors: Min. 5 - Max. 10
Minimum age: 10+
Duration of the visit: 60 min.
Languages: Portuguese + English + French
Shop: No

For more information, please visit:
<https://turismoindustrial.cm-sjm.pt/bulhosas>



S. JOÃO da MADEIRA

The secret is to mix the ink and infuse it with soul.

CEI

Companhia de Equipamentos Industriais

Established in 1995, CEI - Companhia de Equipamentos Industriais aims to develop and produce technologically advanced and innovative equipment for cutting materials and other industrial processes applied to ornamental stone (e.g. kitchen worktops), footwear and leather goods, automotive, aeronautical and metalworking industries, among others. The company's strategy revolves around a continuous commitment to specialising in technologies with potential horizontal applications across various industrial sectors, thus enabling it to diversify its activity.

CEI has therefore been developing a comprehensive range of products stemming from solutions such as: waterjet cutting technology, milling, laser technology and robotic technology. Having invested in developing its own know-how from the outset, CEI is now an internationally acknowledged brand of excellence, creating and manufacturing high-tech equipment in Portugal. Innovation has been a core focus for CEI, evident in its research protocols with various R&D entities and active participation in national and European development projects. CEI has developed hundreds of different technology-based pieces of equipment, and as a result of this activity, holds several industrial patents.

INFORMATION ABOUT VISITS

Location:
(Meeting Point)
Rua Oliveira Júnior, 591
3700-204 - S. João da Madeira

Booking:
Required, at least 5 days
in advance (subject to availability)

Booking contacts:
Welcome Centre of Industrial Heritage
of S. João da Madeira
Tel.: +351 256 200 204
Email: turismoindustrial@cm-sjm.pt

Visiting days:
Monday afternoon, Tuesday, Wednesday,
Thursday, and Friday morning.
August, Public Holidays and Vacations
(on request)

Number of visitors: Min. 5 - Max. 20
Minimum age: 15+

Duration of the visit: 45 min.
Languages: Portuguese + English + French
Shop: No

For more information, please visit:
<https://turismoindustrial.cm-sjm.pt/cei>

S. JOÃO da MADEIRA



Building trust.



Portuguese Footwear Technological Centre

The CTCP - Portuguese Footwear Technological Centre is a non-profit organisation founded in 1986 by the sector's industrial association (APICCAPS) and two institutes from the Ministry of Economy dedicated to supporting innovation - IAPMEI and INETI. Its main objectives include providing technical and technological support to companies in the footwear sector, assisting them in various activities related to their business strategies. Born from a small technical laboratory dedicated to conducting quality control tests and trials, it was mainly from 1990 onwards that the CTCP took on a more active role in approaching and collaborating with companies, and began to intervene in other areas as well, namely by providing the following services:

Industrial organisation and management; Quality control (chemical and physical tests); IT and Management Systems; Certification of companies and products; Preparation and monitoring of industrial projects; Vocational training and qualification; Production of Technical Documentation (Audiovisuals, Brochures, Manuals, Newsletter); Environment; Occupational health and safety; Design and multimedia; Industrial property.

INFORMATION ABOUT VISITS

Location:
(Meeting Point)
Rua Oliveira Júnior, 591
3700-204 - S. João da Madeira

Booking:
Required, at least 5 days
in advance (subject to availability)

Booking contacts:
Welcome Centre of Industrial Heritage
of S. João da Madeira
Tel.: +351 256 200 204
Email: turismoindustrial@cm-sjm.pt

Visiting days:
Monday afternoon, Tuesday, Wednesday,
Thursday, and Friday morning.
August, Public Holidays and Vacations
(on request)

Number of visitors: Min. 5 - Max. 20
Minimum age: 6+
Duration of the visit: 60 min.
Languages: Portuguese + English + French
Shop: No

For more information, please visit:
<https://turismoindustrial.cm-sjm.pt/ctcp>



Serving the industry since 1986.



Cortadoria Nacional do Pêlo

Cortadoria Nacional de Pêlo is a highly qualified company in the preparation of textile fibres, primarily rabbit, hare and beaver fur, for the hat-making, industrial felt and wool industries. Founded in 1943, the company originated with the Industrial Conditioning Law (1931) and the subsequent plan to reorganise the hat-making industry, leading to the concentration of the fur preparation sector in a single company, based in S. João da Madeira, with the participation of all the existing manufacturers at the time. In 1960, under the leadership of António Oliveira Figueiredo, the company's manager, the factory building was inaugurated, and it continues to operate there to this day.

It is currently one of the largest companies in the sector worldwide, marketing a wide range of products in various parts of the world. With a growing concern for environmental and economic sustainability issues, since 2011, the company has been reinventing the traditional industrial process. It seeks partnerships and explores different approaches that have allowed for the upcycling of a by-product of human food consumption - rabbit fur - not just for the fur for hats, but also taking advantage of the skin and turning it into a distinctive, high-quality and highly resistant material, ready to be used in the fashion industry. The result of this revolution culminated in the emergence of Cortadoria Leather, a biodegradable leather brand free from harmful substances to the environment and the user.

INFORMATION ABOUT VISITS

Location:
(Meeting Point)
Rua Oliveira Júnior, 591
3700-204 - S. João da Madeira

Booking:
Required, at least 5 days
in advance (subject to availability)

Booking contacts:
Welcome Centre of Industrial Heritage
of S. João da Madeira
Tel.: +351 256 200 204
Email: turismoindustrial@cm-sjm.pt

Visiting days:
Monday afternoon, Tuesday, Wednesday,
Thursday, and Friday morning.
August, Public Holidays and Vacations
(on request)

Number of visitors: Min. 5 - Max. 20
Minimum age: 12+
Duration of the visit: 30 min.
Languages: Portuguese + English
+ French + Spanish
Shop: No

For more information, please visit:
<https://turismoindustrial.cm-sjm.pt/cortadoria>



Cradle to Cradle



ERT Textil Portugal

ERT is a Portuguese multinational company present in 8 countries, specialised in the manufacturing of textile components for automotive interiors. Its headquarters are located in São João da Madeira, at the heart of an automotive industry cluster. Mobility is also a strategic market, but the automotive sector remains its primary business area. Established in 1992, ERT initially started as a small company providing textile lamination services for shoe linings, but the expertise it gained in this technological field was the key to enter the automotive sector in 2000.

While the majority of its turnover comes from the automotive sector, largely for exports, ERT also caters to other industries outside this realm, supplying thermoformed and laminated products for applications in sports, leisure, fashion, footwear, home textiles and construction. During your visit to ERT, you can explore the unit dedicated to cutting, sewing and coating components with textiles for automobiles.

INFORMATION ABOUT VISITS

Location:
(Meeting Point)
Rua Oliveira Júnior, 591
3700-204 - S. João da Madeira

Booking:
Required, at least 5 days
in advance (subject to availability)

Booking contacts:
Welcome Centre of Industrial Heritage
of S. João da Madeira
Tel.: +351 256 200 204
Email: turismoindustrial@cm-sjm.pt

Visiting days:
Monday afternoon, Tuesday, Wednesday,
Thursday, and Friday morning.
August, Public Holidays and Vacations
(on request)

Number of visitors: Min. 5 - Max. 20
Minimum age: 10+
Duration of the visit: 45 min.
Languages: Portuguese + English + French
Shop: No

For more information, please visit:
<https://turismoindustrial.cm-sjm.pt/ert>



S. JOÃO da MADEIRA



FORVIA Faurecia Moulded

With the merger of the Faurecia and Hella groups, the French business group Forvia became one of the key players in the global automotive industry. With over a century of history, they rank as the seventh-largest supplier in the sector globally, employing more than 150,000 people in over 40 countries. One in every two vehicles is equipped with Forvia solutions and its most advanced technologies. The Forvia Group offers customised mobility solutions with a focus on safety, sustainability and technological innovation. It combines expertise in electronics, clean mobility, lighting, interiors and seating, to drive change in the automotive industry.

The history of Forvia Faurecia in Portugal began in S. João da Madeira with the acquisition of the majority of Molaflex's capital by the French group Bertrand Faure Automobili - which later evolved into the Faurecia group, engaged in automotive activities at that time. Currently, Forvia Faurecia has six industrial units and a Research & Development Competence Centre in Portugal. In S. João da Madeira, you can visit Forvia Faurecia Moldados and get a closer look at the manufacturing process of headrests, armrests and foam seats for our automobiles, touring the production corridors of its multiple injection and cutting and sewing lines.

INFORMATION ABOUT VISITS

Location:
(Meeting Point)
Rua Oliveira Júnior, 591
3700-204 - S. João da Madeira

Booking:
Required, at least 5 days
in advance (subject to availability)

Booking contacts:
Welcome Centre of Industrial Heritage
of S. João da Madeira
Tel.: +351 256 200 204
Email: turismoindustrial@cm-sjm.pt

Visiting days:
Monday afternoon, Tuesday, Wednesday,
Thursday, and Friday morning.
August, Public Holidays and Vacations
(on request)

Number of visitors: Min. 5 - Max. 20
Minimum age: 10+
Duration of the visit: 45 min.
Languages: Portuguese + English + French
Shop: No

For more information, please visit:
<https://turismoindustrial.cm-sjm.pt/faurecia>

S. JOÃO da MADEIRA



Inspiring Mobility.



Fepsa Feltros Portugueses, SA

Founded in 1969, FEPSA - Feltros Portugueses, SA is the only hat felt factory in Portugal and is the result of the strategic vision of six entrepreneurs in the hat industry who decided to join forces and consolidate their production into a single company. Internationally recognised as a leader in the production of high-end felts, over the years FEPSA has innovated, in terms of technologies, processes and products, as well as in terms of management systems. This has provided the company with a significant competitive advantage, and the sustained capture of one-third of the global market.

The company specialises in manufacturing hat felts from animal fibres, such as rabbit, hare and beaver fur, or wool. Felts for hats are shipped worldwide from here, catering to the fashion and haute couture markets, as well as traditional models significant for ethnic, religious and professional markers.

INFORMATION ABOUT VISITS

Location:
(Meeting Point)
Rua Oliveira Júnior, 591
3700-204 - S. João da Madeira

Booking:
Required, at least 5 days
in advance (subject to availability)

Booking contacts:
Welcome Centre of Industrial Heritage
of S. João da Madeira
Tel.: +351 256 200 204
Email: turismoindustrial@cm-sjm.pt

Visiting days:
Monday afternoon, Tuesday, Wednesday,
Thursday, and Friday morning.
August, Public Holidays and Vacations
(on request)

Number of visitors: Min. 5 - Max. 20
Minimum age: 12+
Duration of the visit: 40 min.
Languages: Portuguese + English + French
+ Spanish + Italian + German
Shop: No

For more information, please visit:
<https://turismoindustrial.cm-sjm.pt/fepsa>

S. JOÃO da MADEIRA

The art of working with felt.



Flexitex

In 1964, António Leite de Castro founded Flexitex, a company that lasts to this day. Dedicated since then to the production of knit and jacquard fabric covers designed for the bedding industry, Flexitex stands out for the quality of its products. The company complies with various quality standards and places a constant emphasis on the training of its employees.

At Flexitex's facilities you can see the production process of one of the essential components in mattress construction, from yarn preparation to the final product. Its ex-libris are the giant jacquard looms in operation, which produce the fabrics, and the round looms that produce the knitwear.

INFORMATION ABOUT VISITS

Location:
(Meeting Point)
Rua Oliveira Júnior, 591
3700-204 - S. João da Madeira

Booking:
Required, at least 5 days
in advance (subject to availability)

Booking contacts:
Welcome Centre of Industrial Heritage
of S. João da Madeira
Tel.: +351 256 200 204
Email: turismoindustrial@cm-sjm.pt

Visiting days:
Monday afternoon, Tuesday, Wednesday,
Thursday, and Friday morning.
August, Public Holidays and Vacations
(on request)

Number of visitors: Min. 5 - Max. 20
Minimum age: 10+
Duration of the visit: 45 min.
Languages: Portuguese + English + French
Shop: No

For more information, please visit:
<https://turismoindustrial.cm-sjm.pt/flexitex>

S. JOÃO da MADEIRA



The fabric that makes you sleep on clouds.



Heliotextil Etiquetas e Passamanarias, SA

Heliotextil was established in 1964 under the name Bulhosas e Aguiar, Lda., and it was only in 1972 that it took on its current name. Over the years, it has experienced significant development, enhancing both its productivity and the quality of its products and services. The company designs, develops, produces and sells labels, transfers, rigid and elastic tapes, among other textile accessories.

Its clients span across various sectors, including the textile, automotive, footwear, commerce, services and advertising industries. Investment in infrastructure and equipment, certification, asset enhancement and continuous training are key aspects of the company's strategy for achieving success. It employs around a hundred workers and is characterised as being a modern and comprehensive industrial unit for the production of textile accessories.

INFORMATION ABOUT VISITS

Location:
(Meeting Point)
Rua Oliveira Júnior, 591
3700-204 - S. João da Madeira

Booking:
Required, at least 5 days
in advance (subject to availability)

Booking contacts:
Welcome Centre of Industrial Heritage
of S. João da Madeira
Tel.: +351 256 200 204
Email: turismoindustrial@cm-sjm.pt

Visiting days:
Monday afternoon, Tuesday, Wednesday,
Thursday, and Friday morning.
August, Public Holidays and Vacations
(on request)

Number of visitors: Min. 5 - Max. 20
Minimum age: 6+
Duration of the visit: 45 min.
Languages: Portuguese + English
+ French + Spanish
Shop: Yes

For more information, please visit:
<https://turismoindustrial.cm-sjm.pt/heliotextil>

S. JOÃO da MADEIRA

Inspiring details since 1964.



Mariano Shoes

The history of Mariano Shoes dates back to 1945, when Manuel de Almeida Jorge, a master shoemaker, started producing high-quality men's shoes in S. João da Madeira. His creations quickly gained recognition throughout the country, not only for the quality of the craftsmanship but also for their contemporary design. Still operating from the same location, with a path of growth, Mariano Shoes now produces footwear that reaches demanding customers all over the world. Currently owned by the company All Around Shoes Calçado, Lda., Mariano Shoes continues to uphold its commitment to producing high-quality handmade footwear.

Comfort, elegance and individuality are the cornerstones of Mariano Shoes, where from cutting to shining, the use of machines is minimal, favouring manual processes, one pair at a time. This is complemented by a highly personalised and customised service, involving direct contact with the end customer. This approach caters to individual preferences and specific needs, fostering brand loyalty that transcends generations. This proximity service turns the factory into a large atelier, where visitors and end customers can come and be welcomed just like in a bespoke shop.

INFORMATION ABOUT VISITS

Location:
(Meeting point)
Rua Oliveira Júnior, 591
3700-204 - S. João da Madeira

Booking:
Required, at least 5 days
in advance (subject to availability)

Booking contacts:
Welcome Centre of Industrial Heritage
of S. João da Madeira
Tel.: +351 256 200 204
Email: turismoindustrial@cm-sjm.pt

Visiting days:
Monday afternoon, Tuesday, Wednesday,
Thursday, and Friday morning.
August, Public Holidays and Vacations
(on request)

Number of visitors: Min. 5 - Max. 20
Minimum age: 10+
Duration of the visit: 45 min.
Languages: Portuguese + English + French
Shop: No

For more information, please visit:
<https://turismoindustrial.cm-sjm.pt/mariano>

S. JOÃO da MADEIRA



We combine the tradition of Portuguese footwear with innovation, one pair at a time.



Hat Museum

In 2005, the Hat Museum was set up in the building of the most important industrial unit in this field - Empresa Industrial de Chapelaria (EICHAP/SANJO), which shows the production process of felt hats showcasing machines, tools and documents. Unique in the Iberian Peninsula, it also evokes multiple stories and memories of the men and women who made this industry one of the most important activities in the region's history.

The museum also has two temporary exhibition rooms where hats from its vast collection are displayed, along with creations by national and international designers, further establishing the role of S. João da Madeira in the global panorama of hat fashion and design.

INFORMATION ABOUT VISITS

Location:
(Meeting Point)
Rua Oliveira Júnior, 591
3700-204 - S. João da Madeira

Booking:
Required, at least 5 days
in advance (subject to availability)

Booking contacts:
Welcome Centre of Industrial Heritage
of S. João da Madeira
Tel.: +351 256 200 204
Email: turismoindustrial@cm-sjm.pt

Visiting days:
Tuesday to Sunday
Closed: 1 January, Easter Sunday
and 25 December

Number of visitors: Min. 5 - Max. 20
Duration of the visit: 60 min.
Languages: Portuguese + English + French
Shop: Yes

For more information, please visit:
<https://turismoindustrial.cm-sjm.pt/museu-chapelaria>

S. JOÃO da MADEIRA



A museum worth tipping your hat to.



Footwear Museum

From the workshop to the large factories, here you can discover, in an innovative way within the national museum panorama, the evolution of footwear over time and the reality of contemporary footwear design, while also looking at the cutting edge of technology and creativity. More than a mere exhibition of artefacts, this is a space for learning, creativity and experimentation, a must-visit in São João da Madeira.

Located in the Oliva Tower building, this museum features areas dedicated to traditional craftsmanship and industrial production, spanning the evolution of shoes from prehistoric times to the end of the 20th century (time tunnel). You can also see creations by designers from all over the world and shoes worn by public figures, as well as contemporary artistic productions inspired by shoes.

INFORMATION ABOUT VISITS

Location:
(Meeting Point)
Rua Oliveira Júnior, 591
3700-204 - S. João da Madeira

Booking:
Required, at least 5 days
in advance (subject to availability)

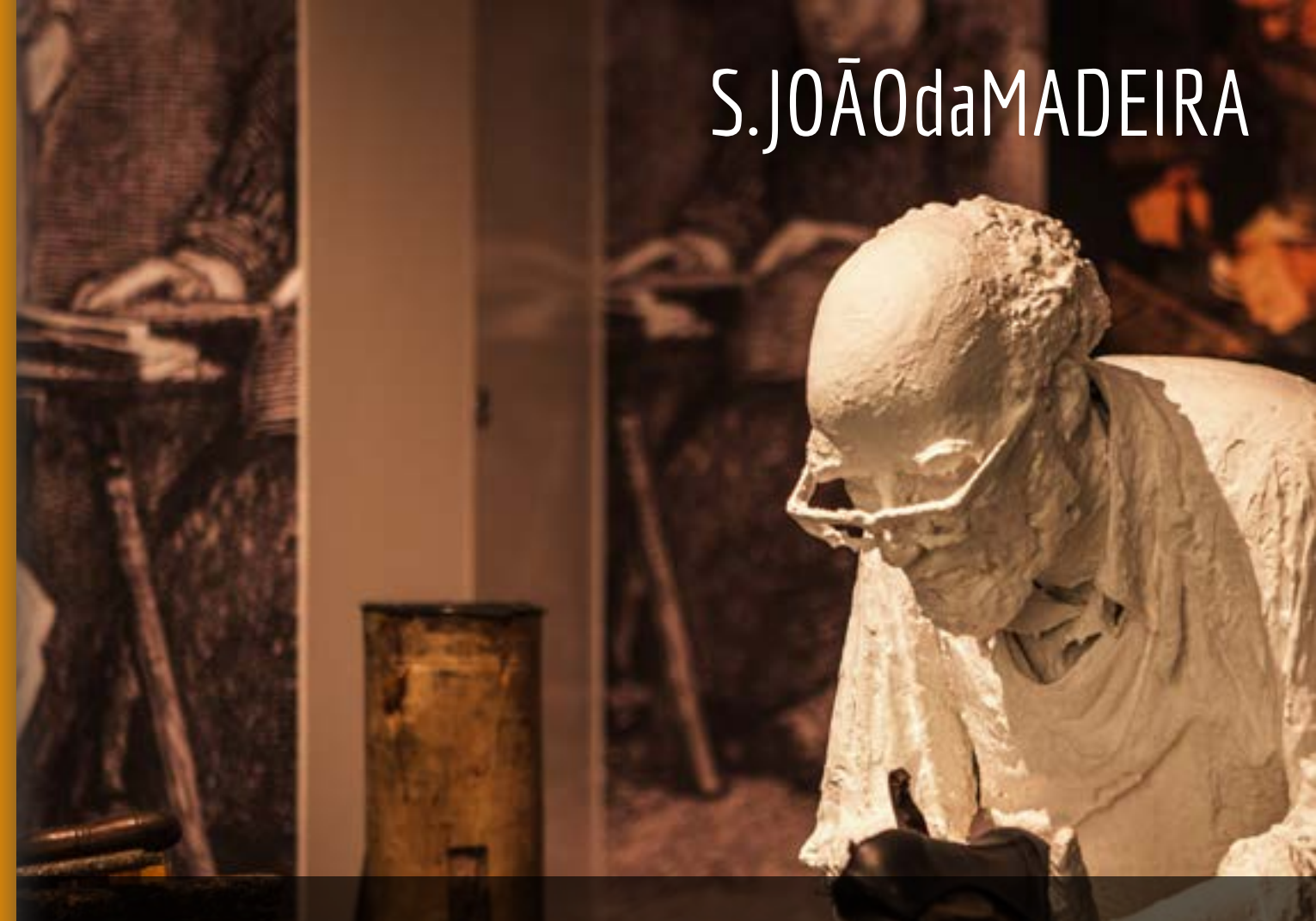
Booking contacts:
Welcome Centre of Industrial Heritage
of S. João da Madeira
Tel.: +351 256 200 204
Email: turismoindustrial@cm-sjm.pt

Visiting days:
Tuesday to Sunday
Closed: 1 January, Easter Sunday,
and 25 December

Number of visitors: Min. 5 - Max. 20
Duration of the visit: 60 min.
Languages: Portuguese + English + French
Shop: Yes

For more information, please visit:
<https://turismoindustrial.cm-sjm.pt/museucalcado>

S. JOÃO da MADEIRA



Oliva Creative Factory

The Oliva Factory is an unavoidable icon in Portuguese industrial history, and for a long time it played a key role in the assertion and socio-economic development of S. João da Madeira.

The Oliva Creative Factory is currently a cultural and artistic space in S. João da Madeira whose mission is to inspire talent and creativity.

Located within the Oliva industrial complex, one of the most important factories in Portugal's industrial history, the Oliva Creative Factory offers a commercial gallery, a contemporary art museum, artist residencies, a dance conservatory, and various spaces for artistic and creative training and development, as well as for cultural production, enjoyment and consumption, all in perfect harmony with the preservation of the industrial architectural heritage.

INFORMATION ABOUT VISITS

Location:
(Meeting Point)
Rua Oliveira Júnior, 591
3700-204 - S. João da Madeira

Booking:
Required, at least 5 days
in advance (subject to availability)

Booking contacts:
Welcome Centre of Industrial Heritage
of S. João da Madeira
Tel.: +351 256 200 204
Email: turismoindustrial@cm-sjm.pt

Visiting days:
Monday afternoon, Tuesday, Wednesday,
Thursday and Friday morning
Closed: August,
Public Holidays and Vacations
(on request)

Number of visitors: Min. 5 - Max. 20
Minimum age: 15+
Duration of the visit: 30 min.
Languages: Portuguese + English + French
Shop: Yes

For more information, please visit:
<https://turismoindustrial.cm-sjm.pt/ocf>

S. JOÃO da MADEIRA



From the 'Empire of Iron' to the empire of ideas.



Oliva Tower

As the Oliva Factory is an unavoidable icon in Portuguese industrial history, its Oliva Tower is now part of the itinerary of the Industrial Heritage Circuits of S. João da Madeira, further enhancing its diversity and attractiveness.

The Iron Circuit, starting at the Oliva Tower, includes a presentation of the history of the iconic factory and a climb up the characteristic Tower, ending with a visit to the new facilities of the so-called Zone 2 of this former metallurgical company. It is now rehabilitated as the Oliva Creative Factory, an immense space dedicated to the creative and cultural industries and to art. This latter area is represented at the Oliva Art Centre with two private collections of contemporary art and art brut.

INFORMATION ABOUT VISITS

Location:
(Meeting Point)
Rua Oliveira Júnior, 591
3700-204 - S. João da Madeira

Booking:
Required, at least 5 days
in advance (subject to availability)

Booking contacts:
Welcome Centre of Industrial Heritage
of S. João da Madeira
Tel.: +351 256 200 204
Email: turismoindustrial@cm-sjm.pt

Visiting days:
Monday to Friday

Number of visitors: Min. 5 - Max. 20
Duration of the visit: 30 min.
Languages: Portuguese + English
Shop: Yes

For more information, please visit:
<https://turismoindustrial.cm-sjm.pt/torre-oliva>

S. JOÃO da MADEIRA



The Empire of Iron.



Viarco

Viarco - Fábrica Portuguesa de Lápis is the only pencil factory in Portugal and probably one of the most versatile in the world. Originating in 1907, its history begins in Vila do Conde when Councillor Figueiredo Faria, along with his partner, French Engineer Jules Cacheux, decided to build a pencil manufacturing plant called Faria, Cacheux & C^ª, also known as Portugália - Fábrica Portuguesa de Lápis. It took a turning point in 1931, when Manoel Vieira Araújo, an experienced industrialist in the hat industry of S. João da Madeira, decided to diversify the business of Vieira Araújo & C^ª, Lda. and acquired the pencil factory.

It was in 1936 that the trademark that would become iconic for the country and accompany generations of Portuguese people to the present day was registered - Viarco. Five years later, in 1941, the company moved to S. João da Madeira, where it still operates today. Always attentive to developments in the sector, Viarco produces a wide range of technical, drawing and everyday-use pencils, designing specific products on demand. Without neglecting the social aspect, the company frequently engages in partnerships with institutions related to education, culture and solidarity.

INFORMATION ABOUT VISITS

Location:
(Meeting Point)
Rua Oliveira Júnior, 591
3700-204 - S. João da Madeira

Booking:
Required, at least 5 days
in advance (subject to availability)

Booking contacts:
Welcome Centre of Industrial Heritage
of S. João da Madeira
Tel.: +351 256 200 204
Email: turismoindustrial@cm-sjm.pt

Visiting days:
Monday afternoon, Tuesday, Wednesday,
Thursday and Friday morning
Closed: August,
Public Holidays and Vacations
(on request)

Number of visitors: Min. 1 - Max. 20
Minimum age: 4+
Duration of the visit: 60 min.
Languages: Portuguese + English + French
Shop: Yes

For more information, please visit:
<https://turismoindustrial.cm-sjm.pt/viarco>



S. JOÃO da MADEIRA

A history of more than 100 years.

Sleep.8

Sleep.8 is a company originated in London. In 2019 it opened its first shop in Portugal, and in just three years, it has already opened more than 36 shops in eight European countries, including Portugal, Spain, the United Kingdom, among others. With production in S. João da Madeira, it operates with innovative technology to achieve a range of excellent products. Each Sleep.8 product is designed and developed with the perfect balance between design and benefits in mind.

In the Sleep.8 collection you'll find innovative mattresses and beds, smart pillows, devices that help improve sleep quality, and adjustable bed bases. They are pioneers in creating the perfect ecosystem for relaxation and sleep, which is why the Sleep.8 product range also includes massage chairs, a large number of massagers, and devices that soothe and help you fall asleep. Take the opportunity to discover the manufacturing secret for a good night's sleep!

INFORMATION ABOUT VISITS

Location:
(Meeting Point)
Rua Oliveira Júnior, 591
3700-204 - S. João da Madeira

Booking:
Required, at least 5 days
in advance (subject to availability)

Booking contacts:
Welcome Centre of Industrial Heritage
of S. João da Madeira
Tel.: +351 256 200 204
Email: turismoindustrial@cm-sjm.pt

Visiting days:
Monday afternoon, Tuesday,
Wednesday and Thursday
Closed: August,
Public Holidays and Vacations
(on request)

Number of visitors: Min. 5 - Max. 25
Minimum age: 12+
Duration of the visit: 45 min.
Languages: Portuguese + English
+ French + Spanish
Shop: No

For more information, please visit:
<https://turismoindustrial.cm-sjm.pt>



S. JOÃO da MADEIRA

Sleep.8 - Because good sleep changes everything.



Grupo Dinamizador
Rede Portuguesa de

**turismo
industrial**



VIANAdoCASTELO

Viana do Castelo is the northernmost Atlantic city in Portugal, with a remarkable quality of life. This is attributed to the tranquillity and safety of its urban life, the richness of its natural, monumental, and historical heritage, as well as the existence of excellent cultural, sports and social facilities. The presence of the river, the hills and the sea bestows upon the city excellent landscape qualities that enchant the senses, create a psychological atmosphere of relaxation, and are conducive to healthy and enjoyable leisure activities. A number of modernised cultural venues - theatres, cinemas, libraries, museums - provide conditions for cultural enrichment for residents and visitors alike. Meanwhile, the presence of the river and the sea offers special conditions for recreational sailing and the practice of all kinds of water sports. The unrivalled richness of Viana's ethnography, which makes the city the capital of Portuguese folklore, the originality and functionality of its craftsmanship, especially

pottery and embroidery, the regular and high-quality cultural entertainment, are other attributes that make Viana do Castelo an extremely attractive city for all types of tourism.

In this context, we highlight the latest trend in tourism - Industrial Heritage. In Viana do Castelo, this goes beyond the appreciation of historical-cultural heritage and identity activities that reflect the dynamics and innovation capacity of national production. It's already a successful venture, as it includes the Gil Eannes Hospital Ship, considered a living symbol of shipbuilding and support for the cod fishing fleet engaged in line fishing, and the Telheiros de Alvarães Kilns, which are still operating and stand out as a distinctive element to showcase the territory and our identity, turning tourist visits into an attractive feature of this region and, consequently, driving micro-economy in support of tourism.

It's good to live in Viana do Castelo!

www.cm-viana-castelo.pt/visitar/turismo-e-lazer/o-que-fazer/turismo-industrial

Almerinda's Mill

This watermill is located in Costeira, on the right bank of the Neiva River, and is owned by the Parish of Alvarães, managed by the local government. Constructed from granite masonry bound with sand mortar, it has a rectangular layout measuring 15.40 meters by 5.80 meters and features a double-pitched roof.

The mill was acquired years ago from the heirs of "Ti" Almerinda, and since then, the Parish Council has carefully overseen its restoration, faithfully maintaining its original design.

Nestled in a paradisiacal setting among oak, willow, and alder trees, the mill has a single wheel powered by water channeled from a small dam roughly 20 meters long and 2 meters wide.

Here, millers received grains to grind, with batches later delivered to customers using a horse-drawn cart.

The mill also served as a sawmill, commonly known as the "Cagaças Mill" after a previous owner and miller. At one time, it had an additional wheel that powered a saw used to cut timber logs.

In the first half of the 20th century, Alvarães relied on the Neiva River's water power, directed through a canal to operate wheels that ground corn and other cereals essential for local sustenance, and ran sawmills—now cherished memories of our historic and cultural heritage.

INFORMATION ABOUT VISITS

Location:
Rua da Azenha, Alvarães
4905-202, Alvarães
GPS: 41° 37' 17"N / 8° 44' 12"W

Visiting Hours:
Friday, 2:00 pm – 4:00 pm - Winter schedule: biweekly
2:00 pm – 4:00 pm - Summer schedule: weekly
Closed on holidays and during vacation periods

Group Visit Bookings:
Minimum 15 days' advance notice required
Contact: (+351) 258.777.483
Email: viladealvaraes@sapo.pt

Group size: min. 5, max. 25 participants
Minimum age: Not applicable
Free of charge
Languages: Portuguese and French
Duration: Free visit – 20 minutes / Guided tour – 35 minutes
Factory Store: No
Additional Facilities:
Wheelchair accessible
Parking for light vehicles and buses
Photography and filming allowed
Picnic area

For further information, visit:
www.alvaraes.pt



VIANAdoCASTELO

Moinho de Maré

Azenhas de D. Prior

The Moinho de Maré, known to locals as Azenhas de D. Prior, is a unique testament to the use of tidal energy. Using a clean, free, and endless energy source, it was likely to have been an operational mill until the 1930s. It all began in 1803 with António Pereira Pinto Araújo, Abbot of Lobrigos and Prior of the Collegiate of Barcelos—hence the name Azenhas de D. Prior. The Prior became interested in the potential created by the lagoon formed by the dam on the Lima River, which filled and emptied according to the rise and fall of the tide. Written references attest to the existence of this tide mill in 1809, which used 8 pairs of millstones, not only to grind various types of grains, but sulphur as well.

In the late 19th century, French businessman Jules Devêze, a Vinho Verde exporter, acquired the tide mill, changed the milling factory and inaugurated a cooperage. According to records from 1904, this was a time of great

modernization for the Azenhas. In this way, over a century of activity related to milling, cooperage, and the skilful exploitation of the rhythm of the tides has been transformed into the cultural and patrimonial heritage of Viana. It is “the only known example of the existence of a hydraulic sawmill associated with a tide mill in Portugal” (Silveira, 2022) and “the only current case of the application of hydraulic turbines to milling in a tide mill” (Custódio, 1989). Today, this peculiar mill and its surrounding lagoon (currently the Urban Ecological Park) play a role related to knowledge, ecology, and sustainability, serving as a testament to 200 years of human history in this tidal marsh area situated on the right bank of the Lima River. The Azenhas de D. Prior are a unique testament to the historical and cultural heritage of Viana do Castelo, as they are a memory of the skilful exploitation of the rhythm of the tides for productive milling and cooperage activity.

INFORMATION ABOUT VISITS

Location:

Rua da Argaçosa, UF de Viana do Castelo (St.ª M.ª Maior e Monserrate) e Meadela, 4900-394 Viana do Castelo, Portugal
41.696779 N -8.818148 W

Visiting Hours:

Tuesday – Saturday 10:00am to 1:00pm
and 2:00pm to 6:00pm
Closed on public holidays.

Group Visit Booking:

At least 5 days in advance
(according to availability)
Centro de Monitorização e Interpretação Ambiental de Viana do Castelo
Antigas Azenhas de D. Prior
Phone: (+351) 258 809 362
Email: cmia@cm-viana-castelo.pt

Number of Visitors:

Minimum age: non-applicable
Free

Languages: Portuguese,
English and Castilian

Duration of the visit: varies

Shop: no

For more information, please visit:

<https://ambiente.cm-viana-castelo.pt/instalacoes/centro-de-monitorizacao-e-interpretacao-ambiental/sala-do-moinho-de-mare>.



VIANAdoCASTELO

Come discover the uniqueness of Viana do Castelo's tide mill!

Gil Eannes Hospital Ship - Museum Ship

The Gil Eannes Hospital Ship, located in Viana do Castelo, is considered a living symbol of shipbuilding and support for the cod fishing fleet engaged in line fishing. It was built in the former shipyards of Viana do Castelo, in 1955, and served for 18 years, playing a crucial role in supporting cod fishermen and white fleet vessels in the seas around Newfoundland and Greenland. In 1984, after concluding its activities, it was docked in the port of Lisbon, where it remained abandoned for 13 years, until it was sold to a scrap dealer for dismantling in 1997. Faced with this inglorious fate, the Viana community rallied to bring it back to its city of origin, rescuing it from the scrapyards. It was towed to Viana on 31 January 1998, and after undergoing extensive restoration work, it was opened to the public as a Museum Ship in August of that same year.

For 25 years, the Gil Eannes has been open to the public as a Museum Ship at the Old Commercial Dock of Viana do Castelo. Over the years, various restoration works have been carried out to allow visitors to 'sail' and discover the different features of the ship, embarking on an experience of historical, cultural and nautical knowledge through visits tailored to various audiences. The Gil Eannes Foundation, a non-profit entity that owns the ship, was established to transform it into a museum, with the aim of contributing to cultural, educational, tourist and scientific development, especially in areas related to the sea, in addition to undertaking various other initiatives to maintain the Gil Eannes Ship as a 'Living Memory of Assistance to Cod Fishing.'

INFORMATION ABOUT VISITS

Location:

Navio Gil Eannes - Doca Comercial
4900-321, Viana do Castelo
GPS: 41°41'24,53"N / 8°49'48,58"W

Visiting Hours

Monday to Sunday
09.30 am to 6.00 pm - winter
09.30 am to 7.00 pm - summer
Closed: 24, 25, 31 December,
and 01 January

Group visit booking:

At least 1 week in advance
(+351) 258.809.710 / 966.442.644
navio@fundacaogileannes.pt
geral@fundacaogileannes.pt

Number of visitors: Min. 10 and max. 25 participants (in group visits)

Minimum age: Individuals under 18 must be accompanied by an adult

Languages:
with audio guide - Portuguese, English, Spanish, French, German
with guide - Portuguese, English, Spanish, French

Duration of the visit:
Free tour - 1h00 / Guided tour - 1h30
Shop: Yes

For more information, please visit:
www.fundacaogileannes.pt



VIANAdoCASTELO



Living Memory of Assistance to Cod Fishing

Route of Ceramics Telheiros Kilns

Alvarães was an agricultural centre of excellence, but many centuries ago it skilfully combined the primary sector of agriculture and livestock with the secondary sector of industry, thanks to the mineral wealth of its subsoil. Our land has combined natural beauty with the morphological constitution of its predominantly clayey subsoil and the white kaolin clay from its immense natural barriers. In addition to being a distinctly agricultural land, it has been important for centuries due to its industries, the main one being ceramics. The roof tiles and bricks produced here have been known and valued over time. It's a source of pride that some of the tiles produced here were used in the Santa Maria da Vitória Monastery or the Batalha Monastery.

In the 'telheiras' (tile factories), Roman tiles of different sizes, and bricks, such as solid and curved bricks, used for bread ovens, were crafted using traditional processes. Clay was extensively mined here for centuries, with historical accounts, confirmed by locals, indicating that 25 kilns were operating in the early 20th century. In the 1950s there were eight functioning kilns, all with well-identified owners. The kilns stopped firing tiles and bricks many years ago and two of them have been rebuilt for the memory of present and future generations.

INFORMATION ABOUT VISITS

Location:
Fornos Telheiros
4905-204 Alvarães
GPS: 41°37'44.23"N/8°44'50.30"W

Visiting Hours:
Friday: 2.00 pm to 4.00 pm
- winter opening hours - Quarterly
2.00 pm to 4.00 pm
- summer opening hours - Weekly
Closed: Public holidays and vacations

Group visit booking:
At least 15 days
in advance
(+351) 258.777.483
viladealvaraes@sapo.pt

Number of visitors: Min. 10 and max. 60
participants (in group visits)
Minimum age: minors accompanied
by an adult.
Languages: With guide - Portuguese
and French
Duration of the visit: Free tour - 1h00
Guided tour - 1h30
Shop: No

For more information, please visit:
www.alvaraes.pt



VIANAdoCASTELO





Grupo Dinamizador
Rede Portuguesa de

**turismo
industrial**



vilaPOUCAdeAGUIAR

Vila Pouca de Aguiar is characterised by unique landscapes and significant historical heritage. IT'S A LAND OF GOLD (Tresminas and Jales), STONE (with significant reserves of certified granite and very ancient schists) and WATER (here flows what is considered by many to be the best naturally carbonated water in the world, in Pedras Salgadas).

The mobile app 'TPNP TOMI Go Vila Pouca de Aguiar' provides visitors to this municipality with free access to all the necessary information, including region maps organised by categories: Where to eat; Where to stay; What to do; Events calendar. All app features can be used offline, so you can enjoy the wonders of this region without any worries.

<https://cm-vpaguiar.pt/visitar/>

Mining Interpretive Centre of Jales

The mining cultural heritage of the Jales territory, particularly manifested in the contemporary mining concession for gold exploration granted to Minas de Jales, Lda., holds a significant value that is reflected in the project to renovate Casa do Guincho do Poço de Santa Bárbara, near the iconic winch or trestle of the last gold mine to operate in Portuguese territory, now transformed into the Mining Interpretive Centre of Jales.

Discover the lives and the people who carried out the mining activity through the physical collection, documents and photographs on display, complemented by audiovisual materials that establish the necessary connection to the spaces and working methods of the mine. Walk through a replica of a mining gallery and travel back to one of the moments of greatest progress experienced in the region.

INFORMATION ABOUT VISITS

Location:
Mining Interpretive Centre of Jales
Caminho Municipal 1172-1,
Campo de Jales
5450-341 Vreia de Jales

Booking:
Recommended

Booking contacts:
Mining Interpretive Centre of Jales
Tel.: +351 259 458 133
Email: cimineirojales@gmail.com

Visiting days:
Summer Opening Hours
(1 Mar. to 30 Nov.):
Tuesday to Sunday
from 10.00 am to 6.00 pm
Summer Opening Hours
(1 Dec. to 28 Feb.):
Tuesday to Sunday
from 10.00 am to 5.00 pm

Duration of the visit: 60 min.
Languages: Portuguese + Spanish
Shop: Yes

For more information, please visit:
www.jf-vreiajales.pt

vilaPOUCAdeAGUIAR



Discover Portugal's last gold mine in Jales.



Tresminas Roman Mining Complex

At Tresminas you can explore one of the largest gold mines from the Roman World, which resulted in a monumental complex formed by open-pit mines and an intriguing network of underground wells and galleries. For nearly eighteen centuries, this mining heritage remained well-preserved, leading to its classification as a Property of Public Interest (1997) and, more recently, the classification of some components of the water supply system to this mining area as a Monument of Public Interest (2012).

Admire the remnants of open-pit mining, explore the underground galleries for ore transport, and observe the adaptation of living organisms to the extreme conditions of the site. Guided tours include a guide, personal accident insurance, and equipment for visiting the underground galleries - cap, helmet and flashlight.

INFORMATION ABOUT VISITS

Location:
Interpretive Centre of Tresminas
Largo do Cruzeiro, s/n
5450-296 Tresminas

Booking: Required and subject to availability

Booking contacts:
Interpretive Centre of Tresminas
Tel.: +351 259 458 091 //
+351 962 406 935
Email: geral@tresminas.com

Visiting days: Summer Opening Hours
(1 Mar. to 30 Nov.):
Tuesday to Sunday
from 10.00 am to 6.00 pm
Summer Opening Hours
(1 Dec. to 28 Feb.):
Tuesday to Sunday
from 10.00 am to 5.00 pm

Duration of the visit: 150 min.
Languages: Portuguese
+ Spanish + English
Shop: Yes

For more information, please visit:
www.tresminas.com

vilaPOUCAdeAGUIAR



Tresminas Roman Mining Complex - Discovering Gold.





Grupo Dinamizador
Rede Portuguesa de

turismo
industrial

P TOURISM
NORTE
O
PORTUGAL
ORIGIN
AND ORIGINAL

Turismo do Porto
e Norte de Portugal, E.R.
Castelo Santiago da Barra
4900-360 Viana do Castelo
www.portoenorte.pt
turismo@portoenorte.pt
tel: +351 258 820 270

tpnp©2024